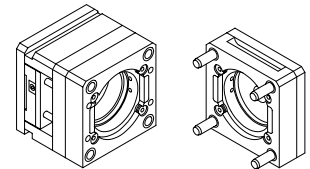
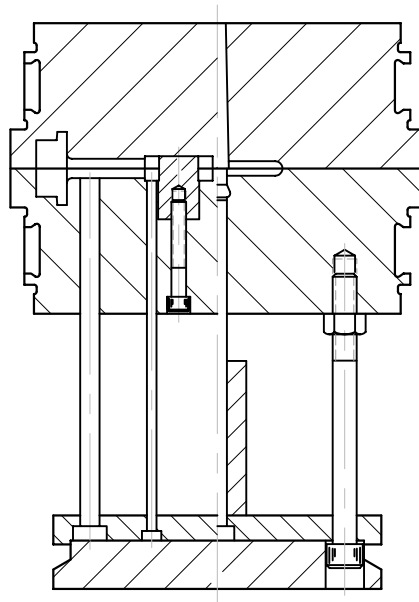
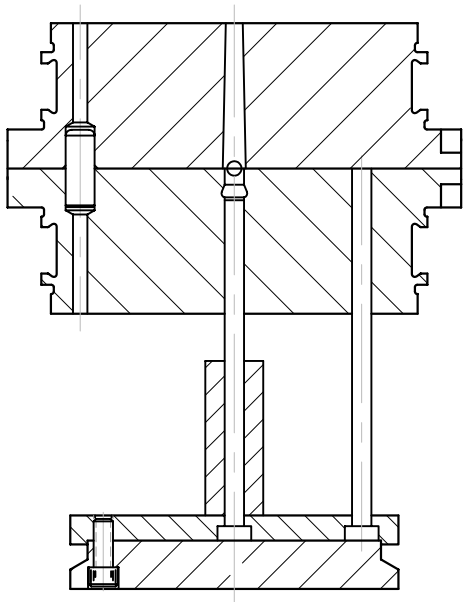


FOR SIMPLE PARTS, CUTTING THE CAVITY DIRECTLY IN THE SOLID INSERT CAN SAVE TIME AND MONEY. P-20, H-13, S-7 AND 420 STAINLESS STEEL ALL WORK WELL FOR THIS.

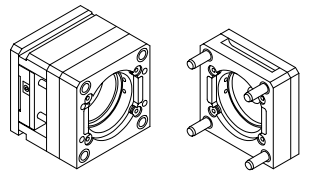
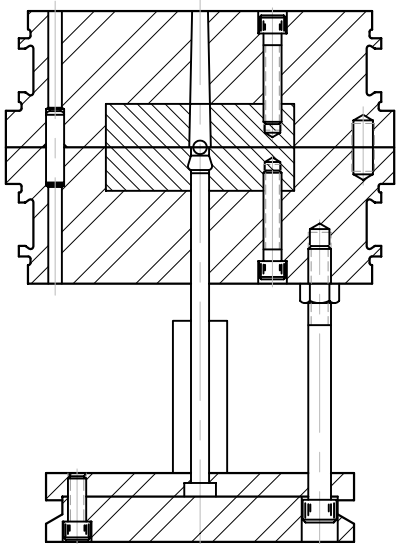
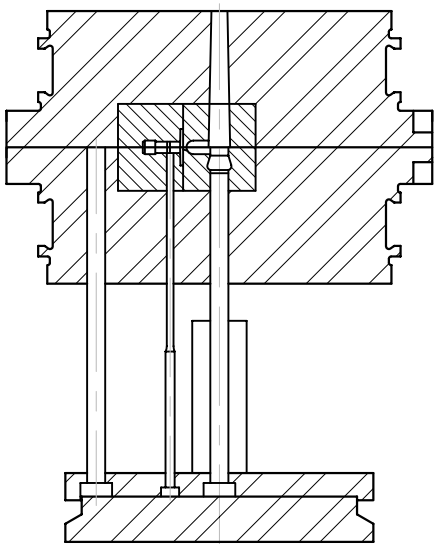
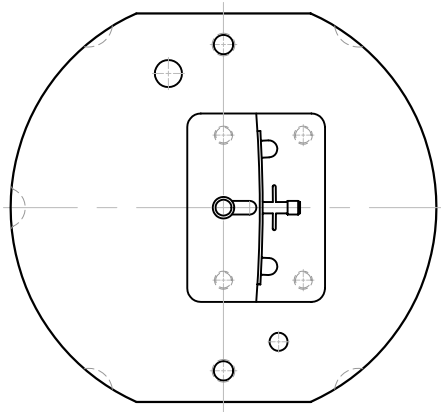
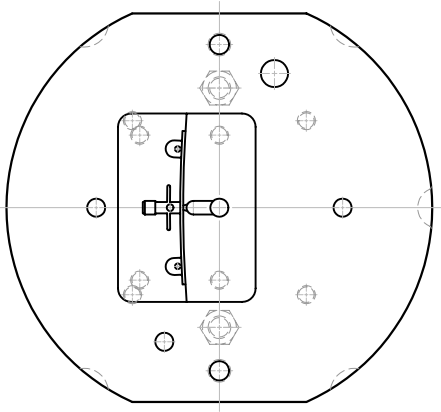


SINGLE-POSITION

COPYRIGHT © PLEASANT PRECISION, INC.®
1991, 1993, 1997, 1998, 1999, 2000 ALL RIGHTS RESERVED

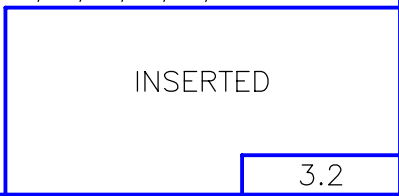
IN SOLID

FOR THE MORE COMPLEX PARTS, INSERTING THE CAVITY AREA MAY MAKE THE CAVITY EASIER TO FORM. ALSO SAFER IF DELICATE AREAS NEED MACHINED OR REPAIRED.



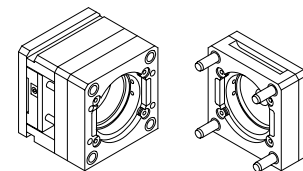
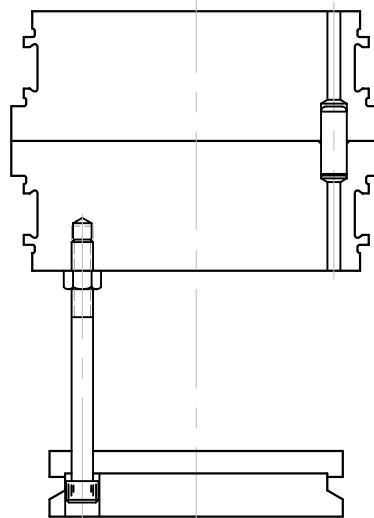
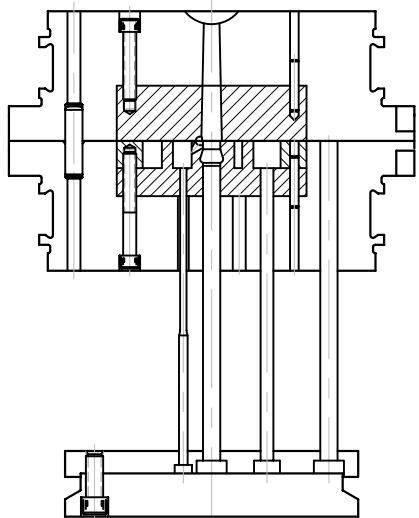
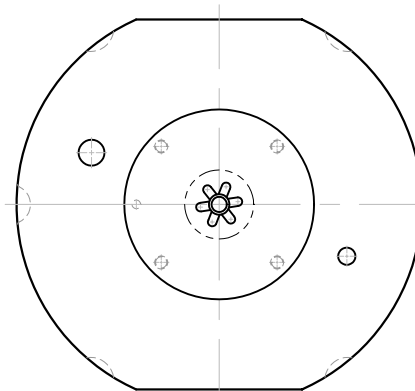
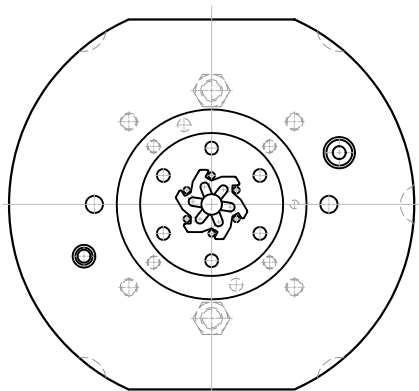
SINGLE-POSITION

COPYRIGHT © PLEASANT PRECISION, INC.®
1991, 1993, 1997, 1998, 1999, 2000 ALL RIGHTS RESERVED



INSERTED

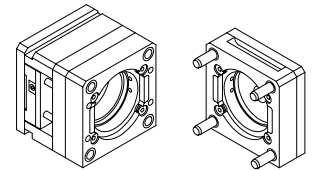
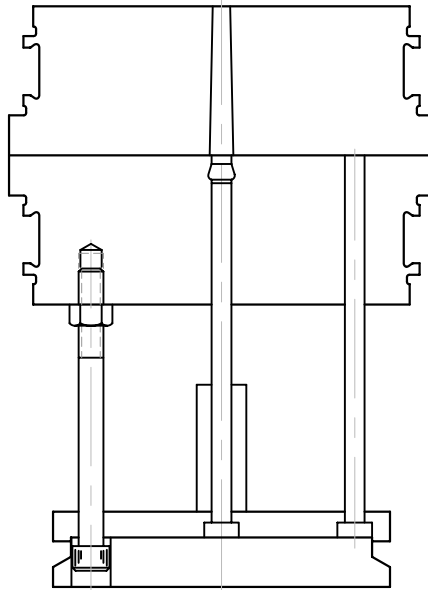
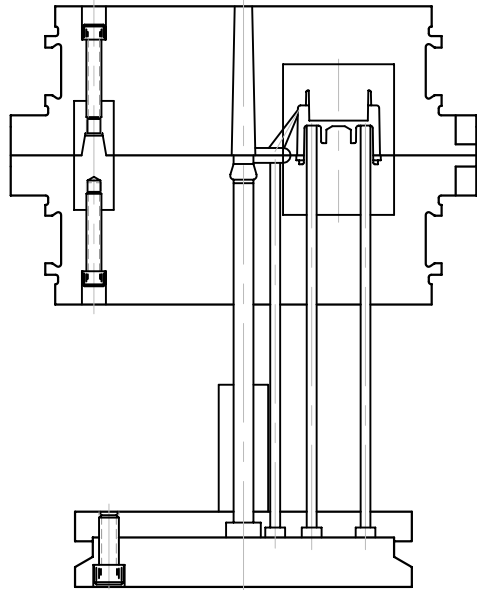
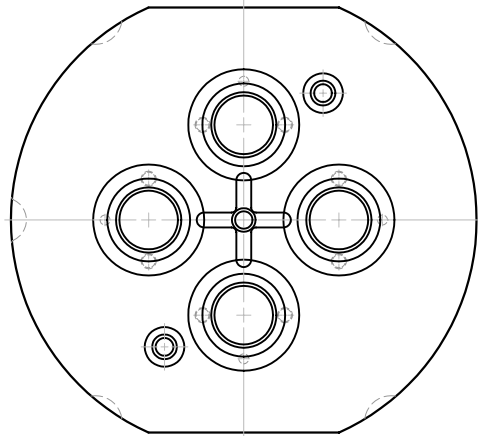
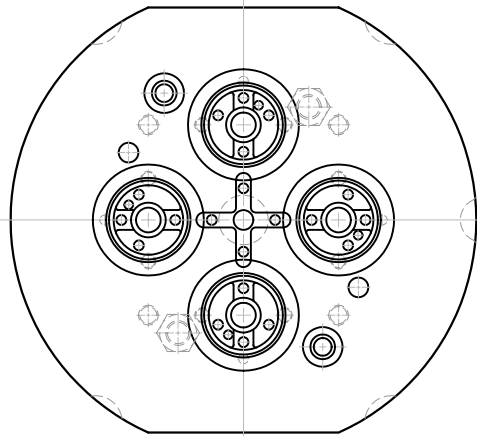
CENTER GATING, AS WITH THIS GEAR MOLD, IS MORE ACCURATE AND SIMPLIFIES THE WORK. THIS CAVITY POCKET WAS SIMPLE LATHE WORK.



SINGLE-POSITION

COPYRIGHT © PLEASANT PRECISION, INC.®
1991, 1993, 1997, 1998, 1999, 2000 ALL RIGHTS RESERVED

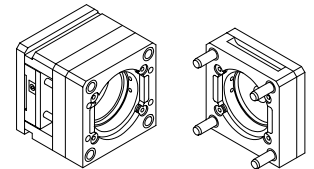
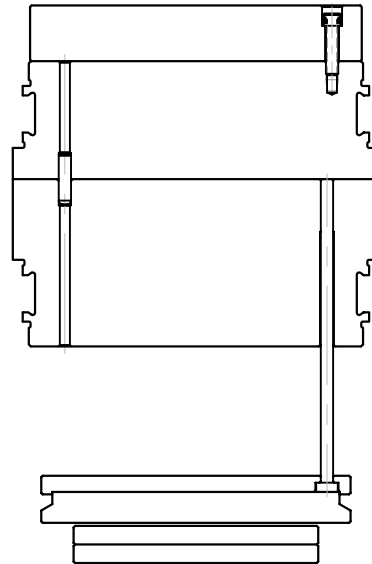
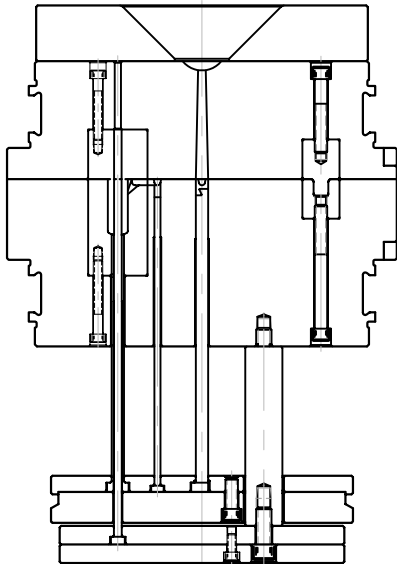
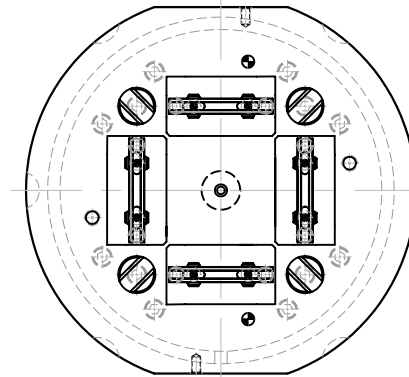
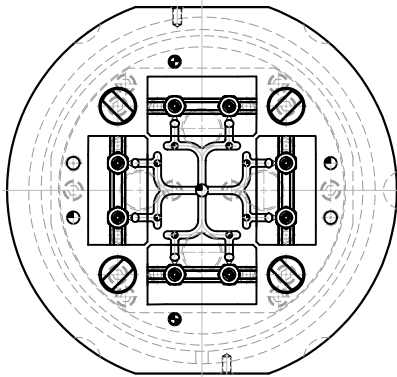
CENTERED



SINGLE-POSITION

COPYRIGHT © PLEASANT PRECISION, INC.®
1991, 1993, 1997, 1998, 1999, 2000 ALL RIGHTS RESERVED

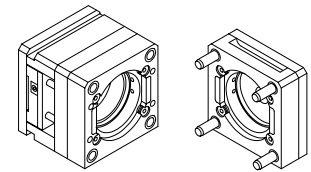
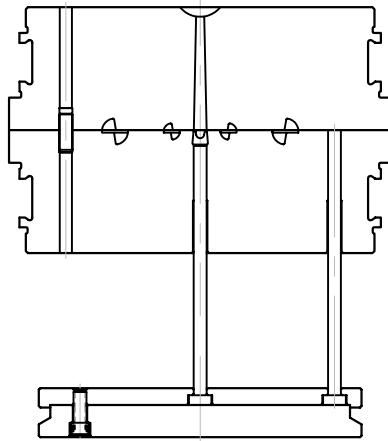
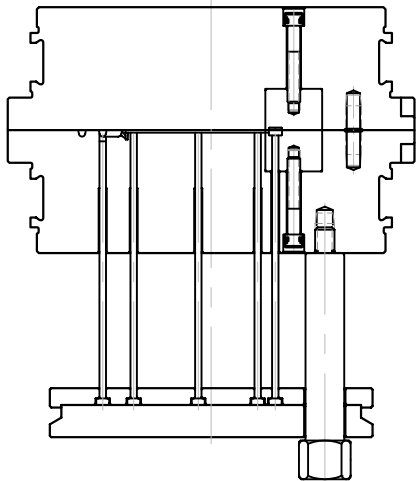
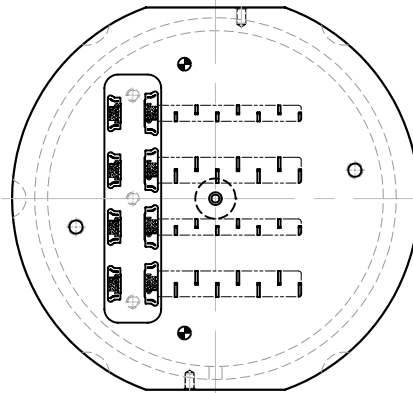
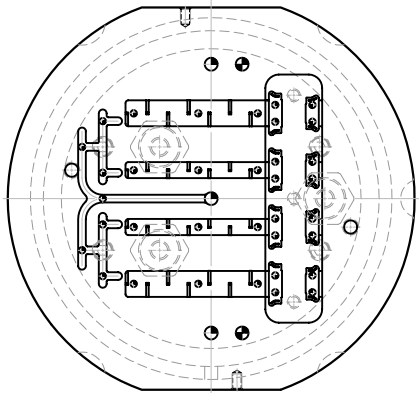
MULTI-CAVITY



SINGLE-POSITION

COPYRIGHT © PLEASANT PRECISION, INC.®
1991, 1993, 1997, 1998, 1999, 2000 ALL RIGHTS RESERVED

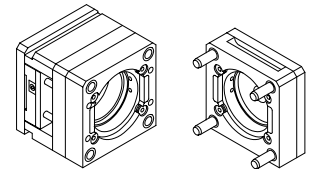
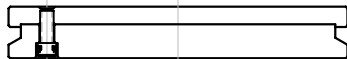
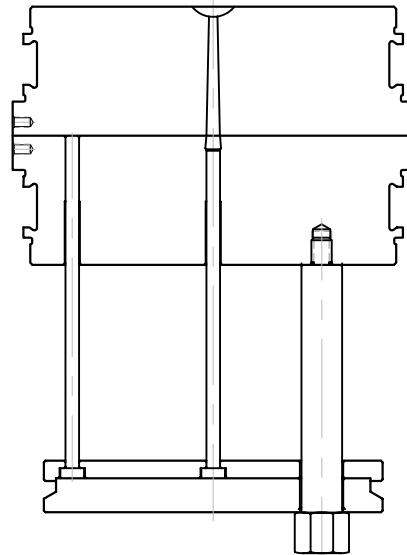
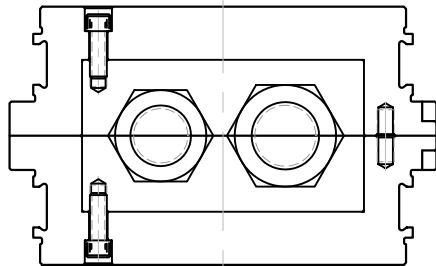
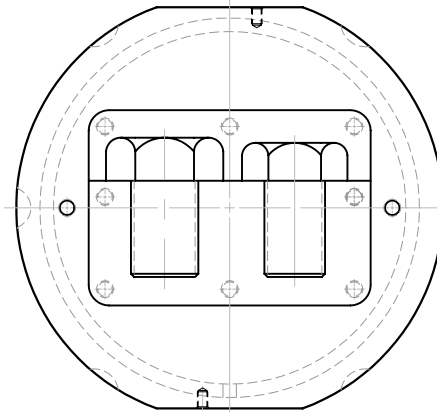
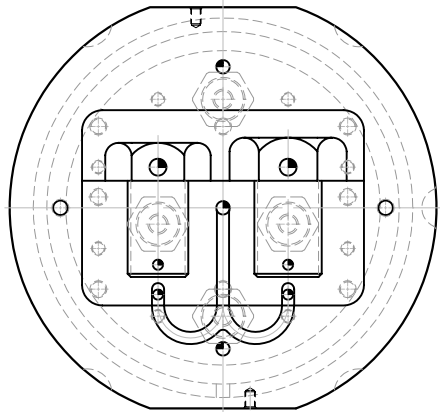
MULTI-CAVITY



SINGLE-POSITION

COPYRIGHT © PLEASANT PRECISION, INC.®
1991, 1993, 1997, 1998, 1999, 2000 ALL RIGHTS RESERVED

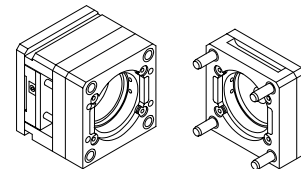
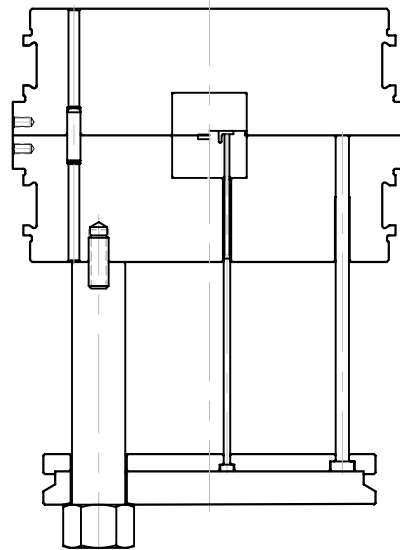
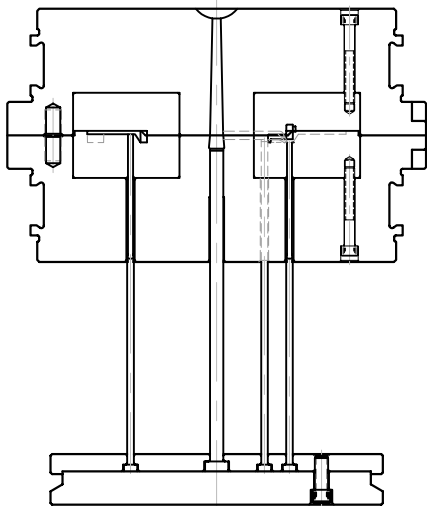
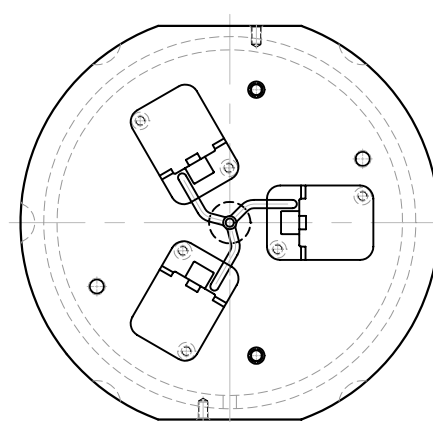
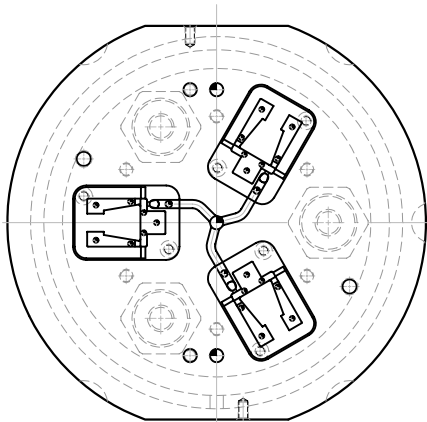
MULTI-CAVITY



SINGLE-POSITION

COPYRIGHT © PLEASANT PRECISION, INC.®
1991, 1993, 1997, 1998, 1999, 2000 ALL RIGHTS RESERVED

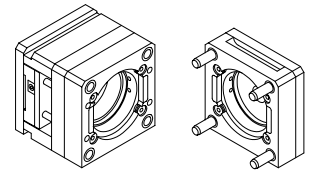
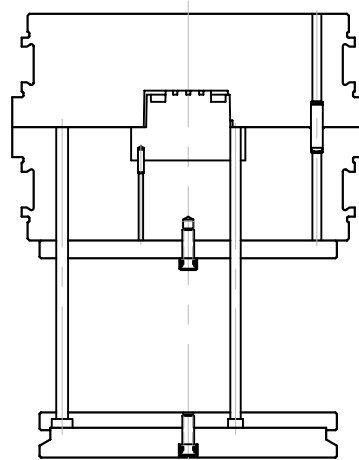
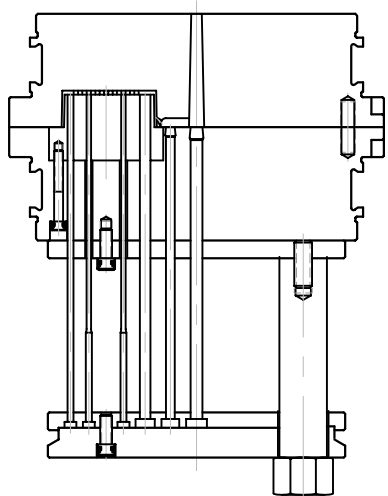
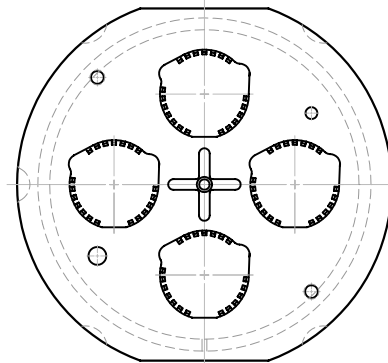
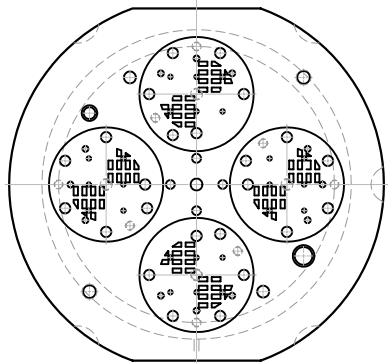
MULTI-CAVITY



SINGLE-POSITION

COPYRIGHT © PLEASANT PRECISION, INC.®
1991, 1993, 1997, 1998, 1999, 2000 ALL RIGHTS RESERVED

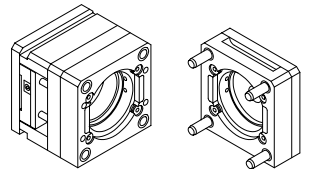
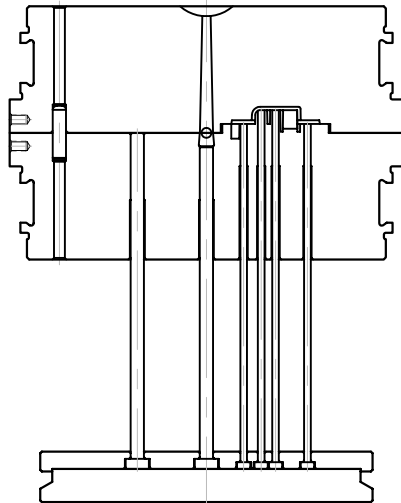
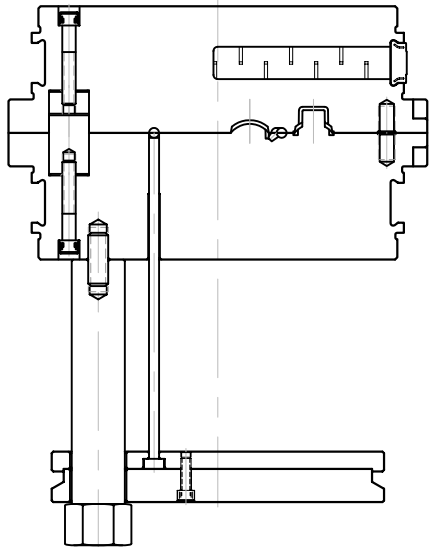
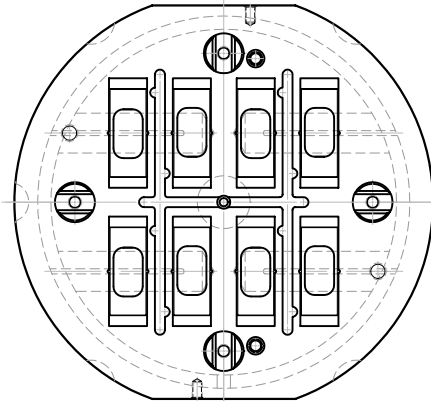
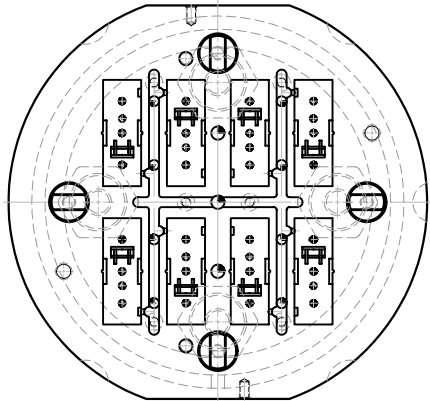
MULTI-CAVITY



SINGLE-POSITION

COPYRIGHT © PLEASANT PRECISION, INC.®
1991, 1993, 1997, 1998, 1999, 2000 ALL RIGHTS RESERVED

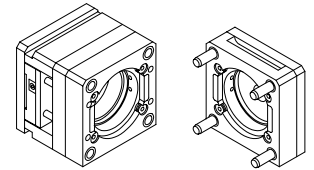
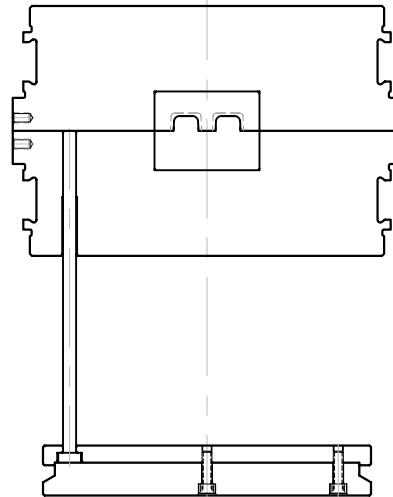
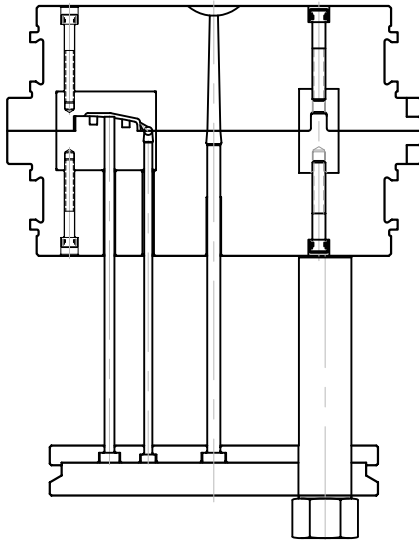
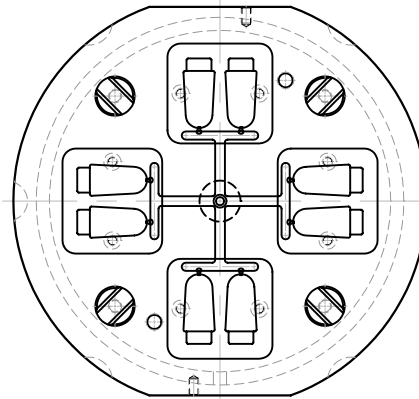
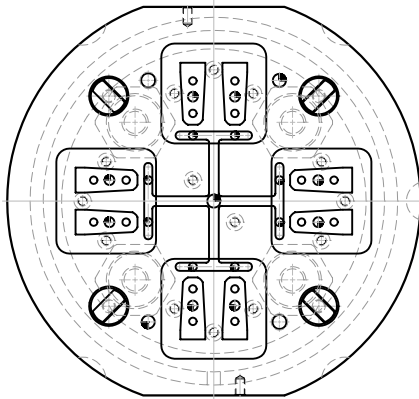
MULTI-CAVITY



SINGLE-POSITION

COPYRIGHT © PLEASANT PRECISION, INC.®
1991, 1993, 1997, 1998, 1999, 2000 ALL RIGHTS RESERVED

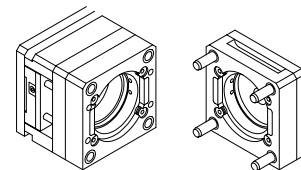
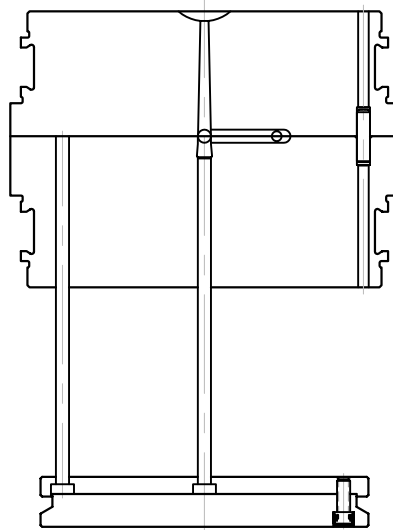
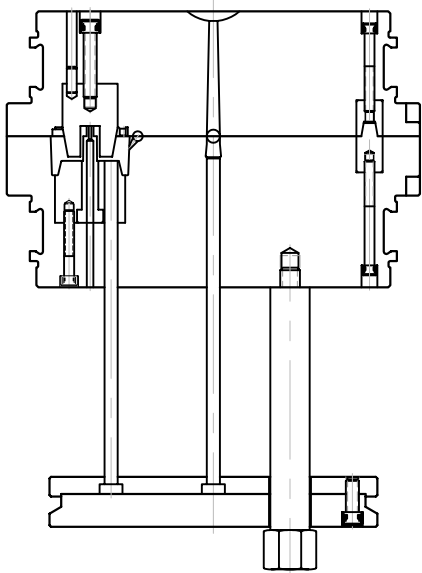
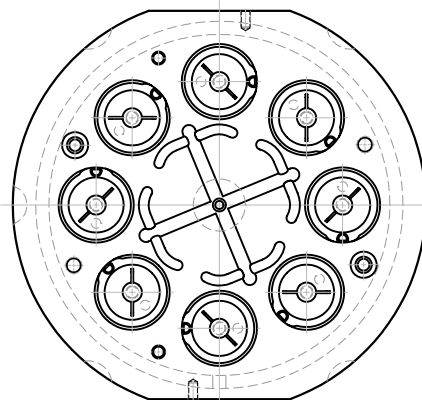
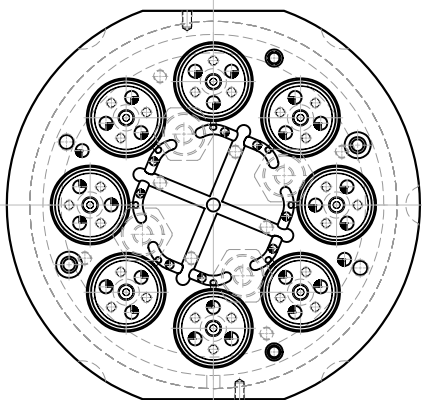
MULTI-CAVITY



SINGLE-POSITION

COPYRIGHT © PLEASANT PRECISION, INC.®
1991, 1993, 1997, 1998, 1999, 2000 ALL RIGHTS RESERVED

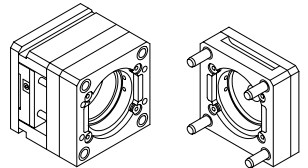
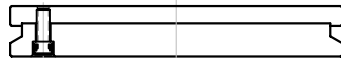
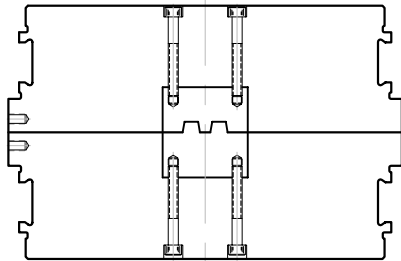
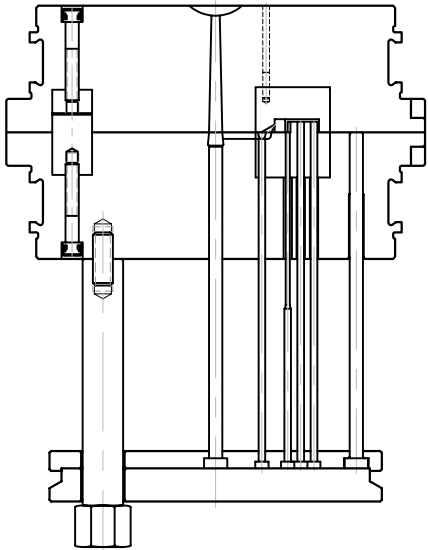
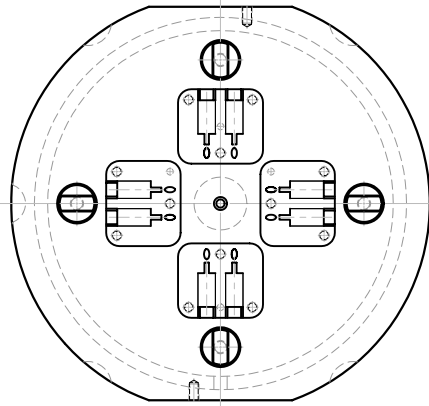
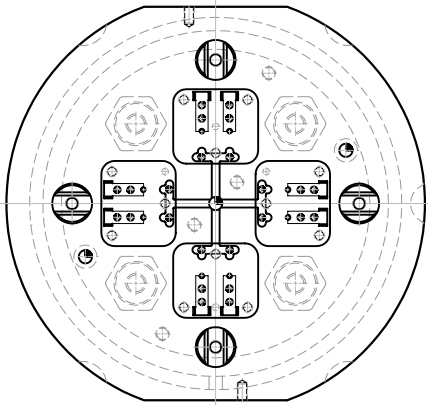
MULTI-CAVITY



SINGLE-POSITION

COPYRIGHT © PLEASANT PRECISION, INC.®
1991, 1993, 1997, 1998, 1999, 2000 ALL RIGHTS RESERVED

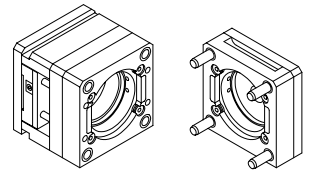
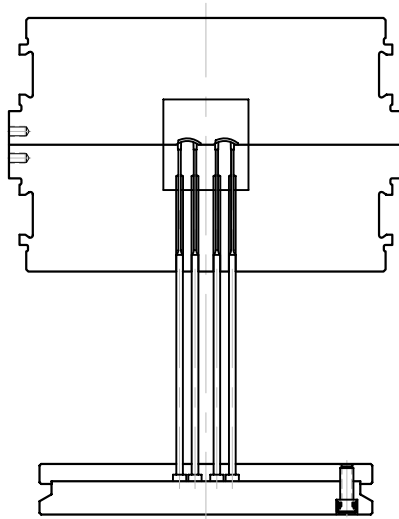
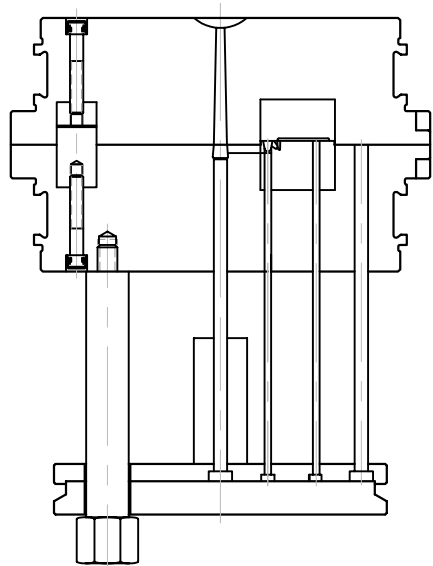
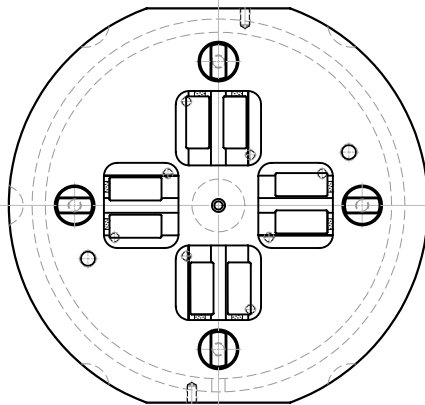
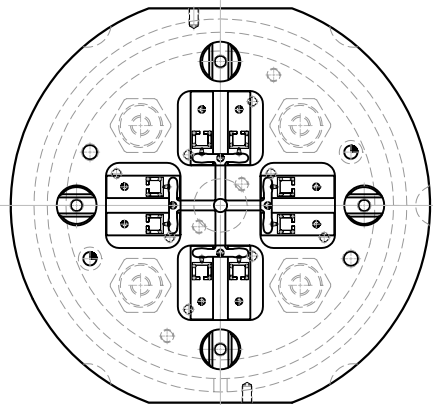
MULTI-CAVITY



SINGLE-POSITION

COPYRIGHT © PLEASANT PRECISION, INC.®
1991, 1993, 1997, 1998, 1999, 2000 ALL RIGHTS RESERVED

MULTI-CAVITY

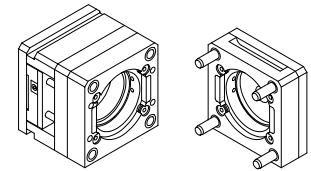
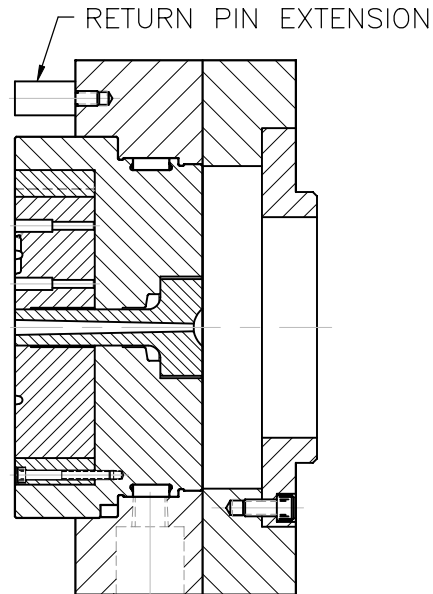
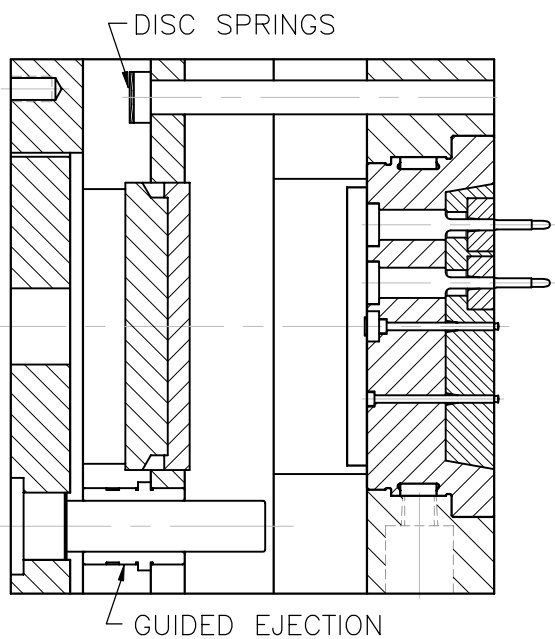


SINGLE-POSITION

COPYRIGHT © PLEASANT PRECISION, INC.®
1991, 1993, 1997, 1998, 1999, 2000 ALL RIGHTS RESERVED

MULTI-CAVITY

THE NEED TO EXTEND THE PARTING LINE TO ACCOMMODATE A TALL PART, CAN BE DONE BY USING A STANDARD EXTRA STOCK INSERT AND RETURN PIN EXTENSIONS.

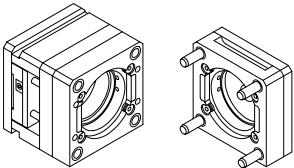
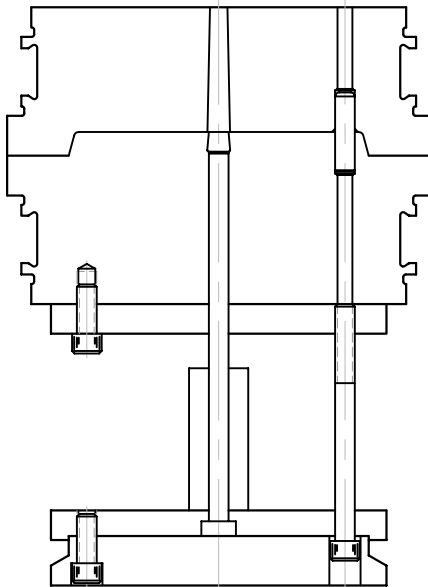
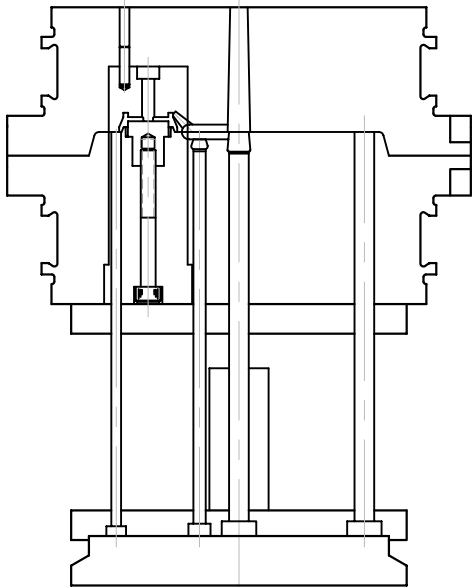
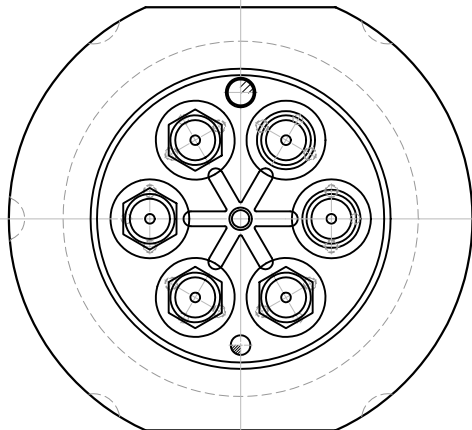
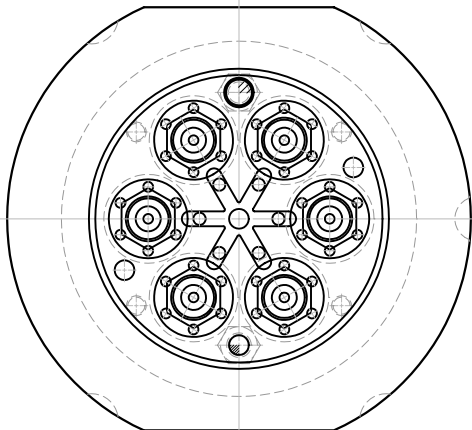


SINGLE-POSITION

COPYRIGHT © PLEASANT PRECISION, INC.®
1991, 1993, 1997, 1998, 1999, 2000 ALL RIGHTS RESERVED

EXTENDED
PARTING LINE

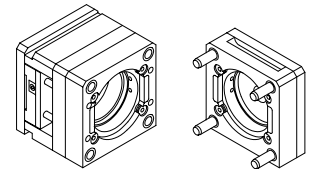
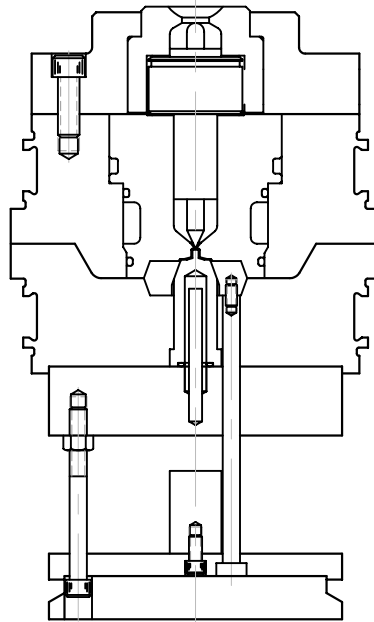
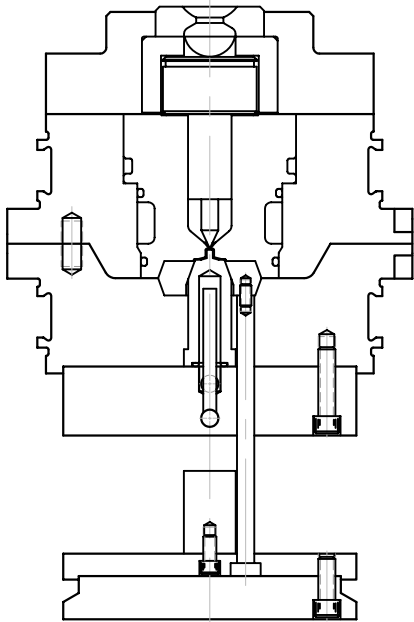
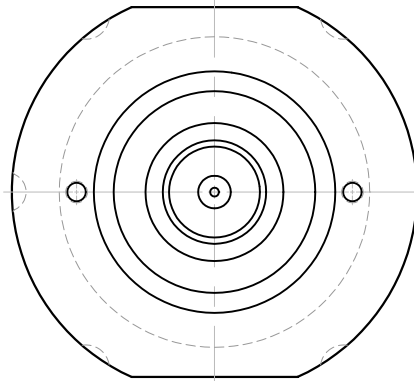
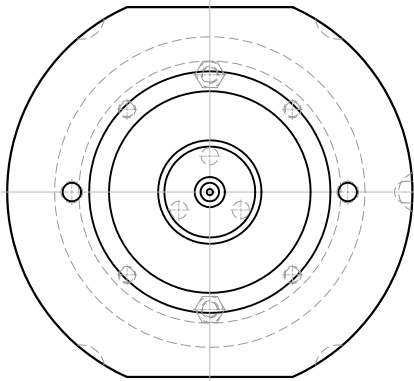
USE A STANDARD, EXTRA STOCK, ROUND MATE INSERT TO TURN A LARGE INTERLOCKING TAPER DIRECTLY INTO THE FACE OF THE MOLD TO OBTAIN EXCELLENT REGISTRATION.



SINGLE-POSITION

COPYRIGHT © PLEASANT PRECISION, INC.®
1991, 1993, 1997, 1998, 1999, 2000 ALL RIGHTS RESERVED

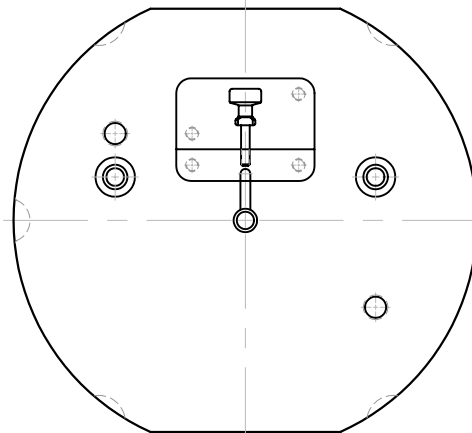
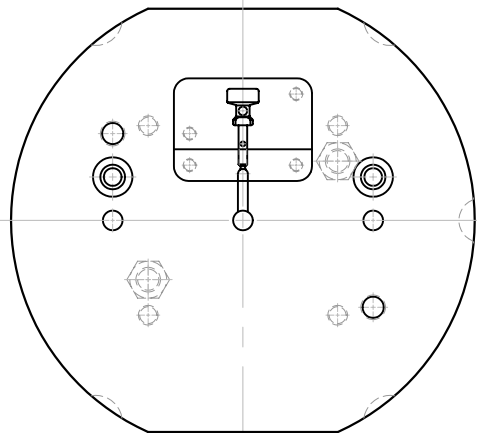
INTERLOCKED
PARTING LINE



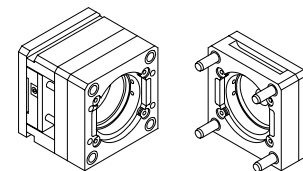
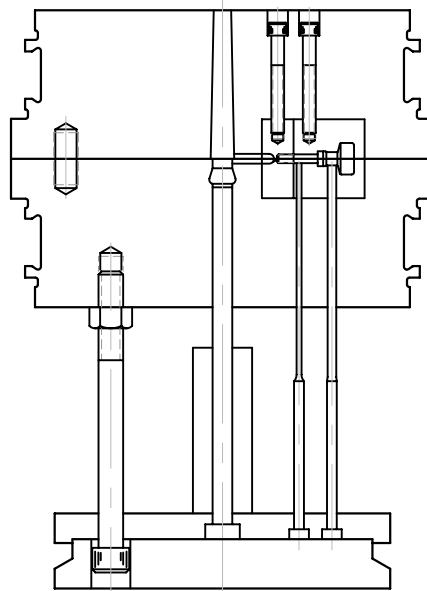
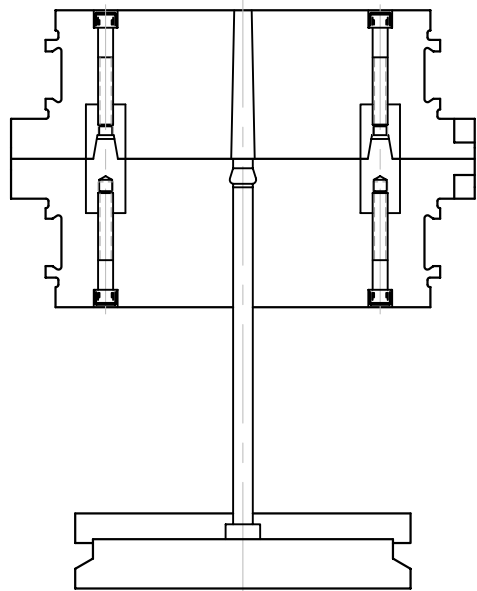
SINGLE-POSITION

COPYRIGHT © PLEASANT PRECISION, INC.®
1991, 1993, 1997, 1998, 1999, 2000 ALL RIGHTS RESERVED

INTERLOCKED PARTING
LINE AND CAVITY
INSERT



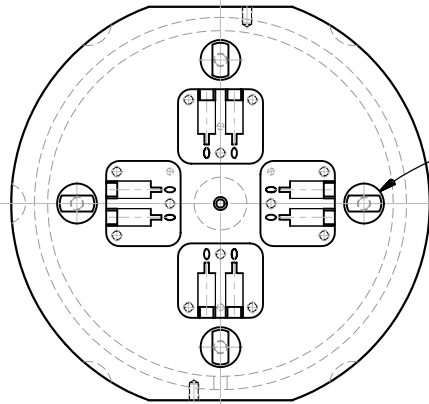
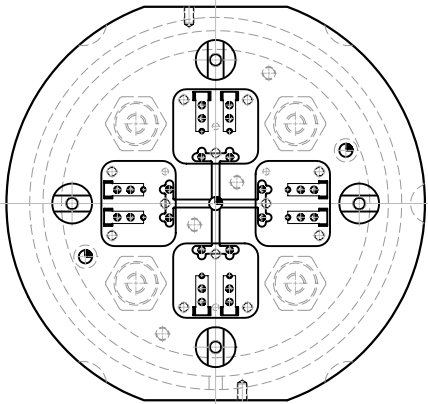
TAPERED INTERLOCKS CAN
BE USED DIRECTLY IN THE
ROUND MATE[®] INSERT GIVING
YOU EVEN BETTER
REGISTRATION THAN IN
THE MOLD BASE ALONE.



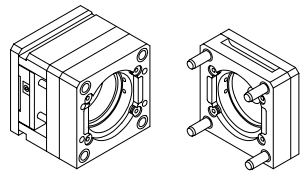
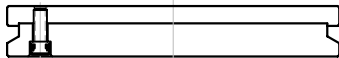
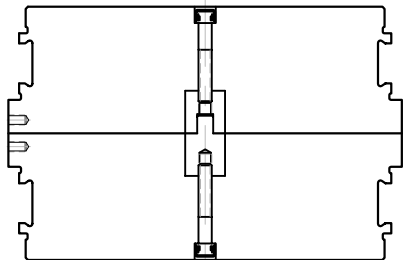
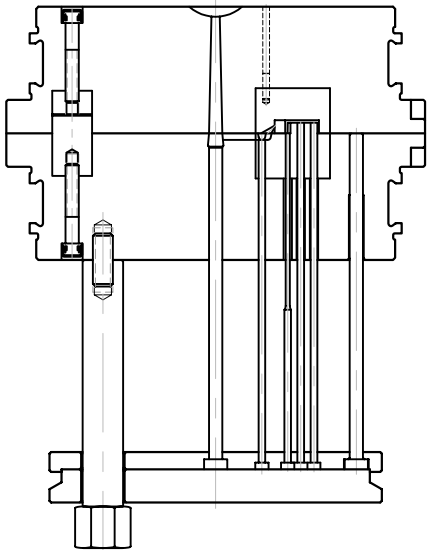
SINGLE-POSITION

COPYRIGHT © PLEASANT PRECISION, INC.®
1991, 1993, 1997, 1998, 1999, 2000 ALL RIGHTS RESERVED

PARTING LINE
INTERLOCKS, TAPERED



CAT# RMC-0105

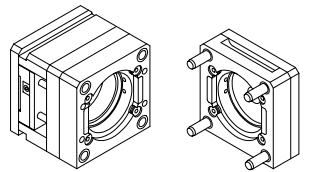
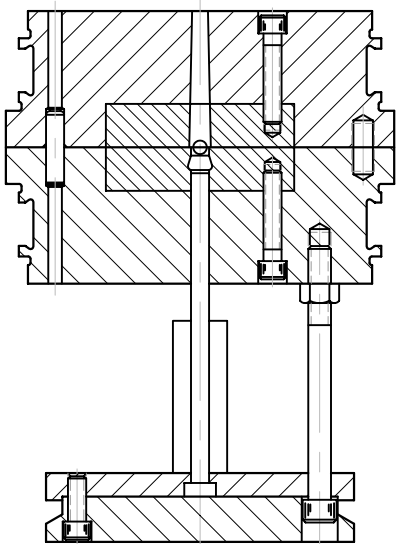
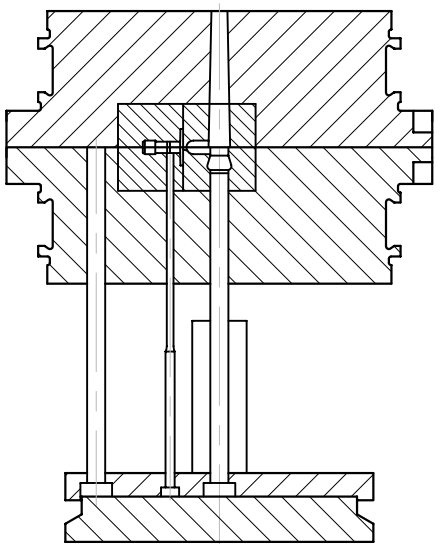
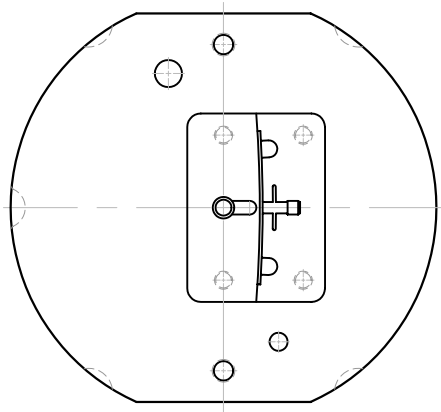
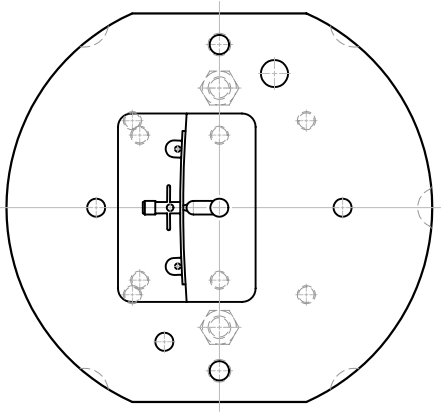


SINGLE-POSITION

COPYRIGHT © PLEASANT PRECISION, INC.®
1991, 1993, 1997, 1998, 1999, 2000 ALL RIGHTS RESERVED

PARTING LINE
INTERLOCKS, STRAIGHT

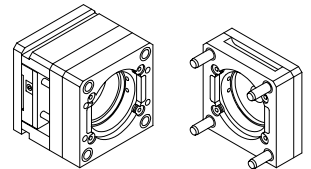
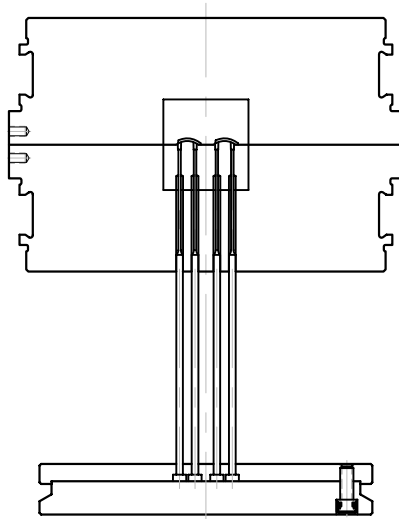
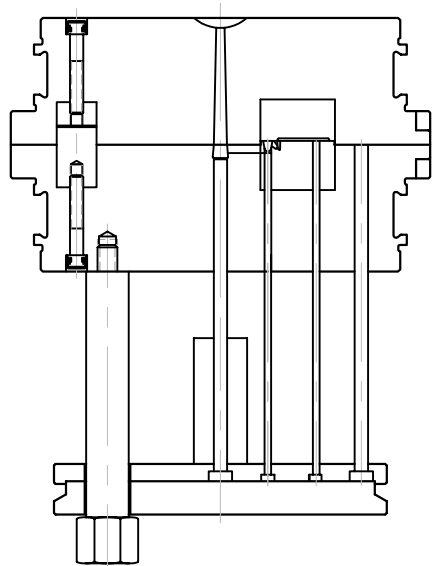
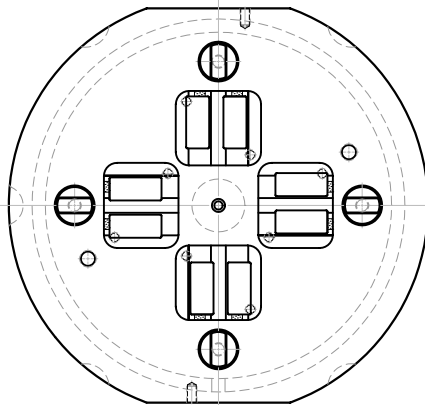
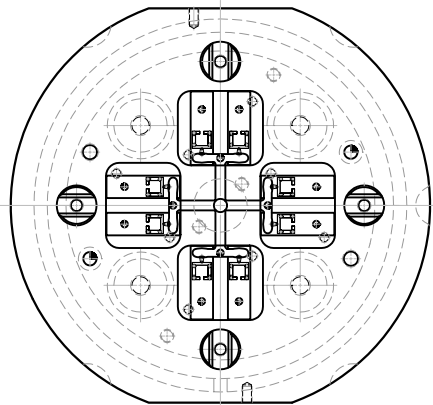
FOR THE MORE COMPLEX PARTS, INSERTING THE CAVITY AREA MAY MAKE THE CAVITY EASIER TO FORM. ALSO SAFER IF DELICATE AREAS NEED MACHINED OR REPAIRED.



SINGLE-POSITION

COPYRIGHT © PLEASANT PRECISION, INC.®
1991, 1993, 1997, 1998, 1999, 2000 ALL RIGHTS RESERVED

INSERTED



SINGLE-POSITION

COPYRIGHT © PLEASANT PRECISION, INC.®
1991, 1993, 1997, 1998, 1999, 2000 ALL RIGHTS RESERVED

MULTI-CAVITY