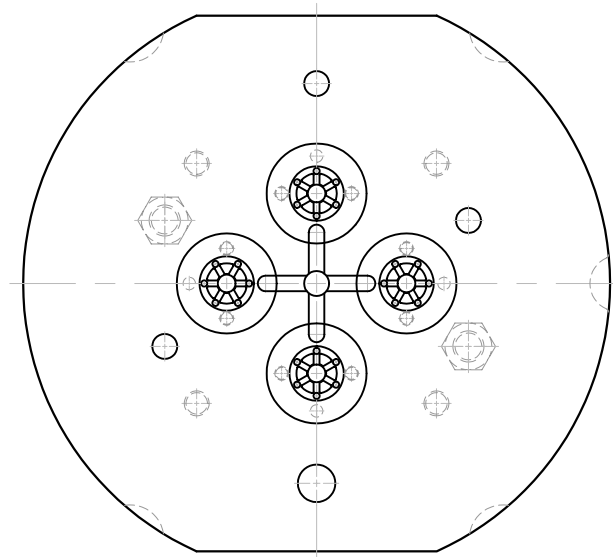
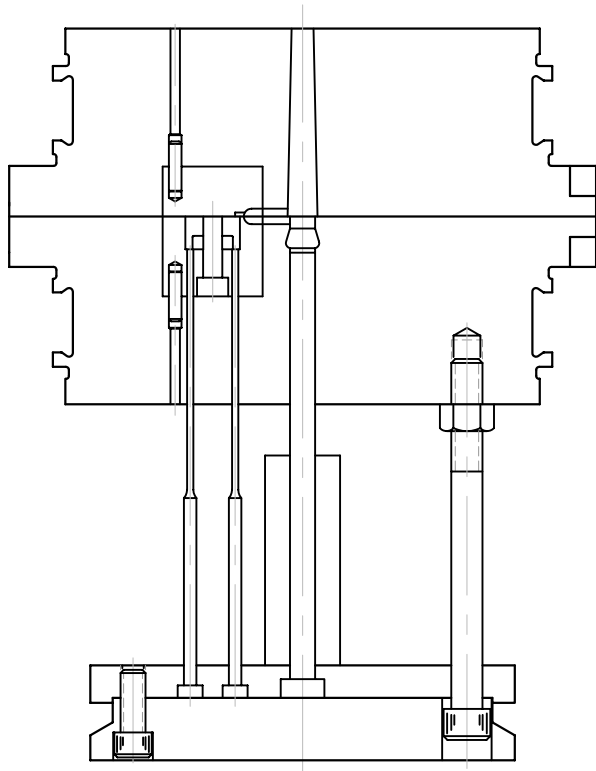


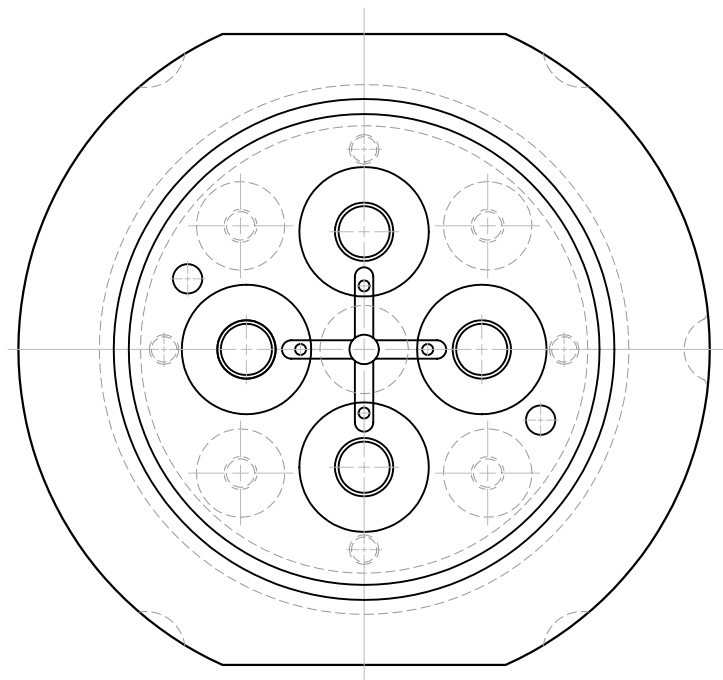
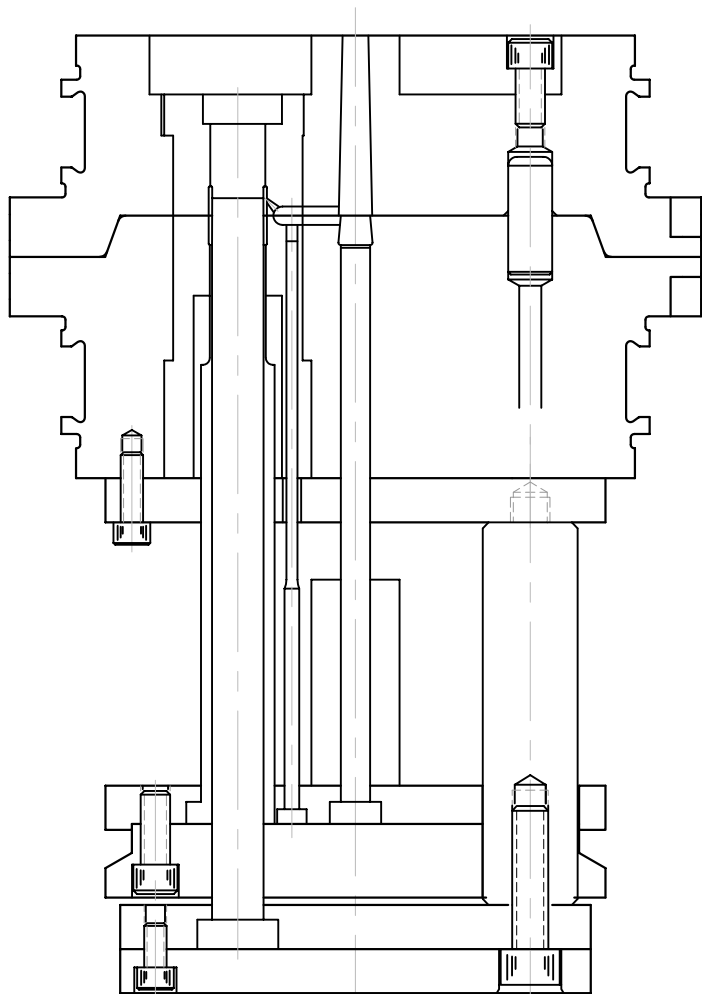
PIN EJECTION IS HANDLED  
IN THE ROUND MATE<sup>®</sup> JUST  
AS ANY STANDARD MOLD.



COPYRIGHT © PLEASANT PRECISION, INC.®  
1991, 1993, 1997, 1998, 1999, 2000 ALL RIGHTS RESERVED

PIN

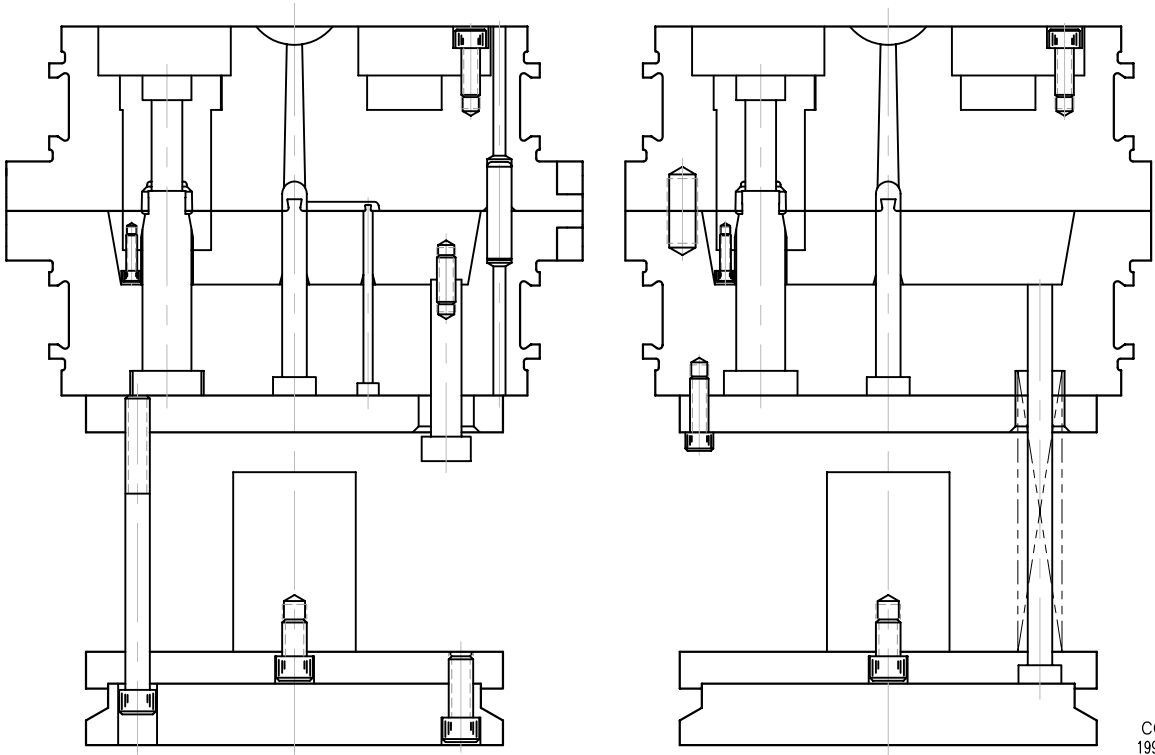
ACCURATE AND EASY TO HANDLE,  
SLEEVE EJECTION IS ACCOMPLISHED  
BY ADDING OPTIONAL CORE  
RETAINER PLATES.



COPYRIGHT © PLEASANT PRECISION, INC.®  
1991, 1993, 1997, 1998, 1999, 2000 ALL RIGHTS RESERVED

SLEEVE

STRIPPER PLATE EJECTION IS EASILY ACCOMPLISHED BY INSTALLING A TAPERED DISC WHICH IS OPERATED BY THE EJECTOR PLATE. THE SAME FEATURE COULD BE SPRING LOADED AND INSTALLED IN THE COVER.

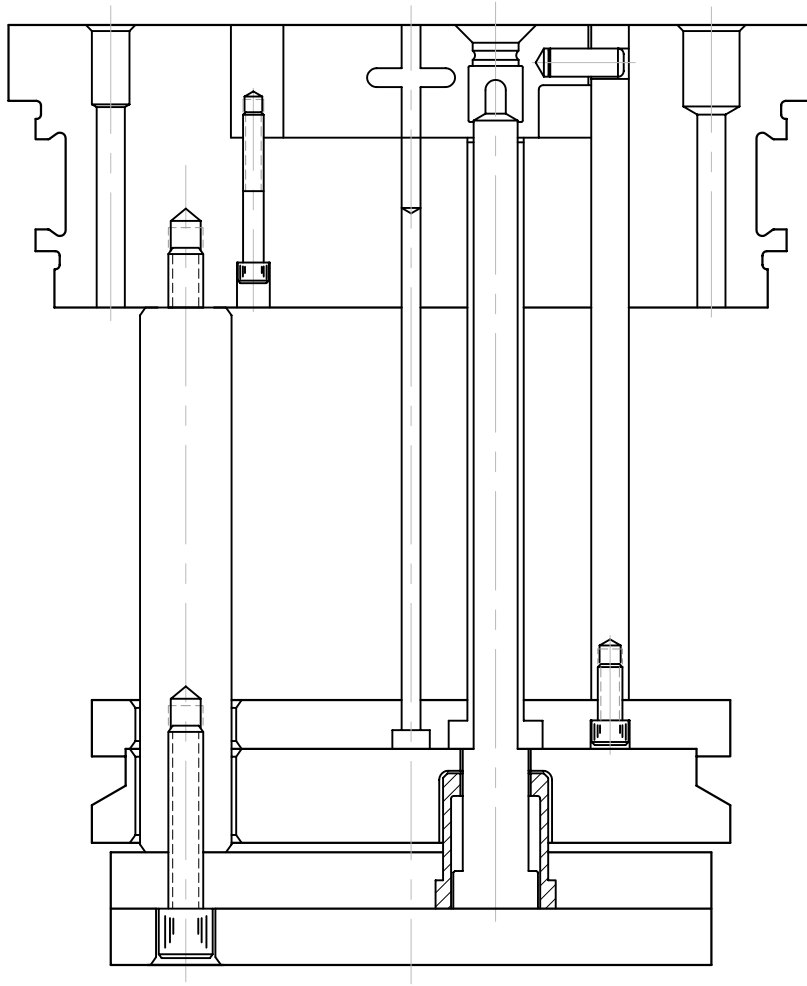


COPYRIGHT © PLEASANT PRECISION, INC.®  
1991, 1993, 1997, 1998, 1999, 2000 ALL RIGHTS RESERVED

STRIPPER DISC

7.3

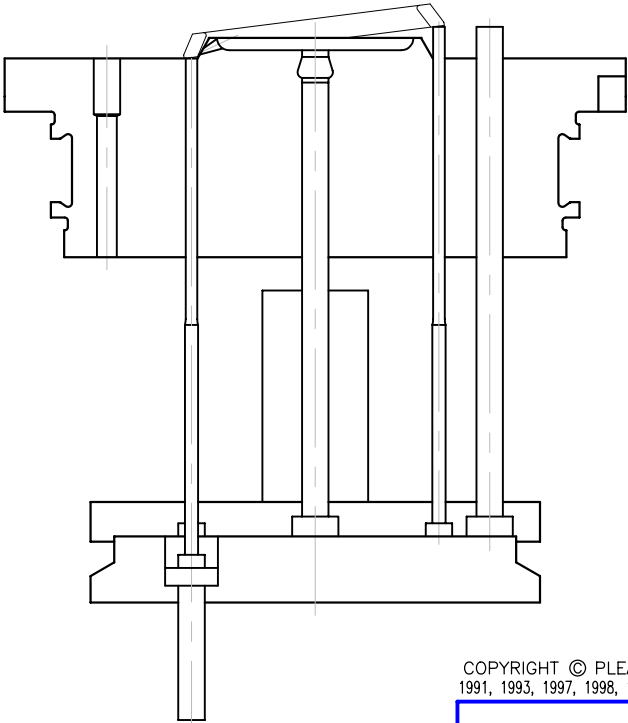
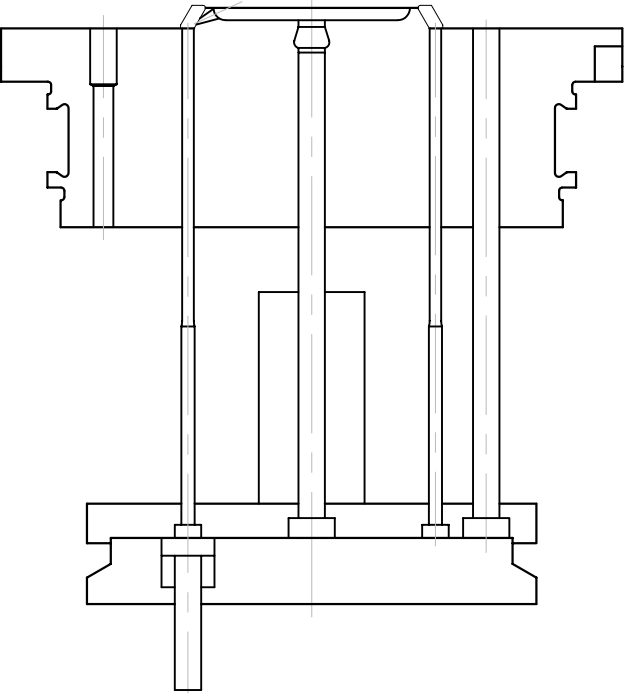
FLOATING CORES CAN BE USED  
TO HELP RELEASE UNDERCUTS  
OR KEEP THE PART CENTERED  
WHILE OPERATING LIFTERS.



COPYRIGHT © PLEASANT PRECISION, INC.®  
1991, 1993, 1997, 1998, 1999, 2000 ALL RIGHTS RESERVED

FLOATING CORE  
WITH RETURN

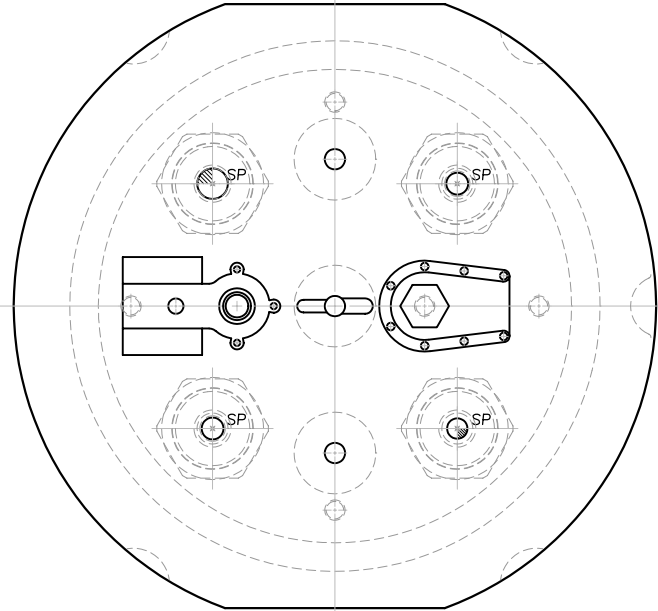
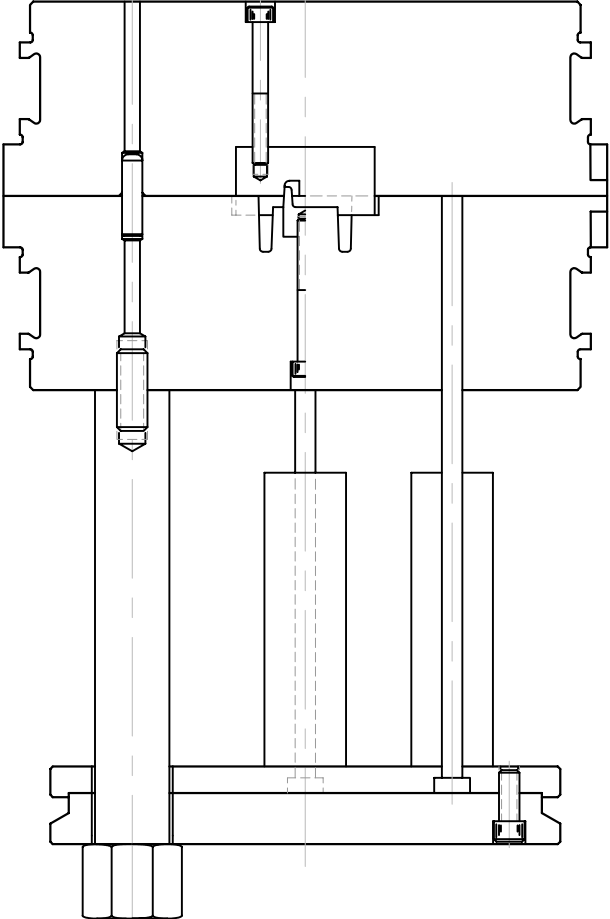
DELAYING ONE OR MORE  
PINS, DURING EJECTION,  
CAN BE EASILY ACCOMPLISHED.



COPYRIGHT © PLEASANT PRECISION, INC.®  
1991, 1993, 1997, 1998, 1999, 2000. ALL RIGHTS RESERVED

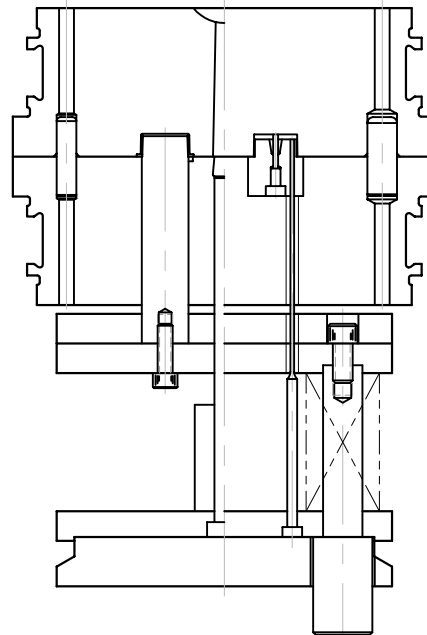
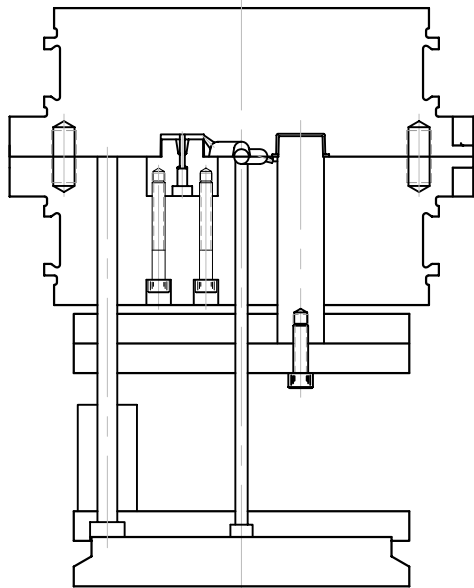
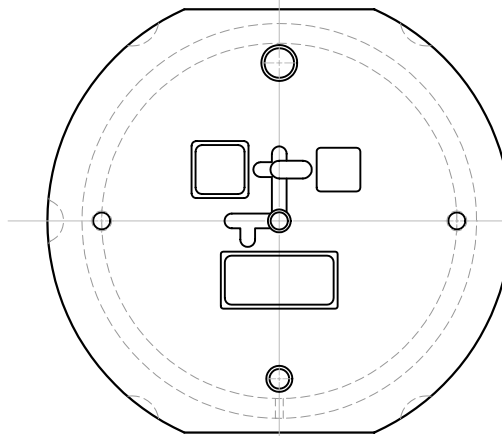
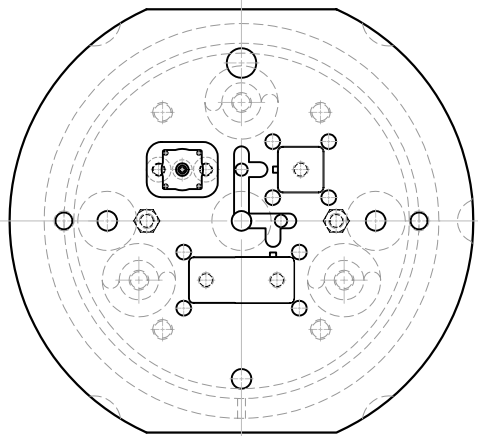
DELAYED PIN

ADDITIONAL SUPPORT MAY  
BE NEEDED, UNDER THE  
CAVITY INSERT, WHEN  
BUILDING AN 8" ROUND MATE.®



COPYRIGHT © PLEASANT PRECISION, INC.®  
1991, 1993, 1997, 1998, 1999, 2000 ALL RIGHTS RESERVED

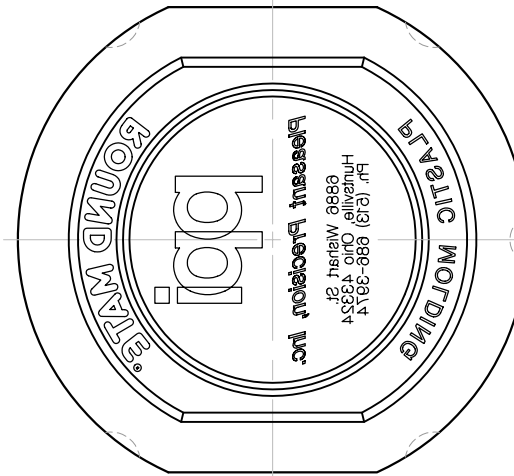
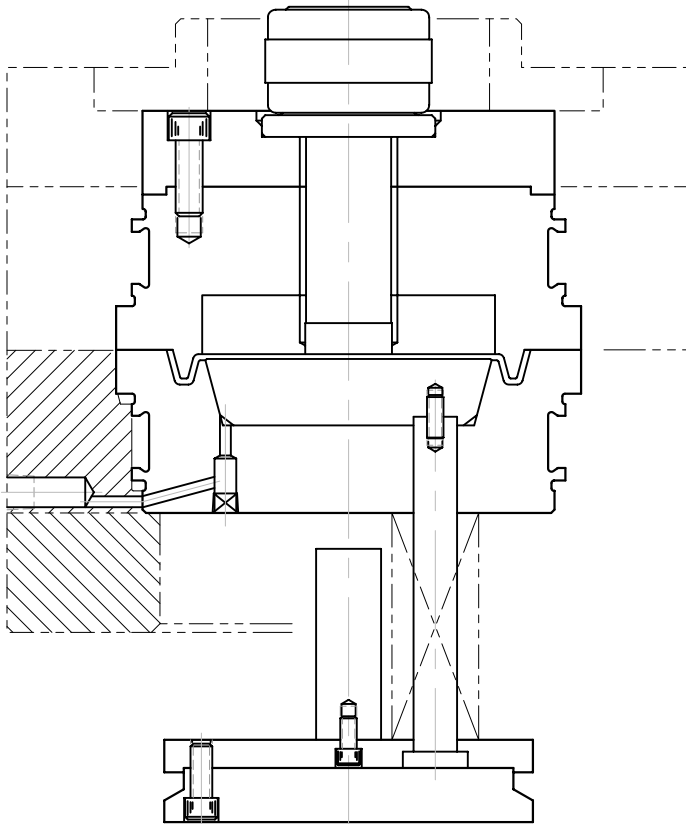
SUPPORT PILLAR  
EJECTOR RETAINER



COPYRIGHT © PLEASANT PRECISION, INC.®  
1991, 1993, 1997, 1998, 1999, 2000 ALL RIGHTS RESERVED

## ACCELERATED CORE EJECTION

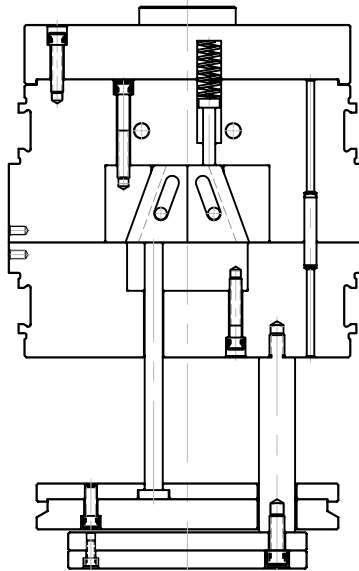
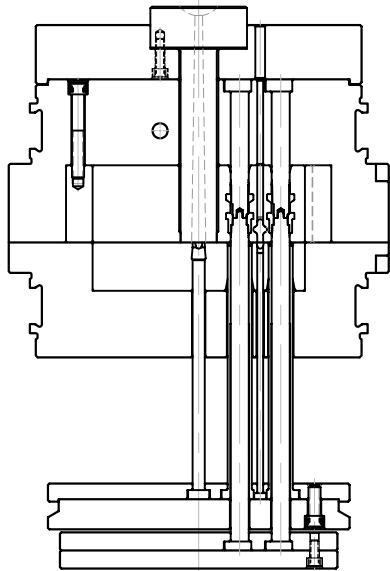
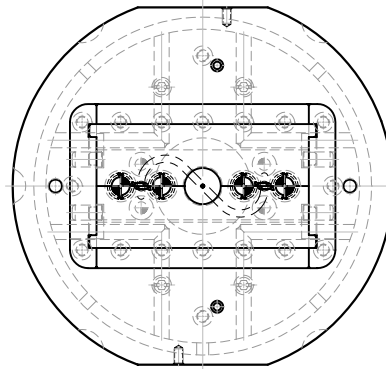
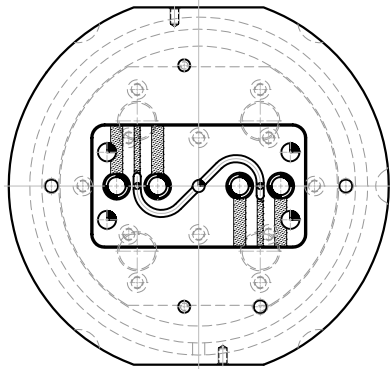
AIR ASSISTANCE IS A  
STANDARD FEATURE BUILT  
INTO ALL 6" AND 8" SINGLE  
POSITION MASTER FRAMES.



COPYRIGHT © PLEASANT PRECISION, INC.®  
1991, 1993, 1997, 1998, 1999, 2000 ALL RIGHTS RESERVED

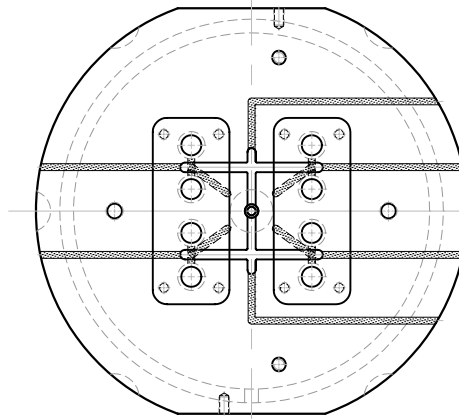
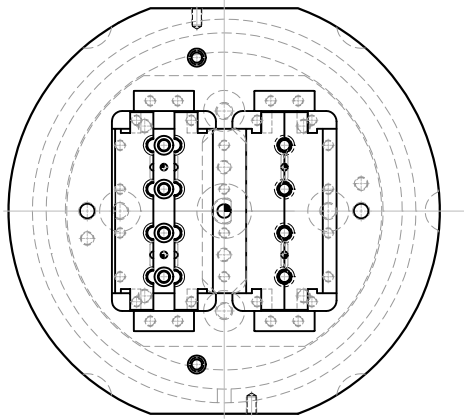
STRIPPER DISC  
WITH AIR



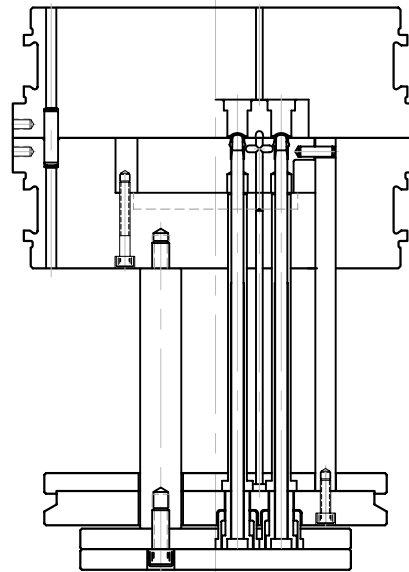
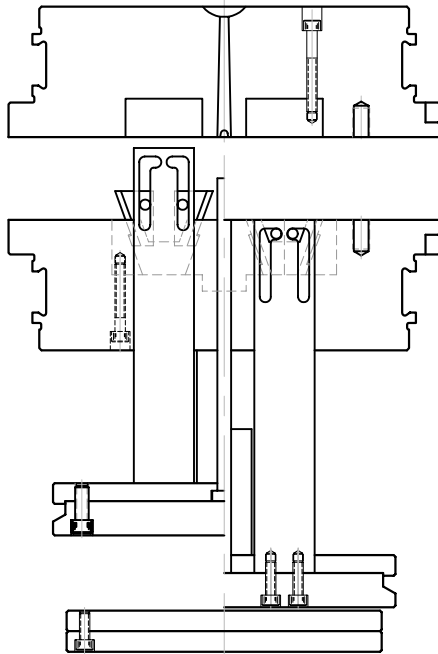


COPYRIGHT © PLEASANT PRECISION, INC.®  
1991, 1993, 1997, 1998, 1999, 2000. ALL RIGHTS RESERVED.

BUTTERFLY SLIDE LIFTERS  
WITH SLEEVE EJECTON.

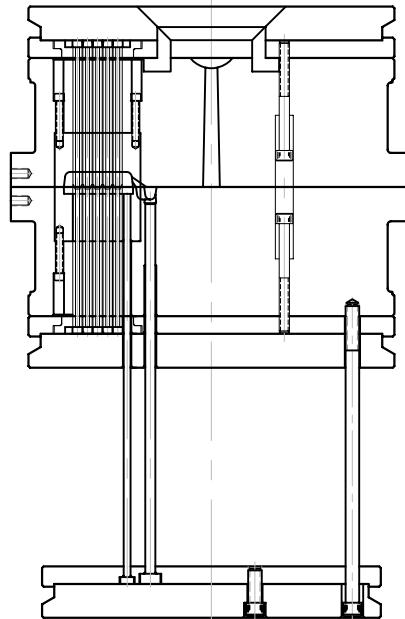
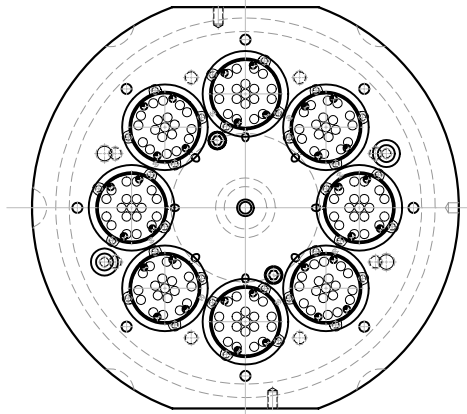


SLEEVE EJECTION WITH EJECTOR  
ACTIVATED SLIDES.



COPYRIGHT © PLEASANT PRECISION, INC.®  
1991, 1993, 1997, 1998, 1999, 2000 ALL RIGHTS RESERVED

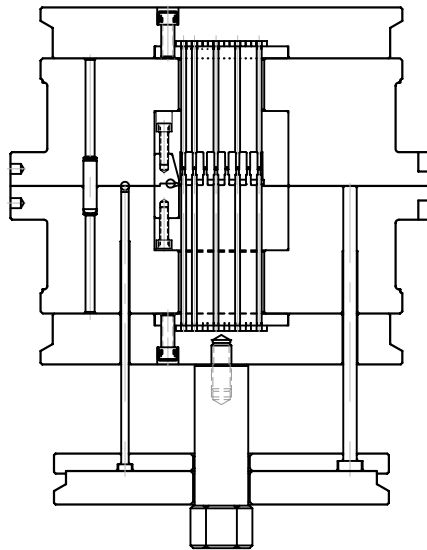
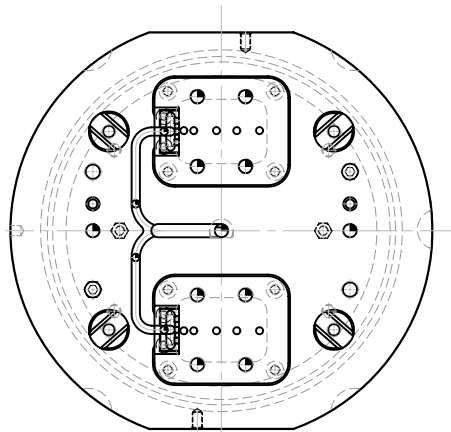
SLEEVE EJECTION WITH  
EJECTOR ACTIVATED  
SLIDE LIFTERS



COPYRIGHT © PLEASANT PRECISION, INC.®  
1991, 1993, 1997, 1998, 1999, 2000 ALL RIGHTS RESERVED

DOUBLE STRIPPER

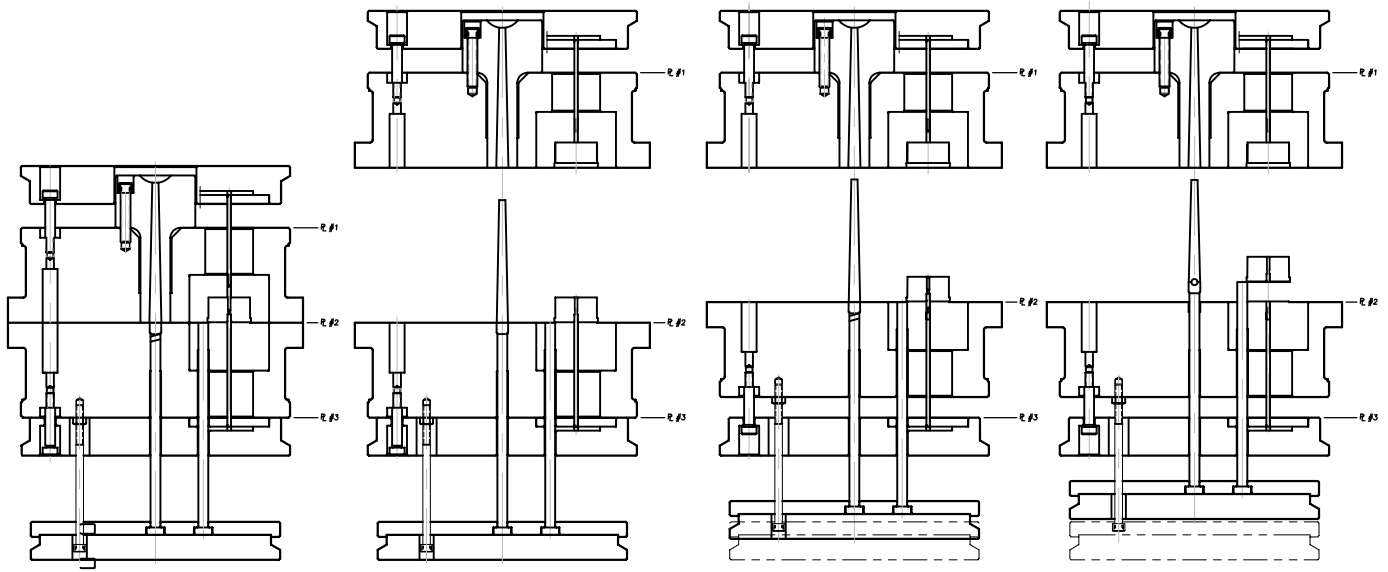
7.11



COPYRIGHT © PLEASANT PRECISION, INC.®  
1991, 1993, 1997, 1998, 1999, 2000. ALL RIGHTS RESERVED

DOUBLE STRIPPER  
ELECTRIC HEATED  
ROUND MATE WITH  
PARTING LINE LOCKS

7.12



Parting line #1 opens.

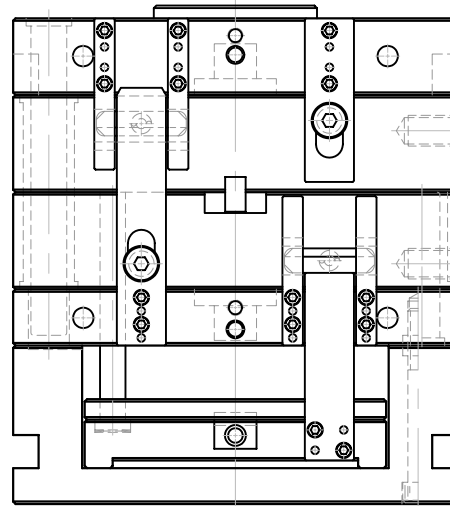
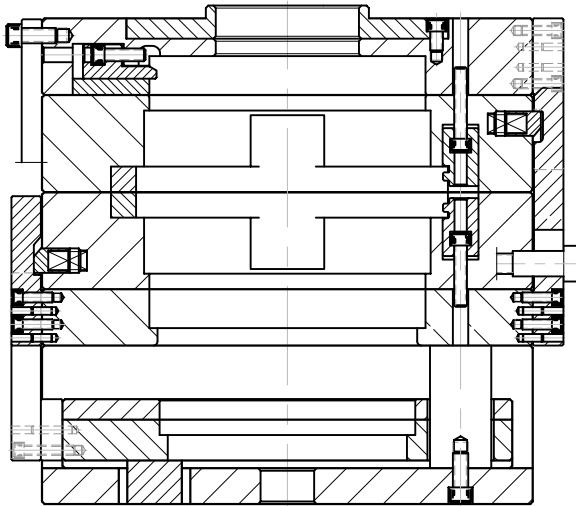
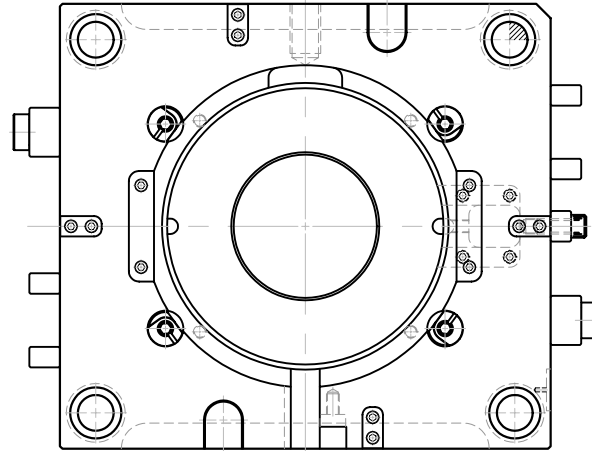
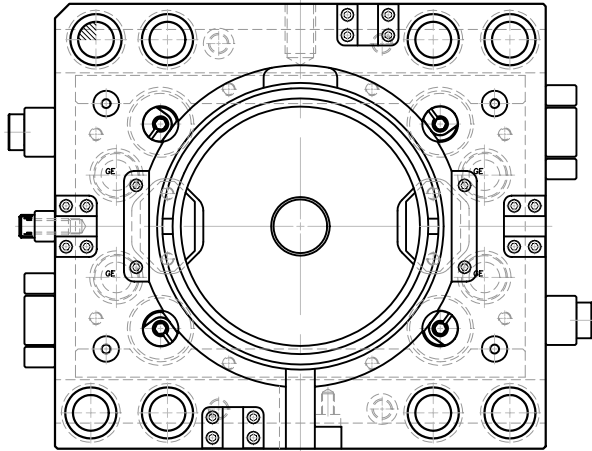
Parting line #2 opens.

Parting line #3 opens  
while ej. plates follow.

Parting line #3 stops.  
Ej. plates continue forward  
to eject parts and runner.

COPYRIGHT © PLEASANT PRECISION, INC.®  
1991, 1993, 1997, 1998, 1999, 2000. ALL RIGHTS RESERVED

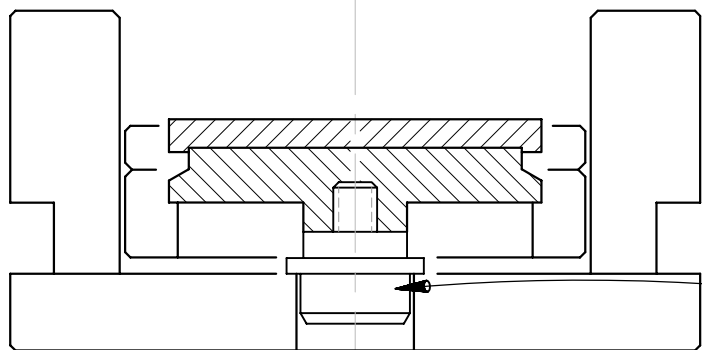
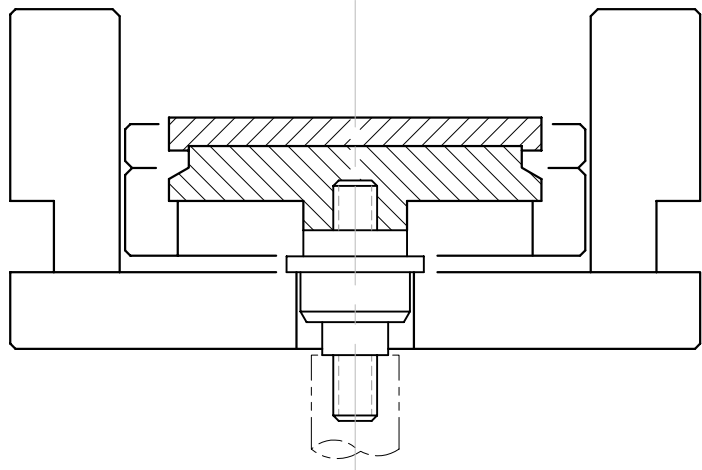
DOUBLE STRIPPER  
ELECTRIC HEATED  
ROUND MATE SHOWING  
P.L. OPENING STAGES



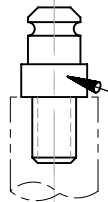
COPYRIGHT © PLEASANT PRECISION, INC.®  
1991, 1993, 1997, 1998, 1999, 2000. ALL RIGHTS RESERVED

ROUND MATE  
ELECTRIC HEATED  
DOUBLE STRIPPER  
MASTER FRAME

OPTIONAL QUICK CONNECTS CAN  
CAN BE ADDED TO EXPEDITE  
ATTACHMENT OF MASTER FRAME  
TO PRESS. SPECIAL BOTTOM EJECTOR  
RETAINER PLATE IS REQUIRED.



CAT# RMC-0016



CAT# RMC-0015

COPYRIGHT © PLEASANT PRECISION, INC.®  
1991, 1993, 1997, 1998, 1999, 2000 ALL RIGHTS RESERVED

QUICK CONNECT