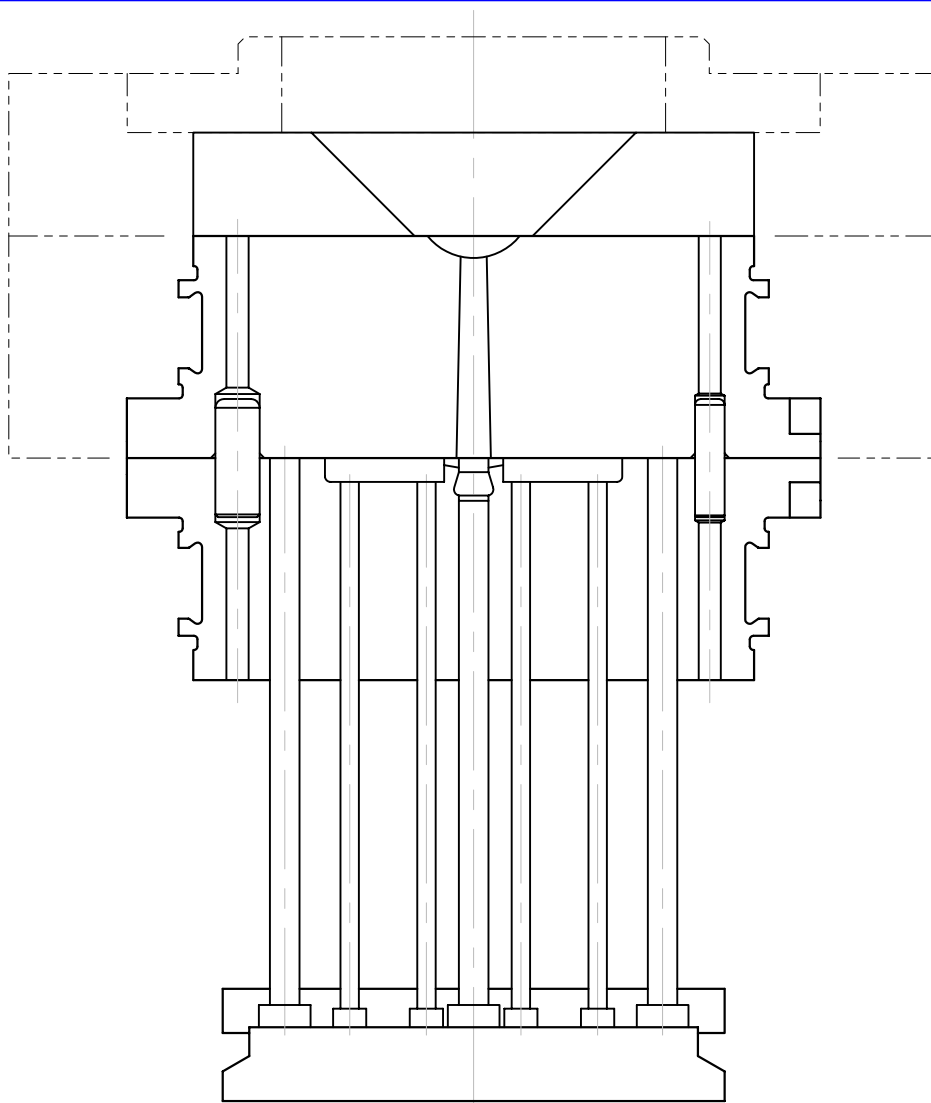


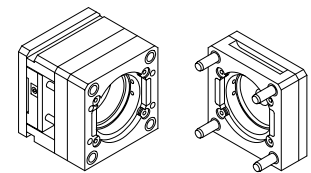
CENTER SPRUE IS THE  
TRADITIONAL METHOD FOR  
DELIVERING THE PLASTIC  
TO THE PARTING LINE.

COPYRIGHT © PLEASANT PRECISION, INC.®  
1991, 1993, 1997, 1998, 1999, 2000 ALL RIGHTS RESERVED

CENTER SPRUE



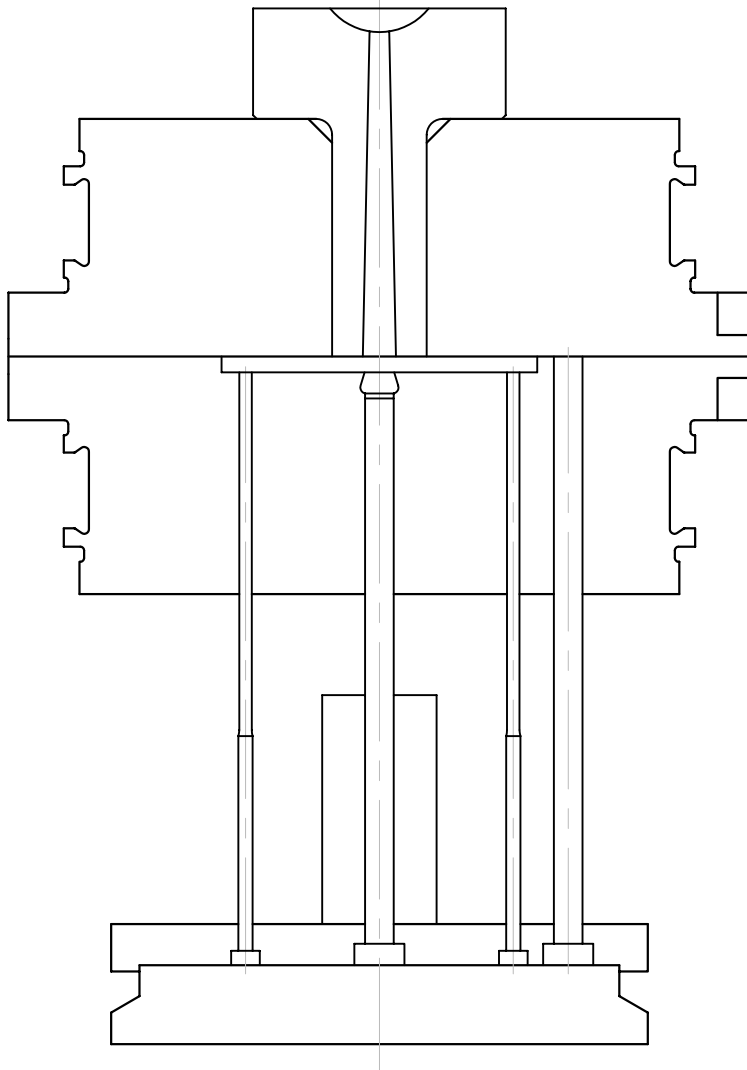
USING AN EXTENDED NOZZLE  
ON THE MOLDING PRESS  
ALLOWS FOR SHORTENING  
OF THE SPRUE. THE NOZZLE  
RADIUS IS MACHINED  
DIRECTLY INTO THE ROUND  
MATE<sup>®</sup> INSERT.



SINGLE-POSITION

COPYRIGHT © PLEASANT PRECISION, INC.®  
1991, 1993, 1997, 1998, 1999, 2000 ALL RIGHTS RESERVED

EXTENDED NOZZLE  
CENTER SPRUE

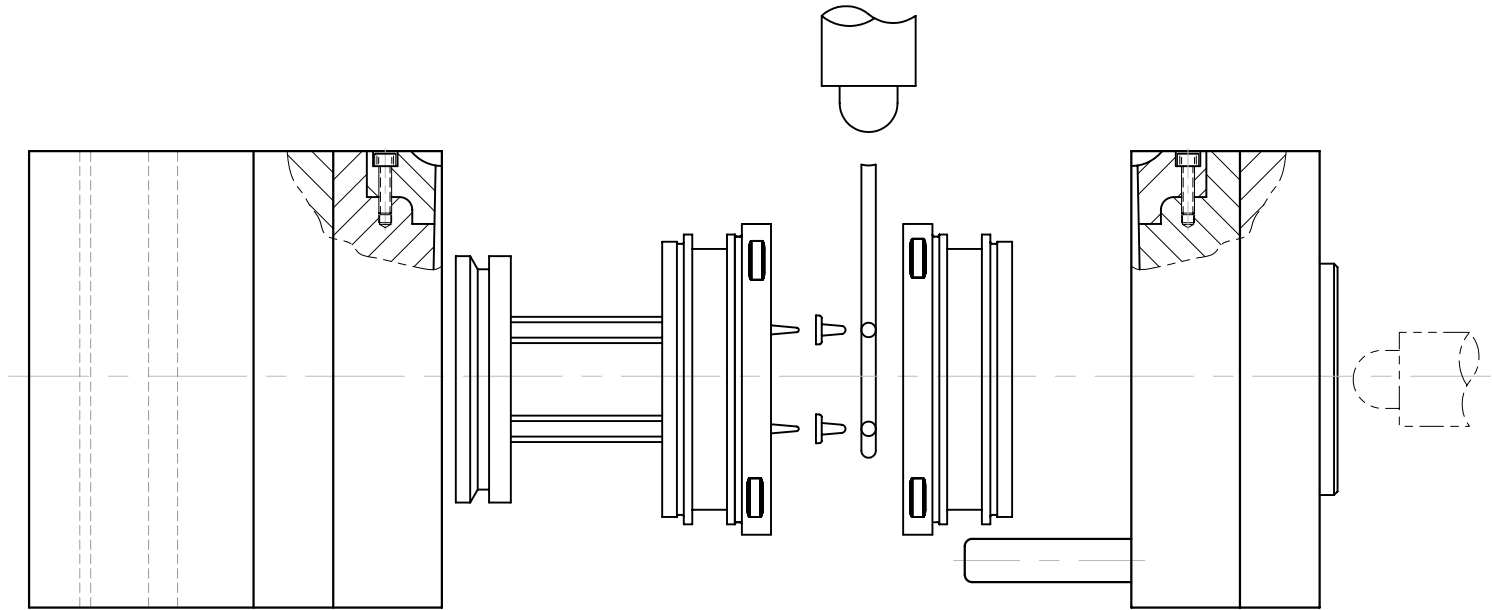


STANDARD SPRUE  
BUSHINGS CAN BE  
INSTALLED IN THE  
ROUND MATE<sup>®</sup> INSERT.

COPYRIGHT © PLEASANT PRECISION, INC.<sup>®</sup>  
1991, 1993, 1997, 1998, 1999, 2000 ALL RIGHTS RESERVED

STANDARD SPRUE  
BUSHING

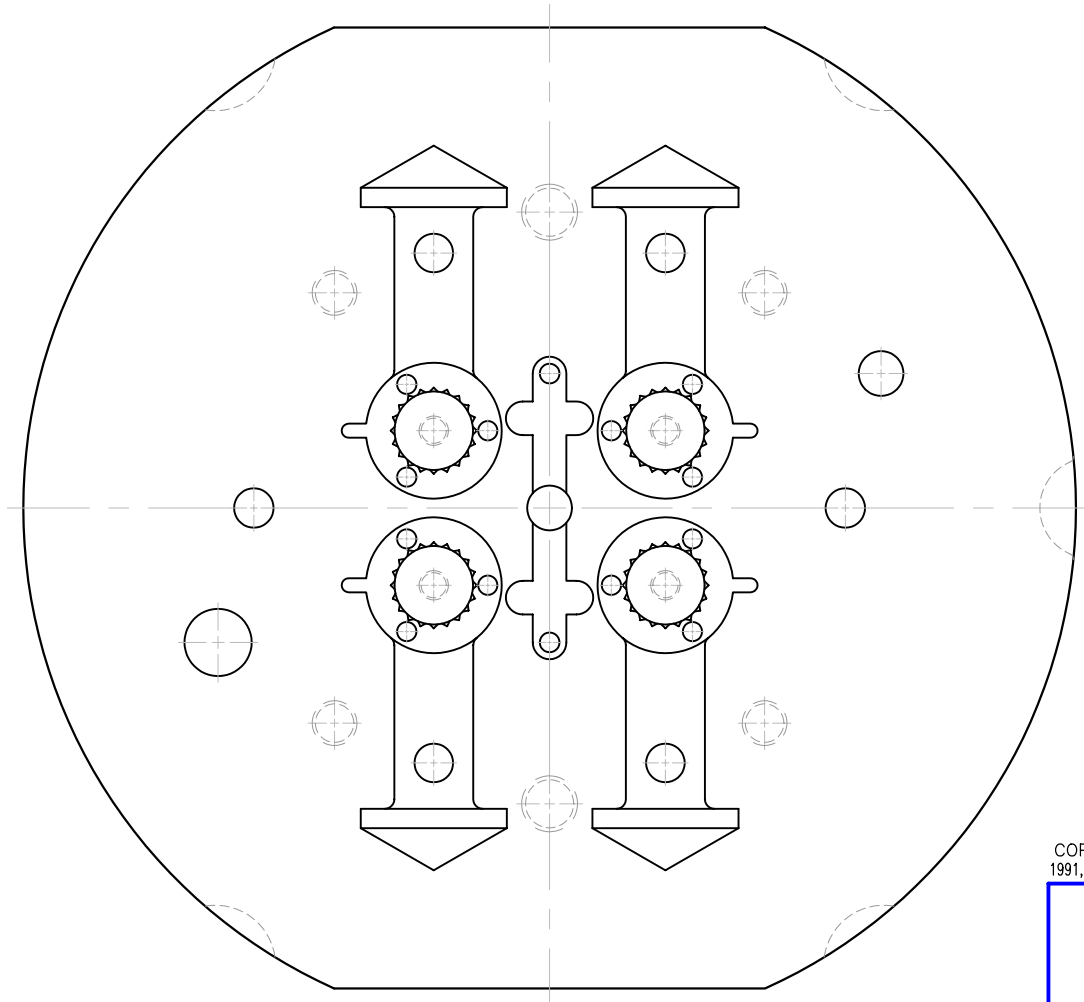
ON CERTAIN MOLDING  
MACHINES, THE INJECTION  
BARREL CAN BE MOVED TO  
A VERTICAL POSITION.  
THIS OPTION CAN BE ADDED  
TO THE SINGLE POSITION  
MASTER FRAME.



COPYRIGHT © PLEASANT PRECISION, INC.®  
1991, 1993, 1997, 1998, 1999, 2000 ALL RIGHTS RESERVED

OPTIONAL  
PARTING LINE RUNNER

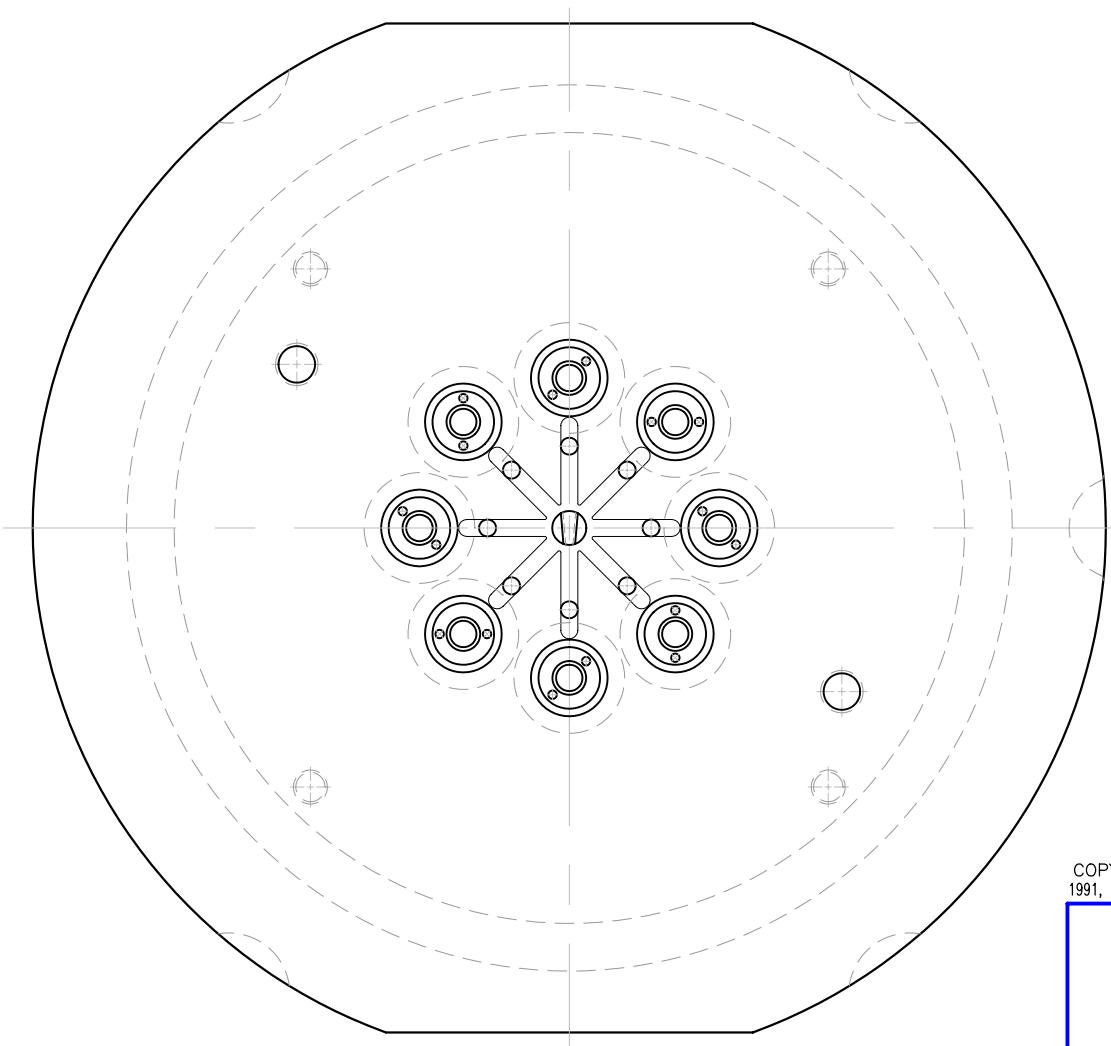
RUNNER LAYOUT IS THE  
BASIC RESULT OF CAVITY  
QUANTITY AND LOCATION.  
THE ROUND MATE® HAS A  
NATURAL TENDENCY TO  
PROMOTE A BALANCED  
RUNNER SYSTEM.



COPYRIGHT © PLEASANT PRECISION, INC.®  
1991, 1993, 1997, 1998, 1999, 2000 ALL RIGHTS RESERVED

"H" PATTERN  
RUNNER LAYOUT

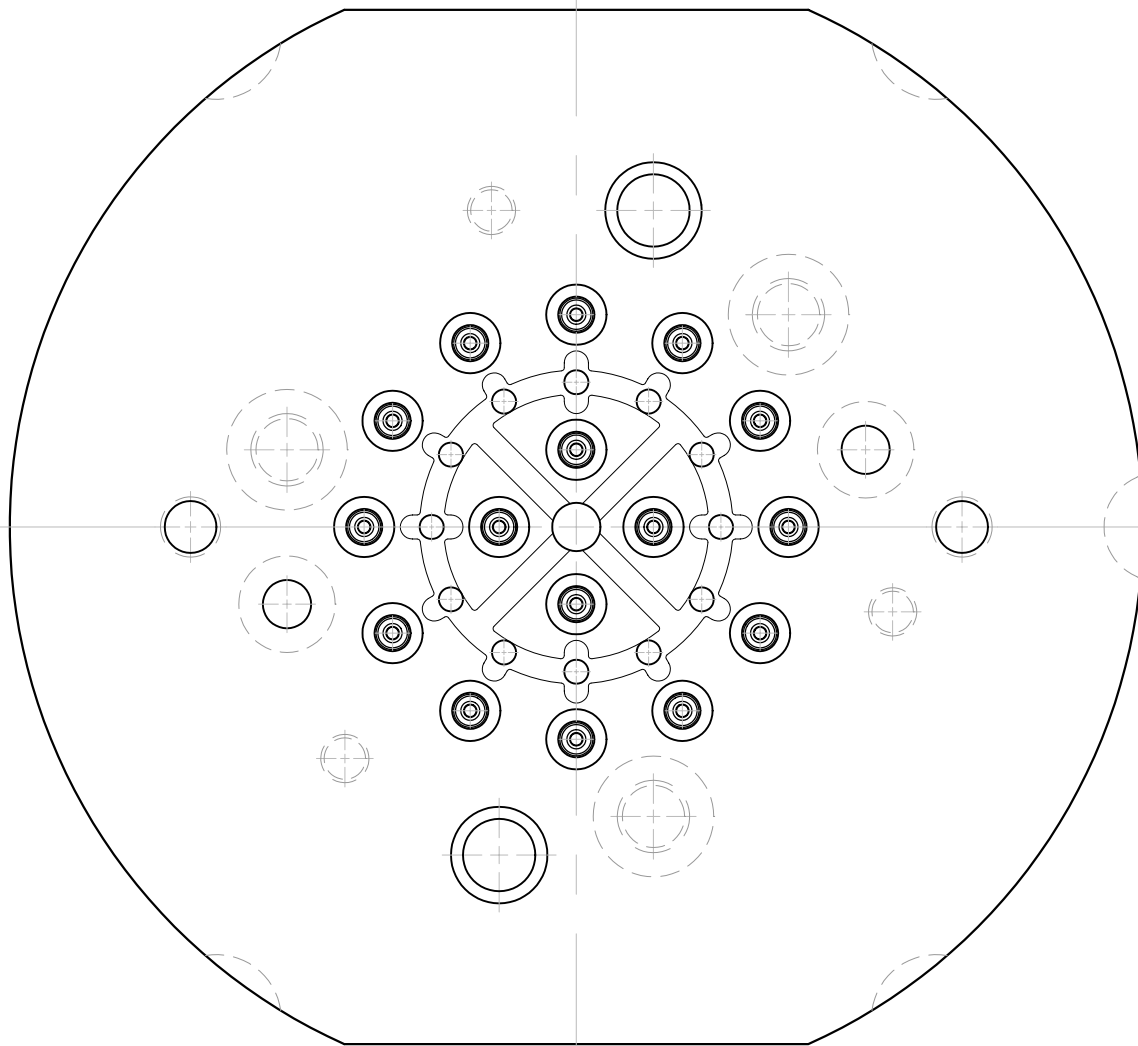
THE STAR PATTERN IS PERFECTLY BALANCED AND REDUCES RUNNER VOLUME WHEN THE CAVITIES ARE POSITIONED RADially.



COPYRIGHT © PLEASANT PRECISION, INC.®  
1991, 1993, 1997, 1998, 1999, 2000 ALL RIGHTS RESERVED

STAR PATTERN  
RUNNER LAYOUT

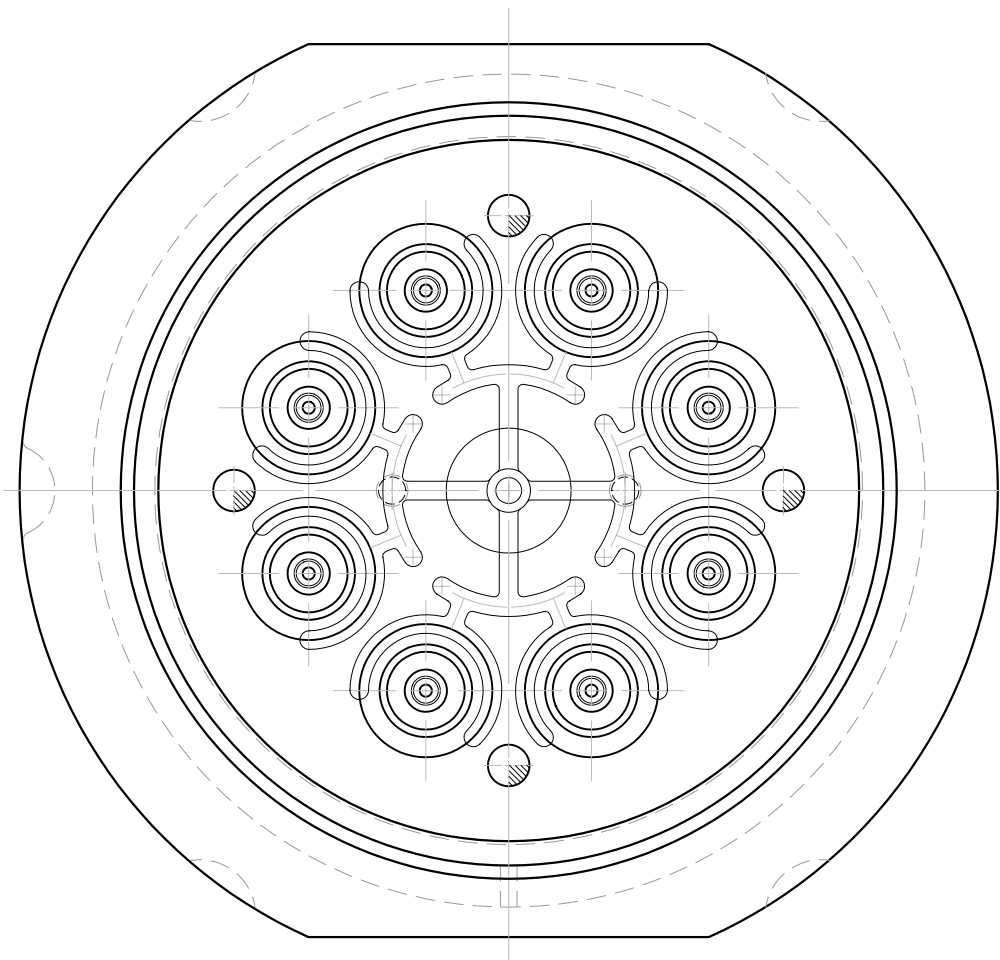
THE SPOKE PATTERN IS A  
UNIQUE WAY TO TUCK A FEW  
MORE CAVITIES INTO A  
ROUND MATE<sup>®</sup> INSERT.



COPYRIGHT © PLEASANT PRECISION, INC.®  
1991, 1993, 1997, 1998, 1999, 2000 ALL RIGHTS RESERVED

SPOKE PATTERN  
RUNNER LAYOUT

DOUBLE GATED  
CAVITY INSERTS

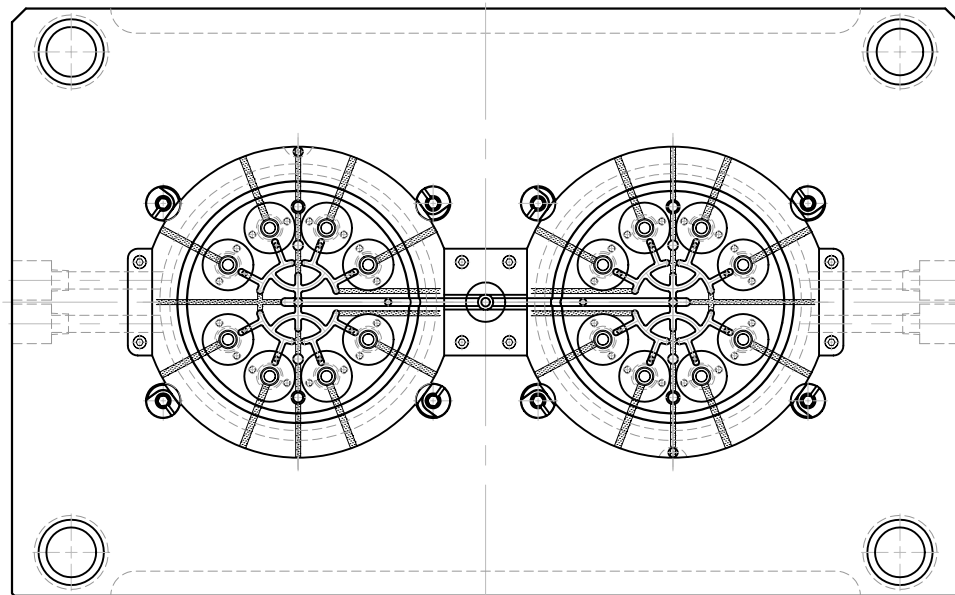


COPYRIGHT © PLEASANT PRECISION, INC.®  
1991, 1993, 1997, 1998, 1999, 2000 ALL RIGHTS RESERVED

DOUBLE GATED  
CAVITY INSERTS

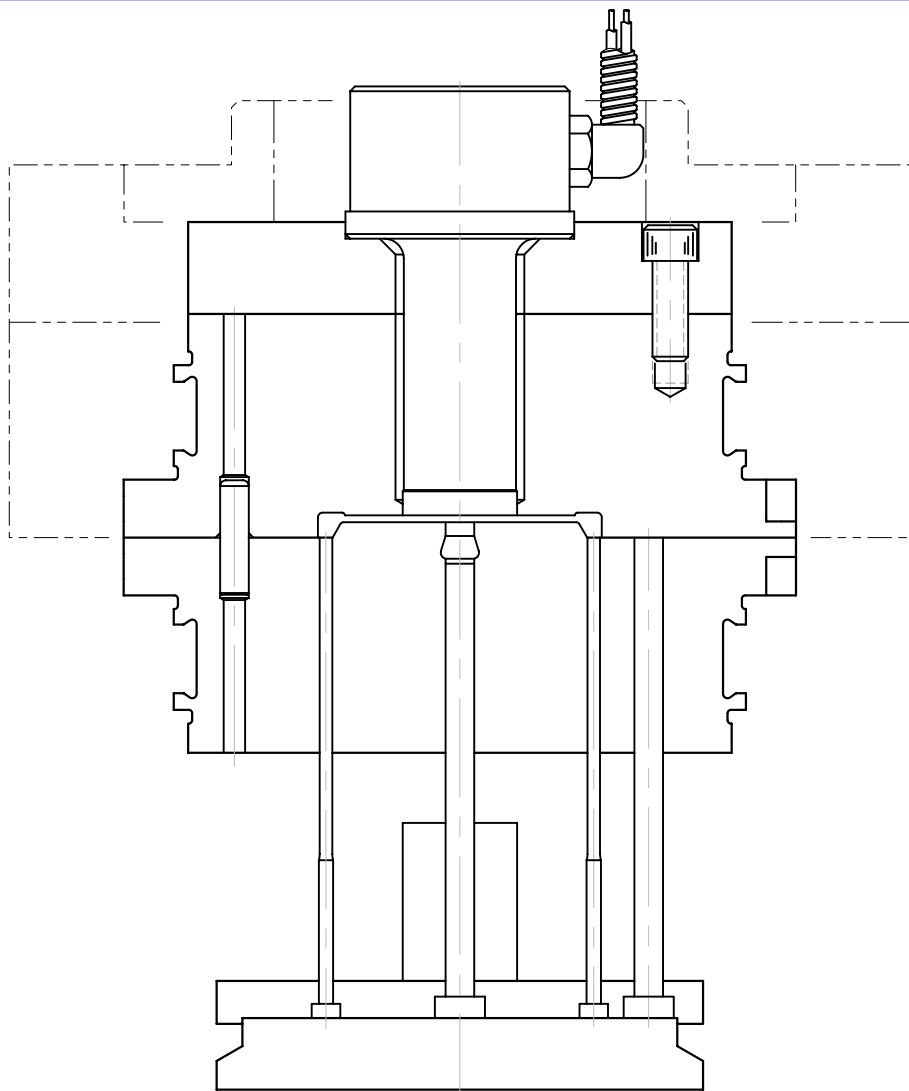


GATING ON MULTI POSITION  
MASTER FRAME INSERTS  
IS ACCOMPLISHED FROM  
THE SIDE OF THE INSERT.



COPYRIGHT © PLEASANT PRECISION, INC.®  
1991, 1993, 1997, 1998, 1999, 2000 ALL RIGHTS RESERVED

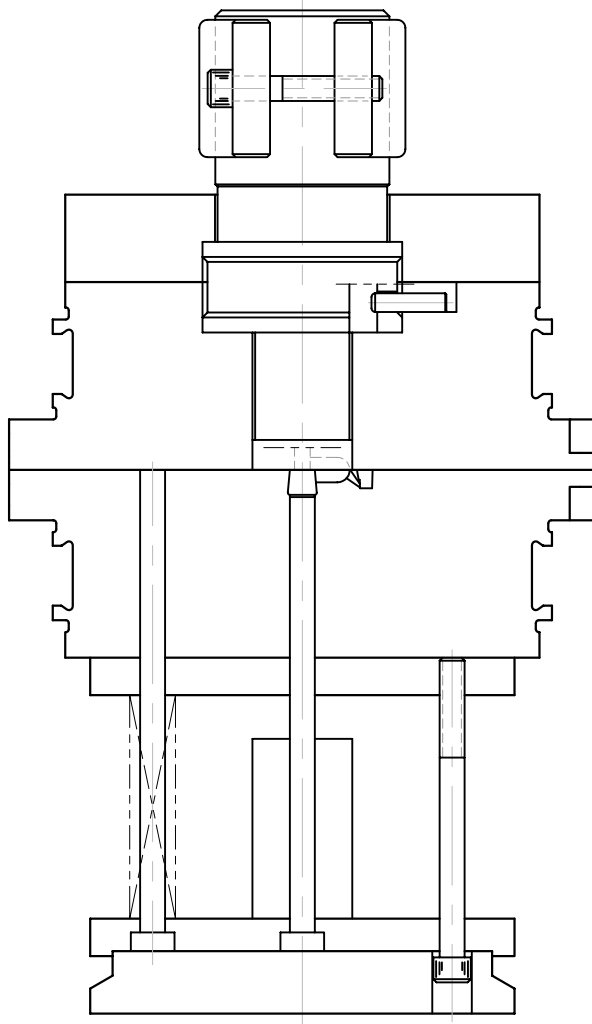
MULTI POSITION  
MASTER FRAME RUNNER



COPYRIGHT © PLEASANT PRECISION, INC.®  
1991, 1993, 1997, 1998, 1999, 2000 ALL RIGHTS RESERVED

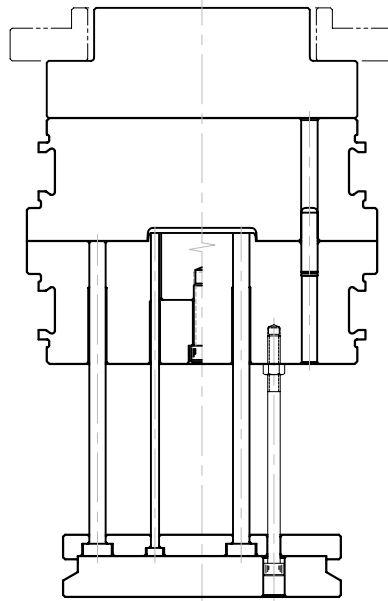
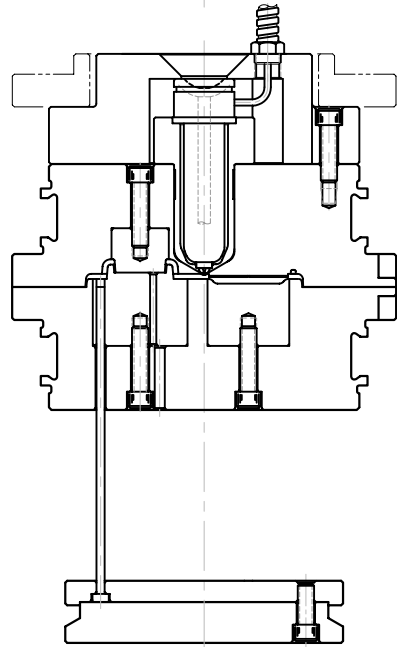
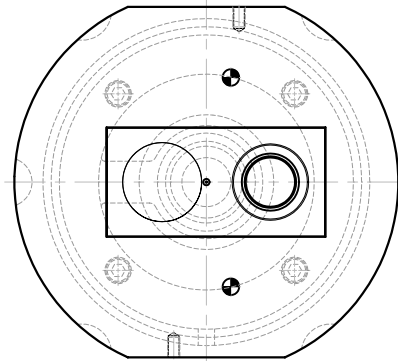
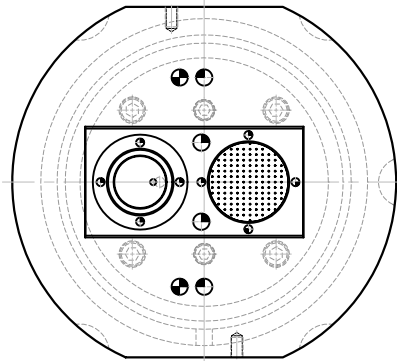
HOT SPRUE BUSHING

6.10



COPYRIGHT © PLEASANT PRECISION, INC.®  
1991, 1993, 1997, 1998, 1999, 2000 ALL RIGHTS RESERVED

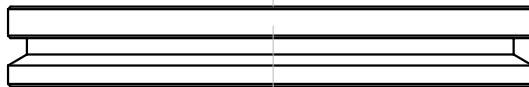
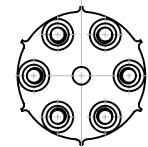
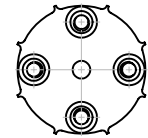
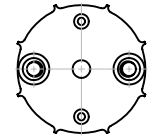
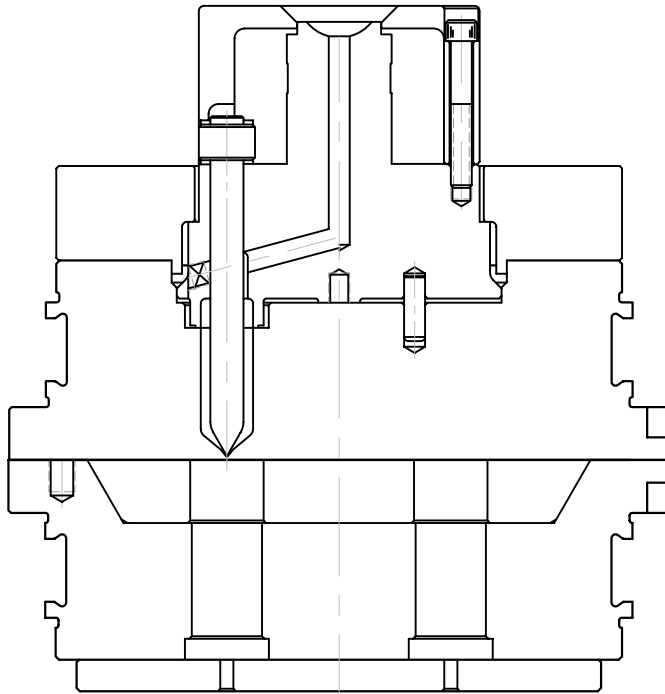
HOT SPRUE BUSHING



COPYRIGHT © PLEASANT PRECISION, INC.®  
1991, 1993, 1997, 1998, 1999, 2000 ALL RIGHTS RESERVED

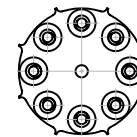
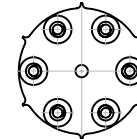
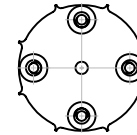
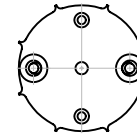
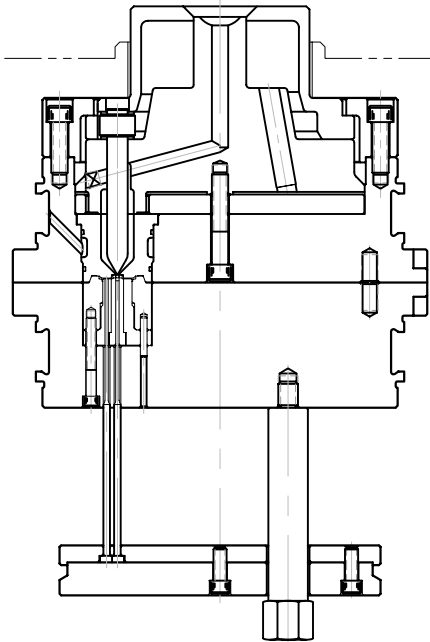
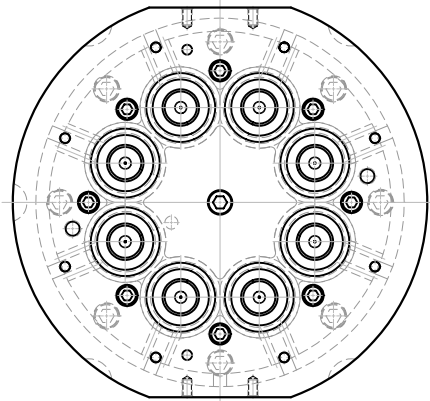
HOT TIP BUSHING

HIGH PRODUCTION  
RUNNERLESS MOLDING AT  
GREATLY REDUCED COST.  
ROUND MATE® IS ESPECIALLY  
EFFECTIVE FOR JUST IN  
TIME MANUFACTURING.



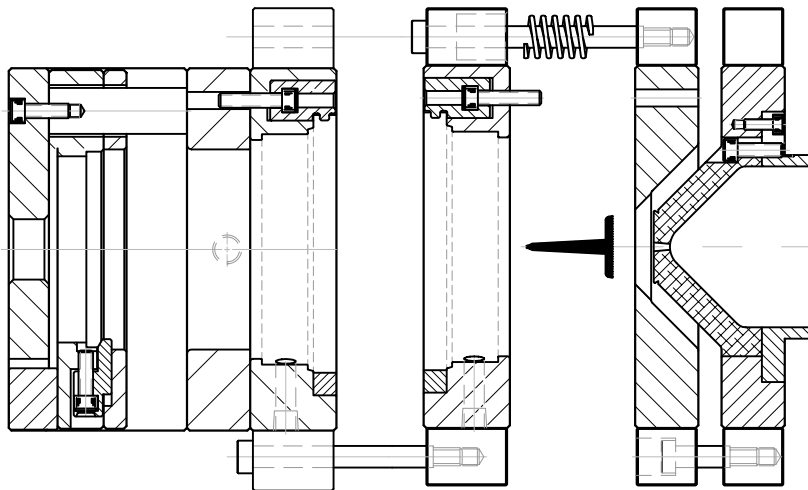
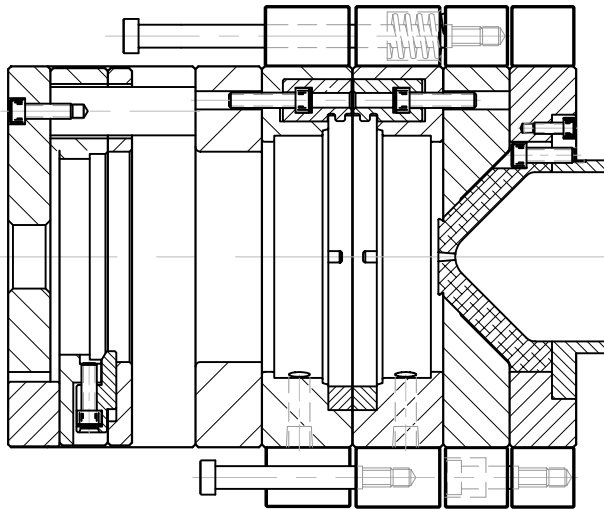
COPYRIGHT © PLEASANT PRECISION, INC.®  
1991, 1993, 1997, 1998, 1999, 2000 ALL RIGHTS RESERVED

ROUND MATE® MULTI TIP  
HOT MANIFOLD



COPYRIGHT © PLEASANT PRECISION, INC.®  
1991, 1993, 1997, 1998, 1999, 2000 ALL RIGHTS RESERVED

ROUND MATE  
HOT MANIFOLD



COPYRIGHT © PLEASANT PRECISION, INC.®  
1991, 1993, 1997, 1998, 1999, 2000 ALL RIGHTS RESERVED

3 PLATE  
EXTENDED NOZZLE DISC