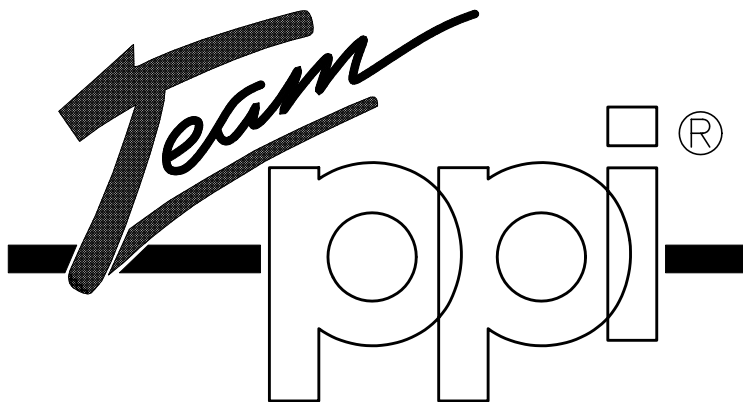


ROUND MATE®

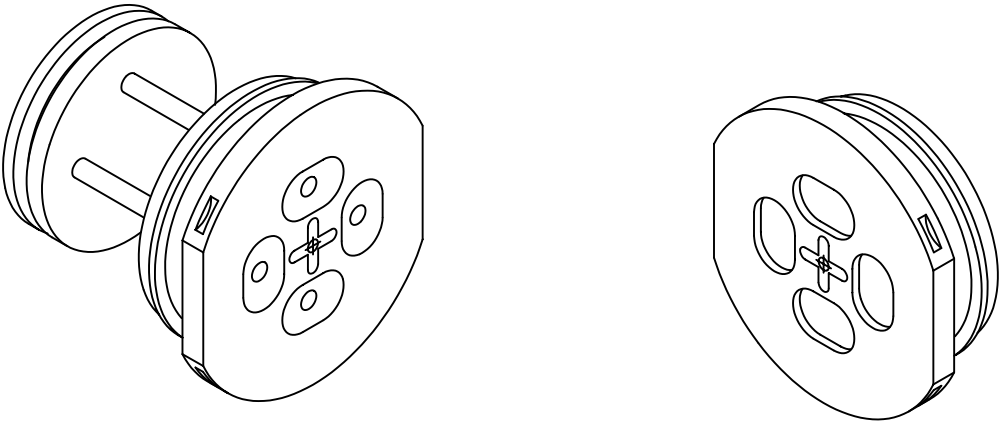
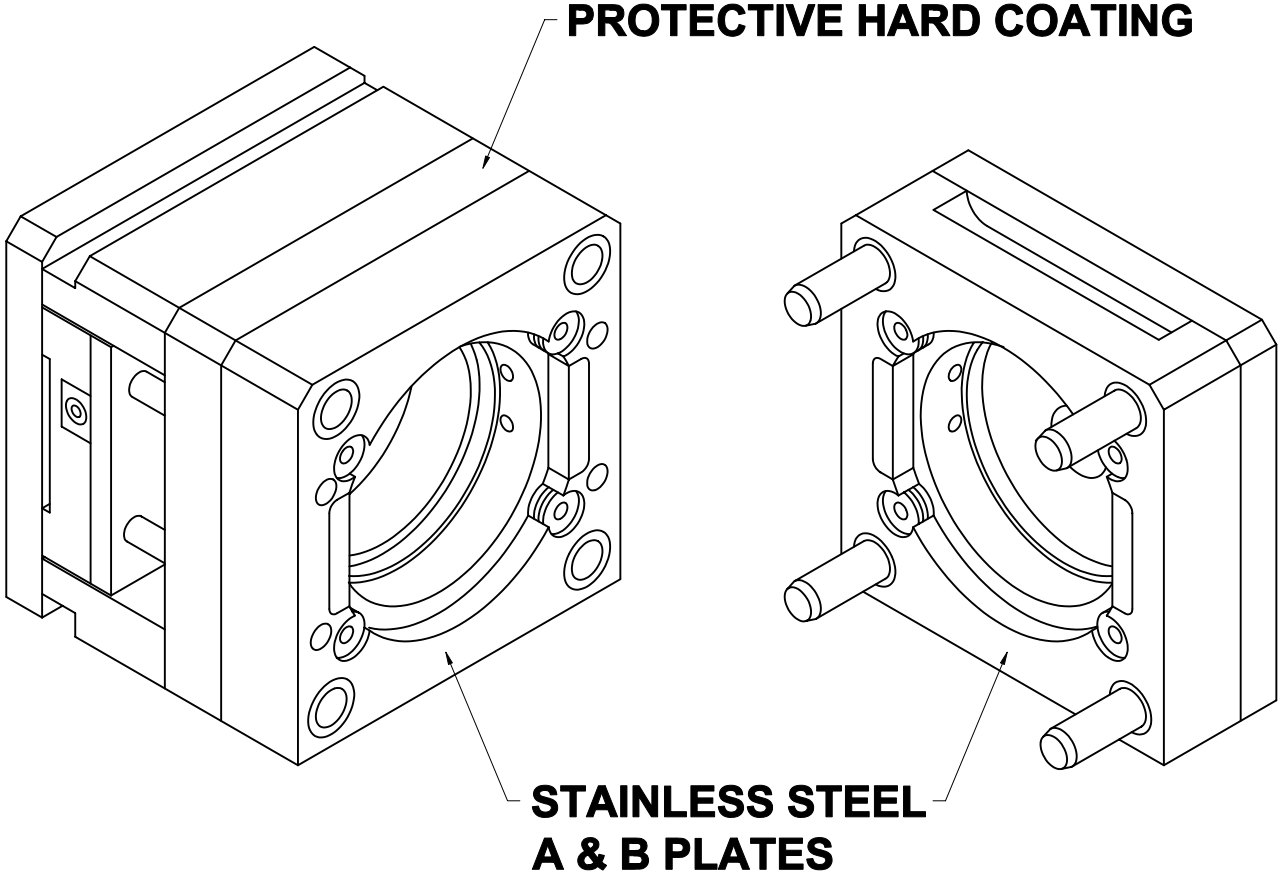
Systems

C R E A T E D B Y



**AVAILABLE EXCLUSIVELY FROM
TEAM PPI 1-800-860-3974**

ROUND MATE® Systems



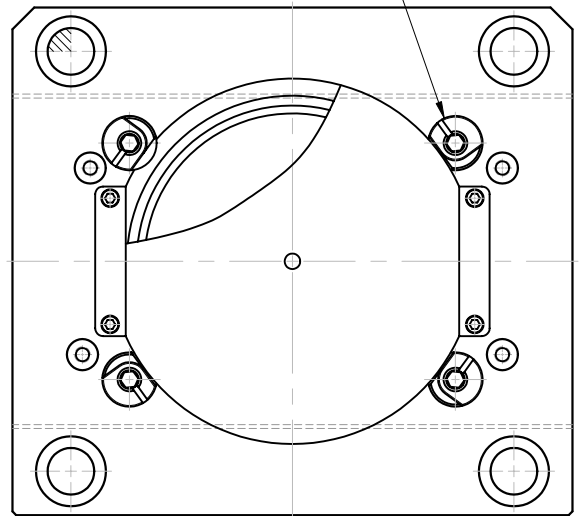
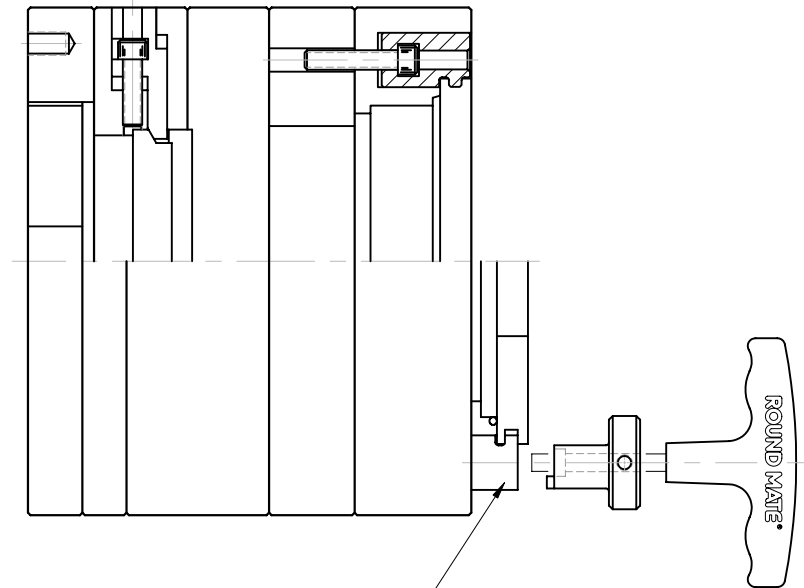
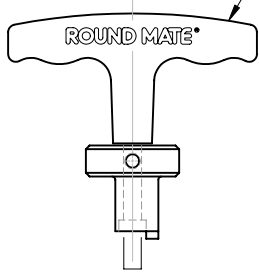
SINGLE POSITION MASTER FRAME

A

10 MINUTE MOLD CHANGES

**HEX KEY WRENCH
LOCKS IN EJECTOR DISC**

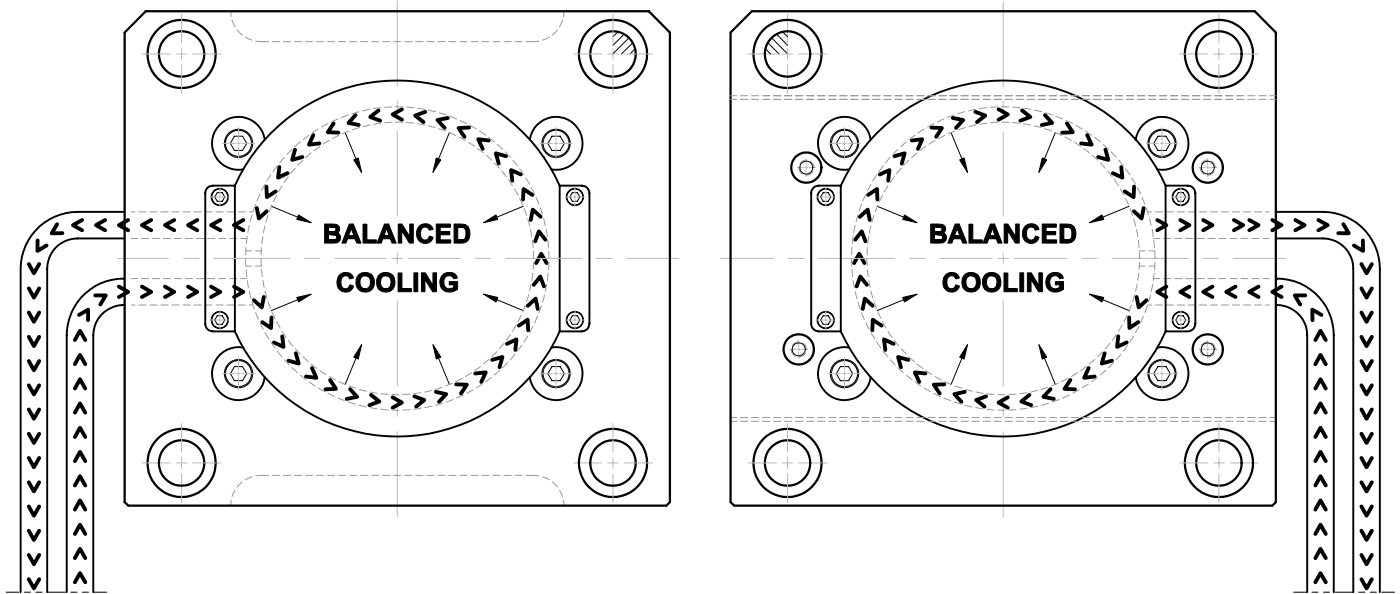
**RETAINER LIFTER
1/4 TURN TO LOCK**



LOCKS & LIFTS INSERT

A

BUILT IN WATER COOLING JACKET

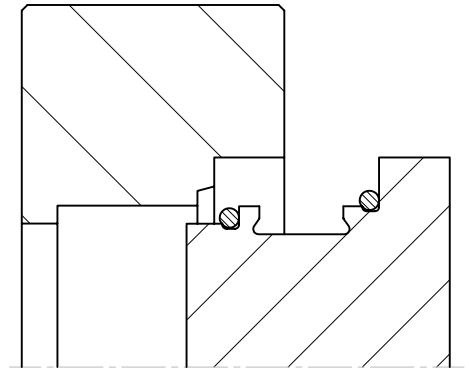


- PROVIDES BALANCED COOLING**
- PROMOTES GOOD MOLD "PM"**
- REDUCES DESIGN TIME**

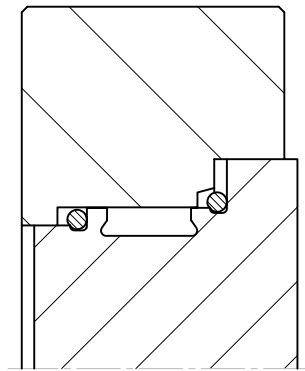
A

STEPPED INSERT POCKET

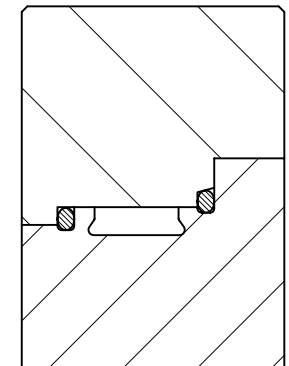
**INSERT POSITIONED
FOR LOADING**



**INSERT NEARLY
SEATED
"O" RINGS FREE**



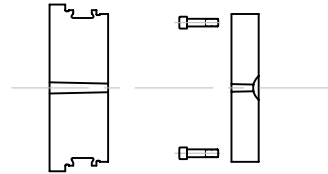
**INSERT SEATED
AND CLAMPED
"O" RINGS COMPRESSED**



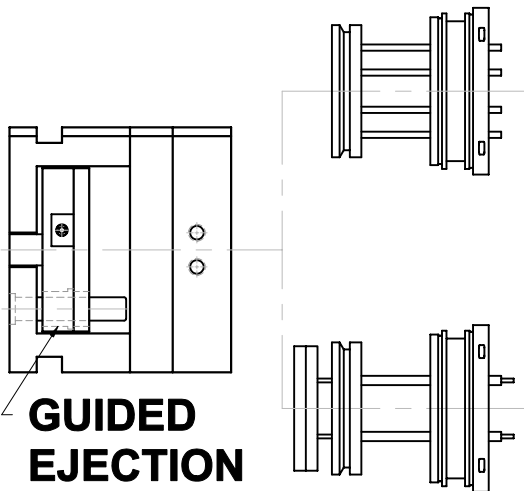
A

STANDARD EJECTION AND GATING

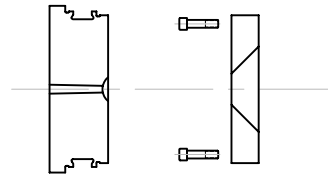
STANDARD SPRUE



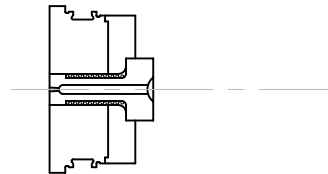
STANDARD EJECTION



EXTENDED NOZZLE

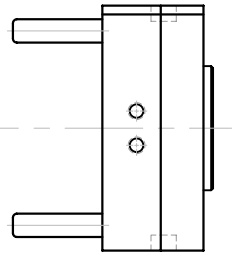
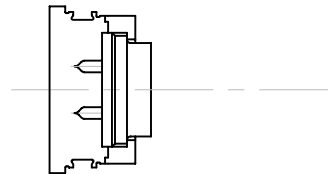


HOT SPRUE



SLEEVE EJECTION

HOT MANIFOLD



STOCK ROUND INSERTS

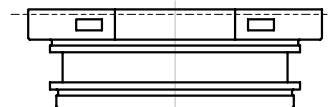
INSERT SIZES
2 1/2", 3", 4", 6", & 8"



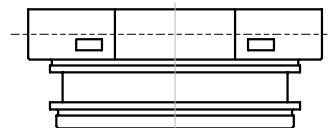
STANDARD

STOCK MATERIALS

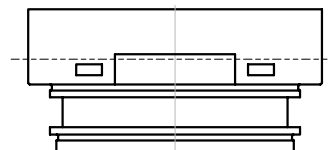
- P-20 PH
- H-13
- S-7
- 420 SS
- 420 SS PH
- ALUMINUM



.100 STANDUP

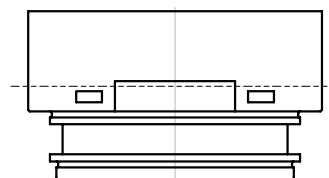


.500 STANDUP



1.00 STANDUP

**Specials Can
Be Produced**



1.50 STANDUP

A

ROUND MATE TECHNOLOGY

"IS A"

... New Paradigm

**... Continually Improving
Mold Making System**

... High Value Low Cost Investment

A

Modular Interchangeable Moldmaking System

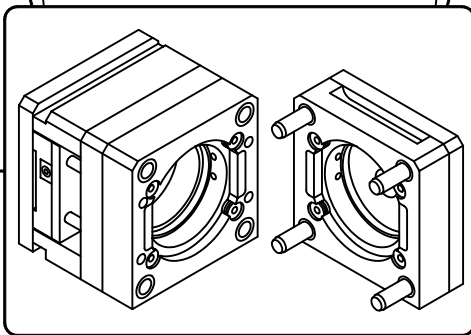
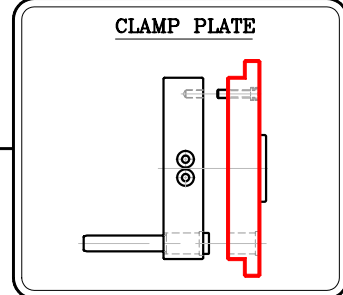
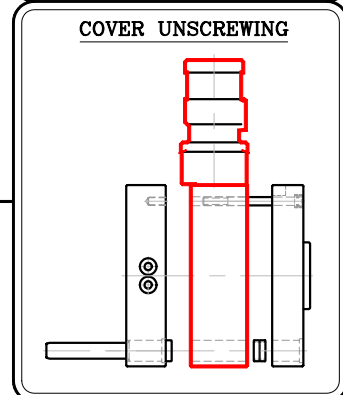
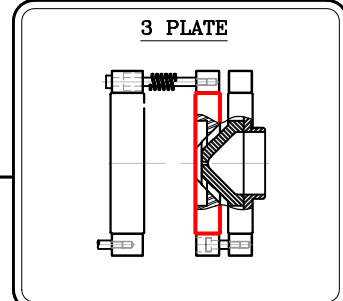
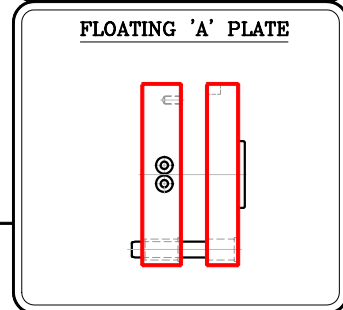
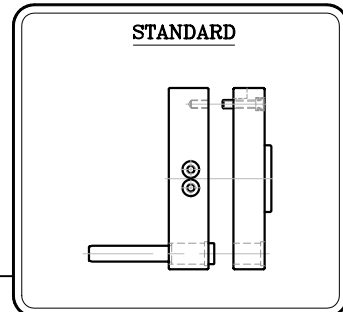
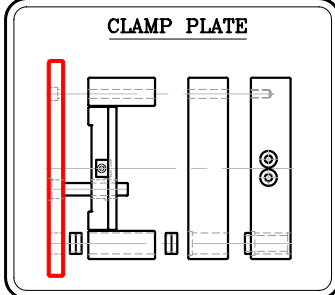
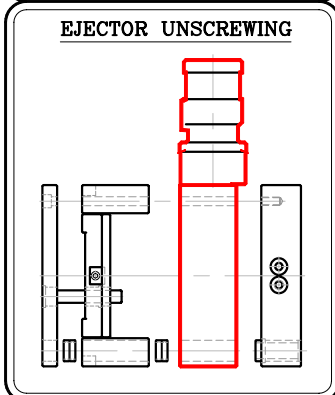
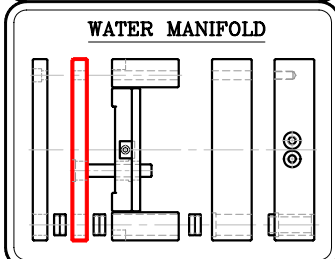
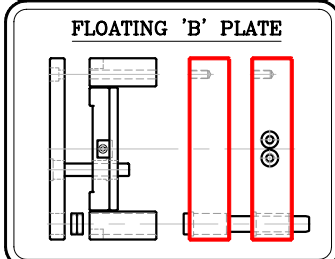
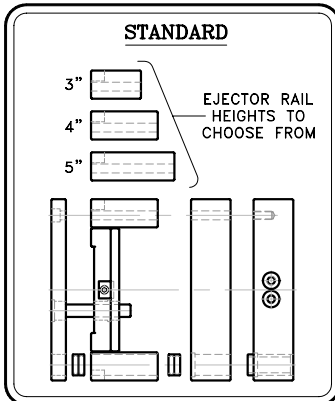
... Taylored To Your Needs

... Fit With Precision

... Rugged To Last

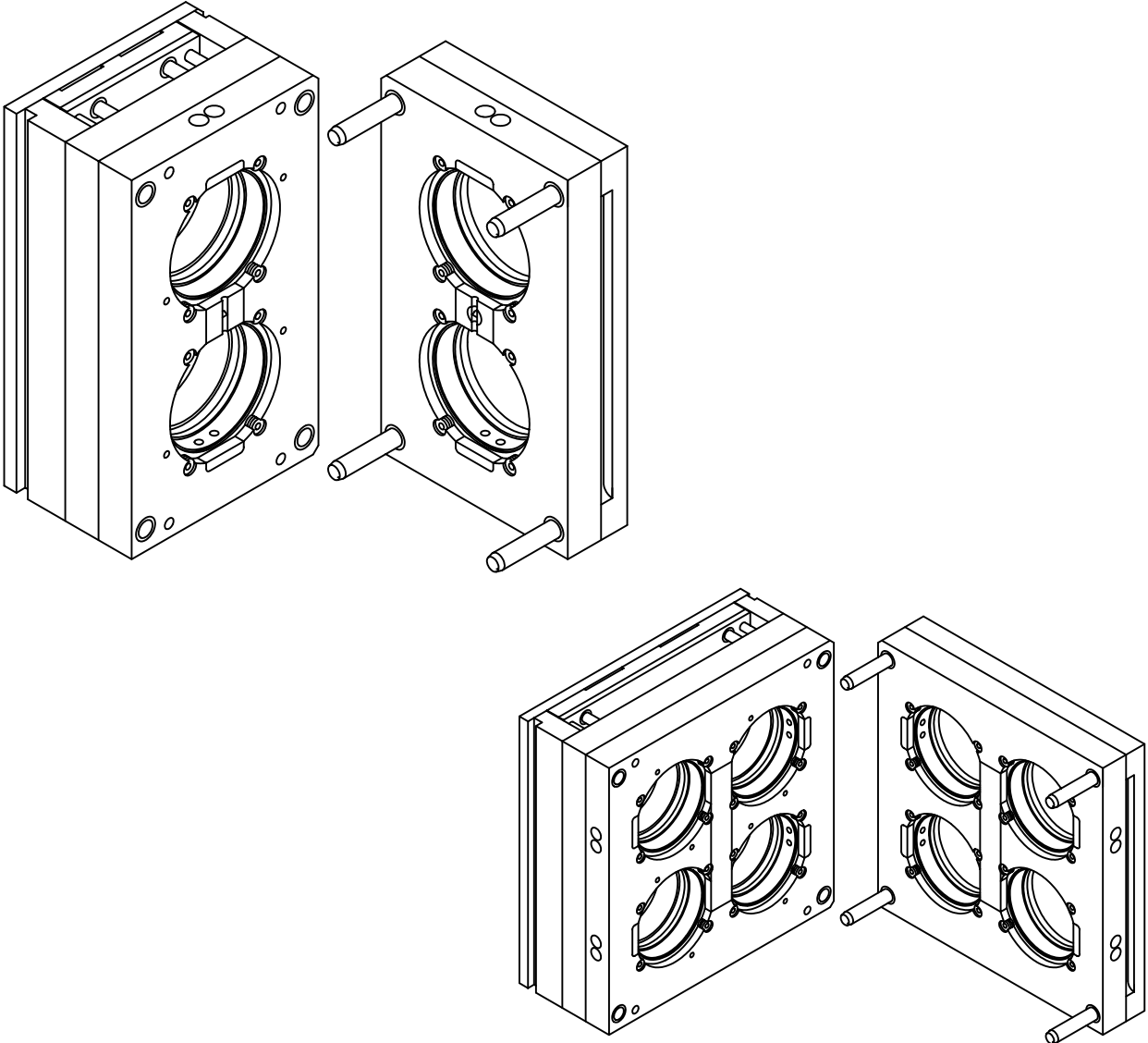
**The 1^{st.} And Only Choice
If You Want To Save
Time And Money**

SINGLE POSITION MODULAR INTERCHANGEABLE MASTER FRAMES



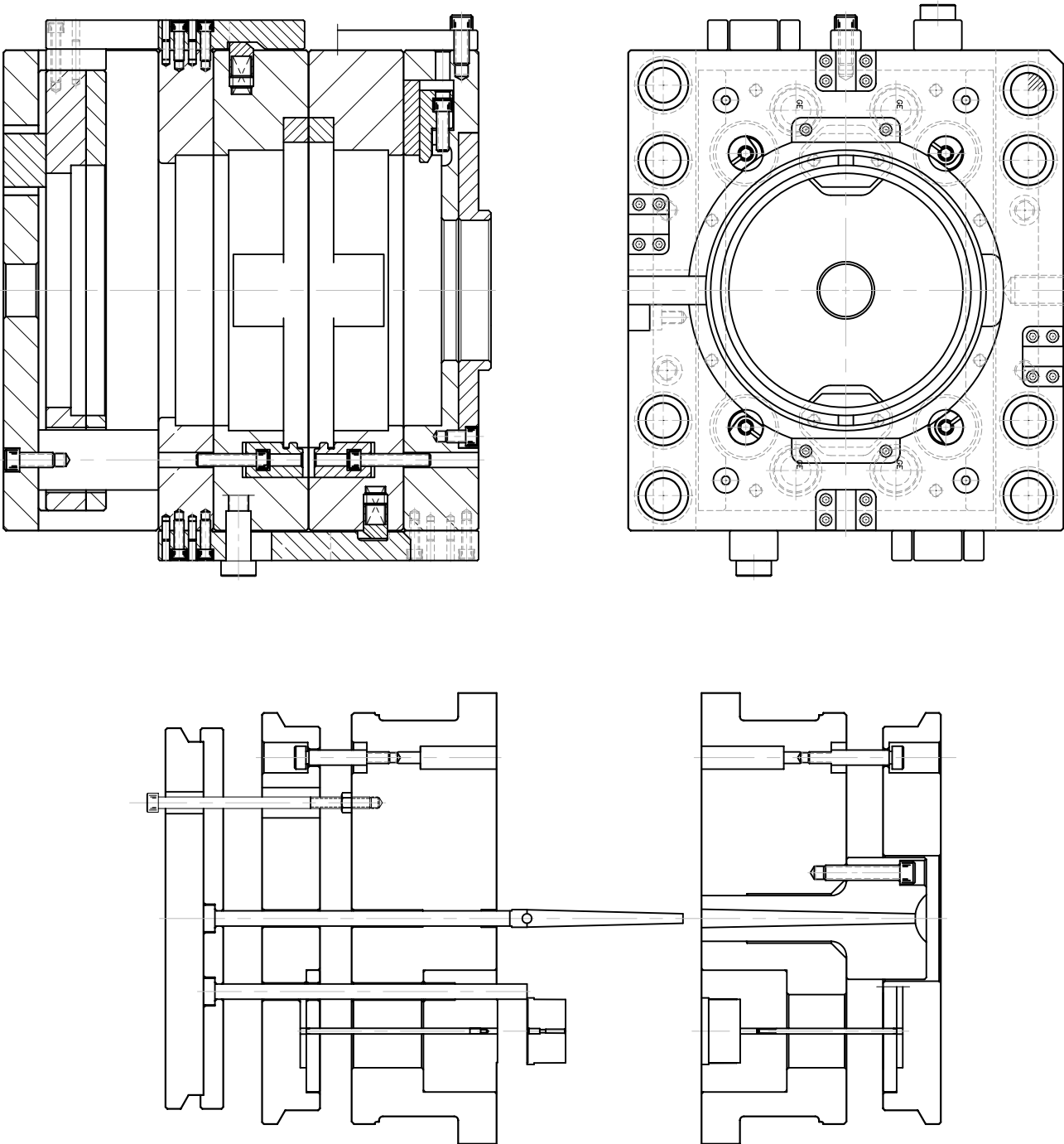
THE EXAMPLE MASTER FRAMES SHOWN REPRESENT JUST A SMALL AMOUNT OF POSSIBLE PLATE COMBINATIONS YOU CAN ORDER WITH THE NEW ROUND MATE MODULAR INTERCHANGEABLE MASTER FRAME SYSTEM. ALL COMBINATIONS MAY NOT BE AVAILABLE IN ALL SIZES.

**TWO & FOUR POSITION
MODULAR INTERCHANGEABLE
MASTER FRAMES**



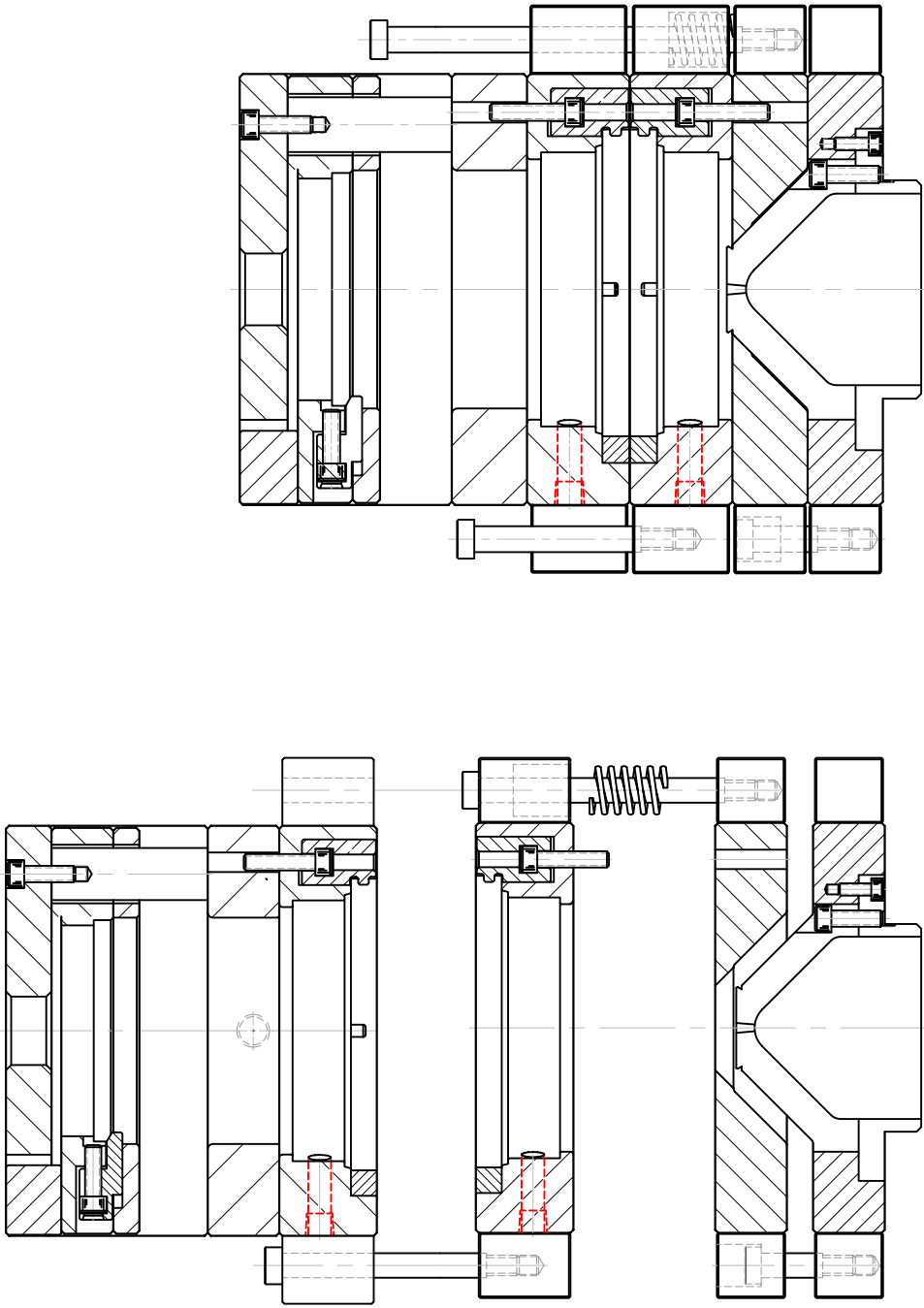
B

STRIPPER MASTER FRAME



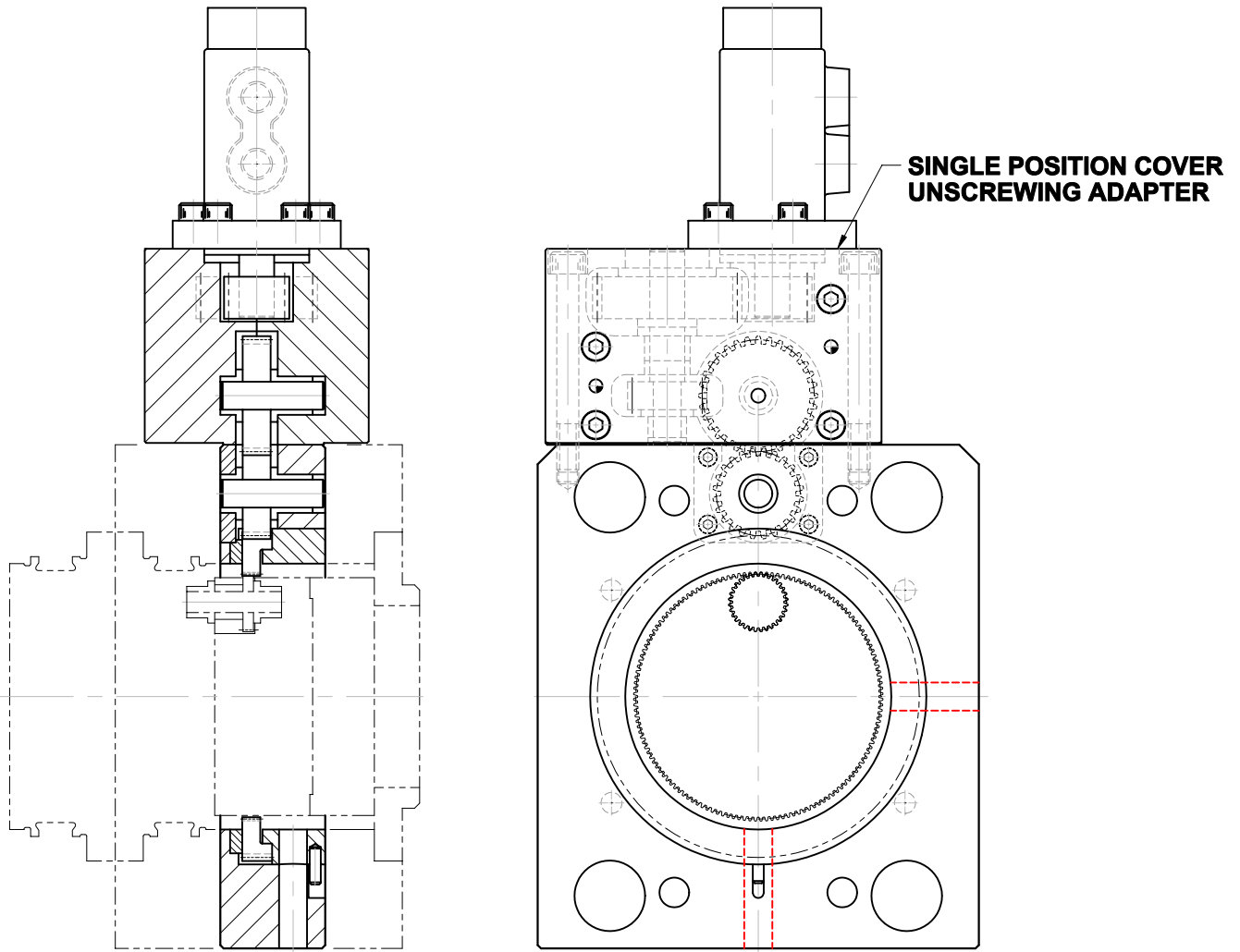
B

3 PLATE

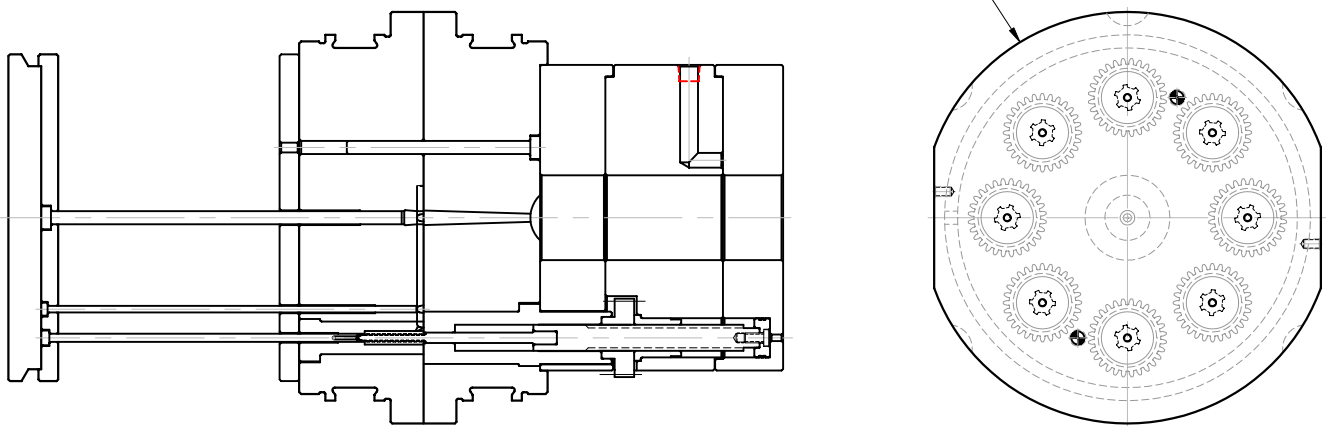


B

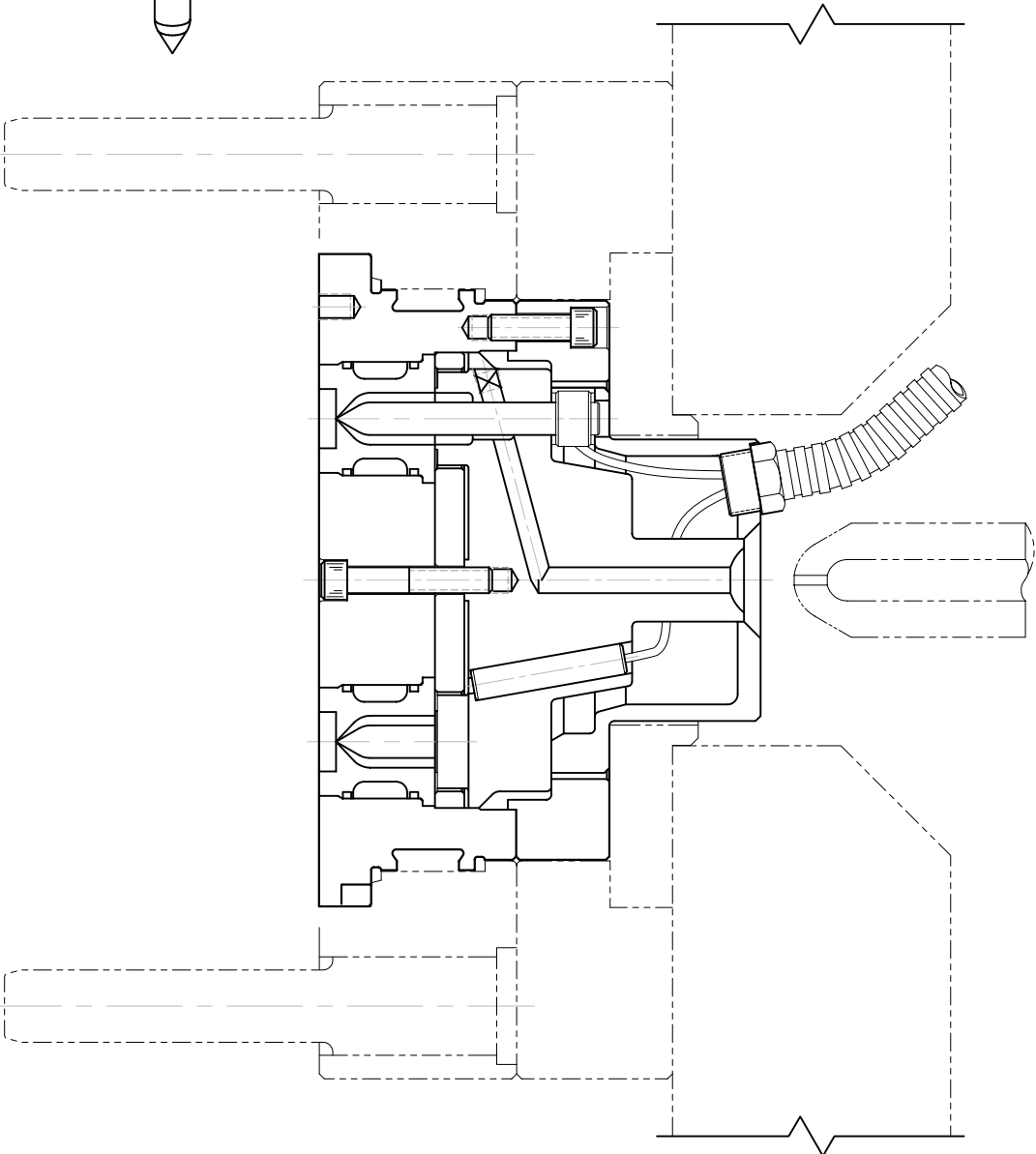
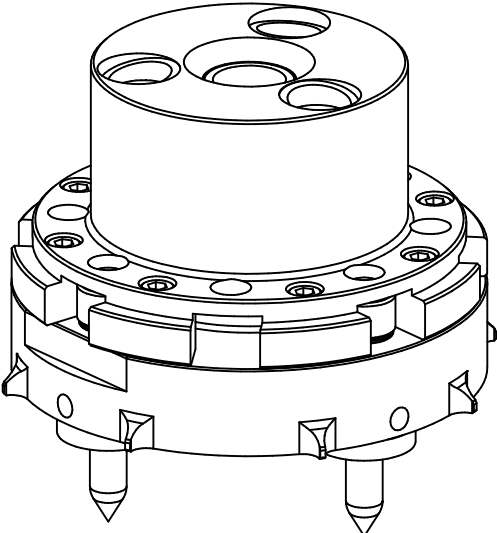
UNSCREWING



UNSCREWING MOLD INSERT



HOT MANIFOLDS

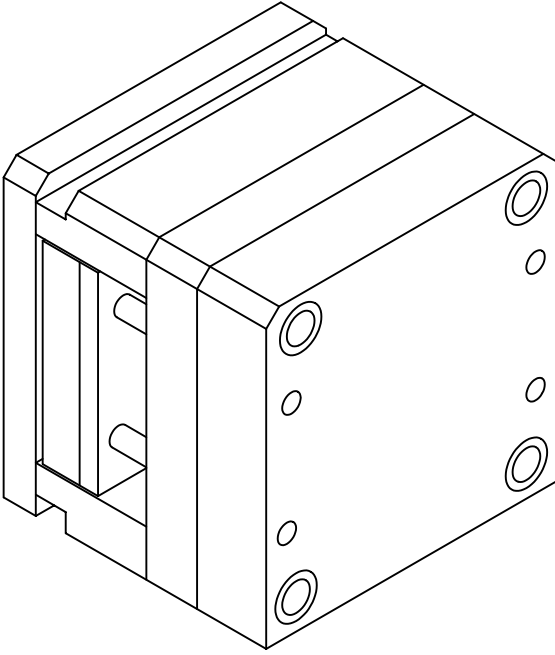


B

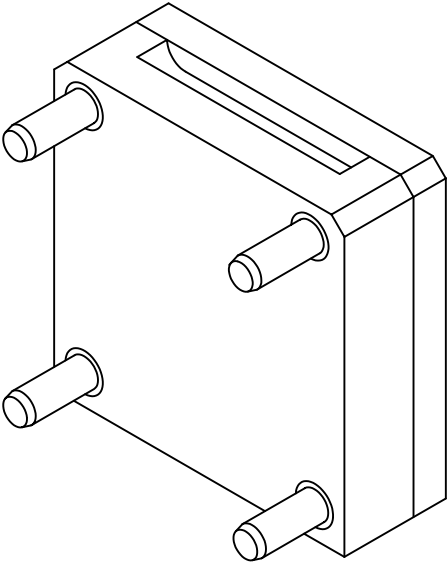
WHY MODULAR Interchangeable System?

- > Able to Be Customized**
- > Simplifies Mold Design**
- > Reduces Chase Work**
- > Reduces Mold Cost**
- > Quicker Mold Delivery**
- > Superior Master Frame Accuracy**

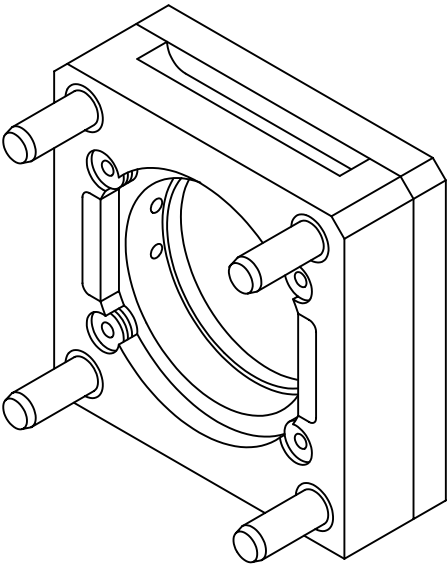
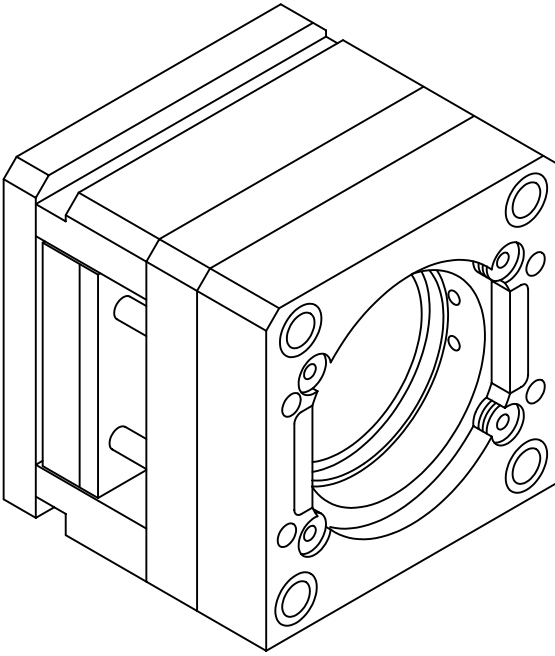
Dedicated Kit Mold Bases



Blank



Pre-Machined



Dedicated Kit Mold Base

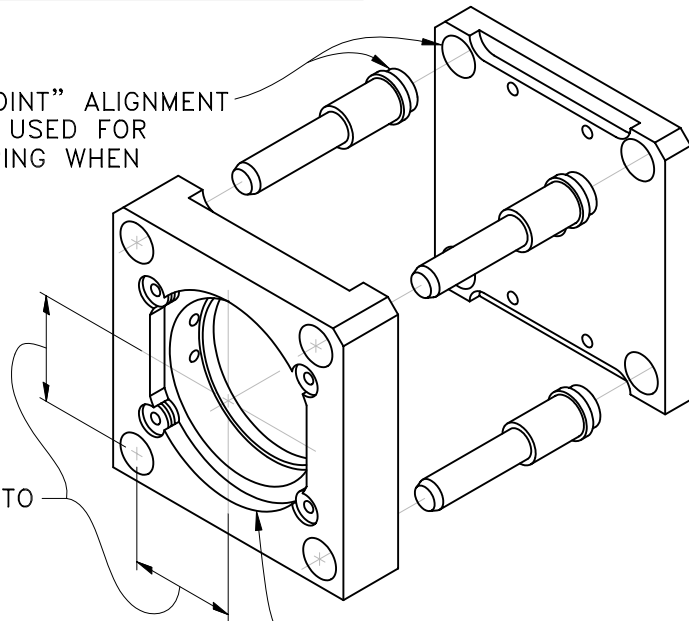
FOR TRADITIONAL MOLDBAKING

STURDY "4-POINT" ALIGNMENT
CAN ALSO BE USED FOR
PALLET FIXTURING WHEN
MACHINING

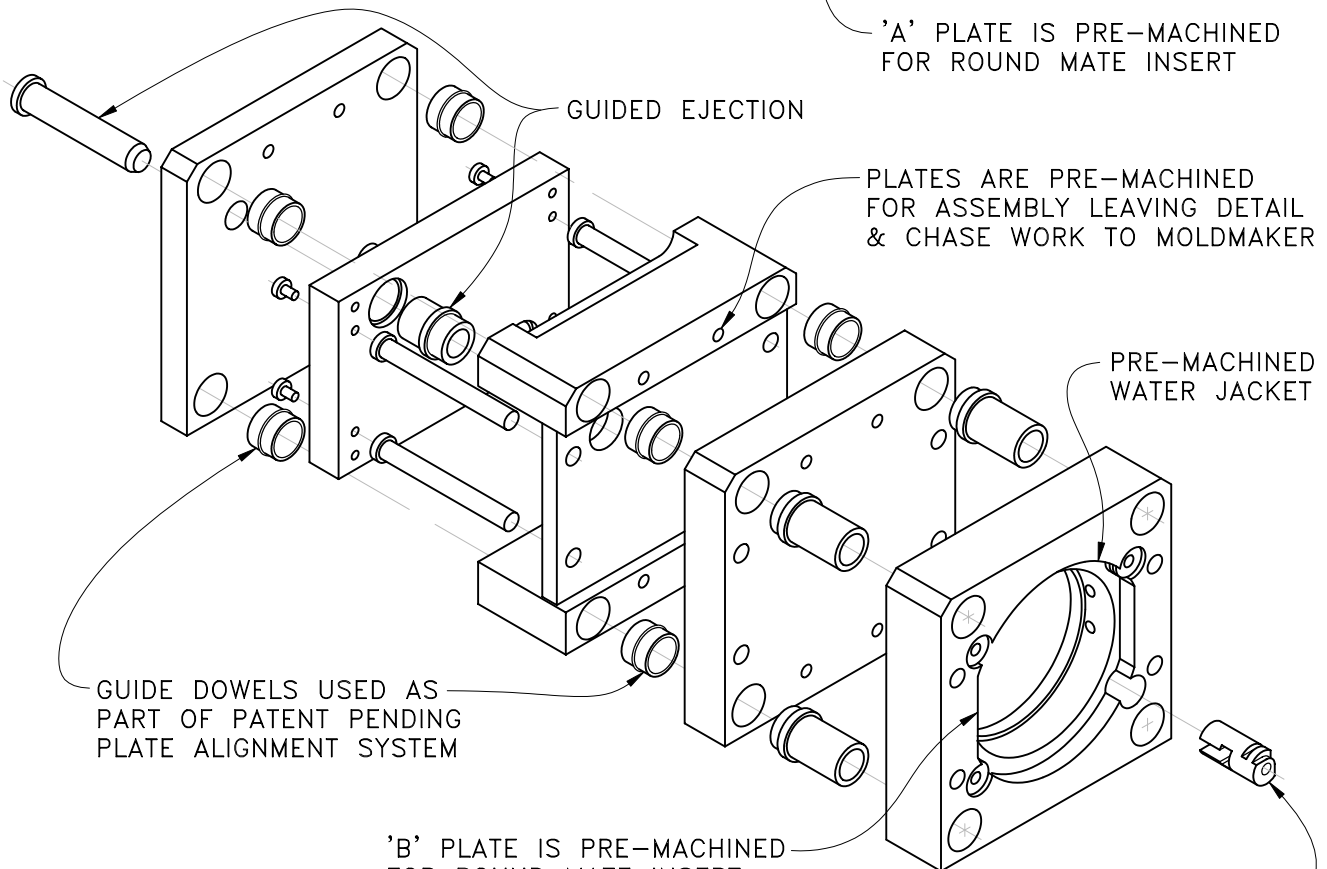
VARIOUS PLATE COMBINATIONS CAN
BE CONFIGURED BY CHANGING THE
PLACEMENT OF THE PINS, BUSHINGS
AND GUIDE DOWELS.

MOLD PLATES ARRIVE
DISASSEMBLED AND READY FOR
YOUR SPECIFIC MACHINING NEEDS.

INSERT BORE IS TRUE TO
PINS & BUSHINGS



'A' PLATE IS PRE-MACHINED
FOR ROUND MATE INSERT



GUIDED EJECTION

PLATES ARE PRE-MACHINED
FOR ASSEMBLY LEAVING DETAIL
& CHASE WORK TO MOLDBAKER

PRE-MACHINED
WATER JACKET

GUIDE DOWELS USED AS
PART OF PATENT PENDING
PLATE ALIGNMENT SYSTEM

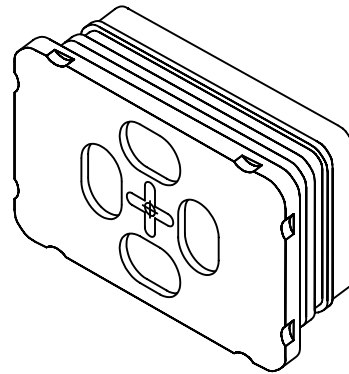
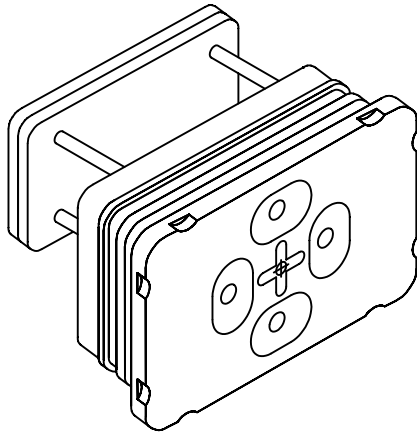
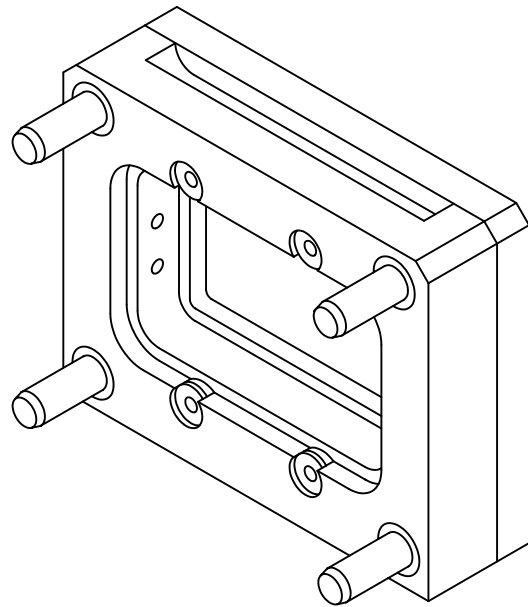
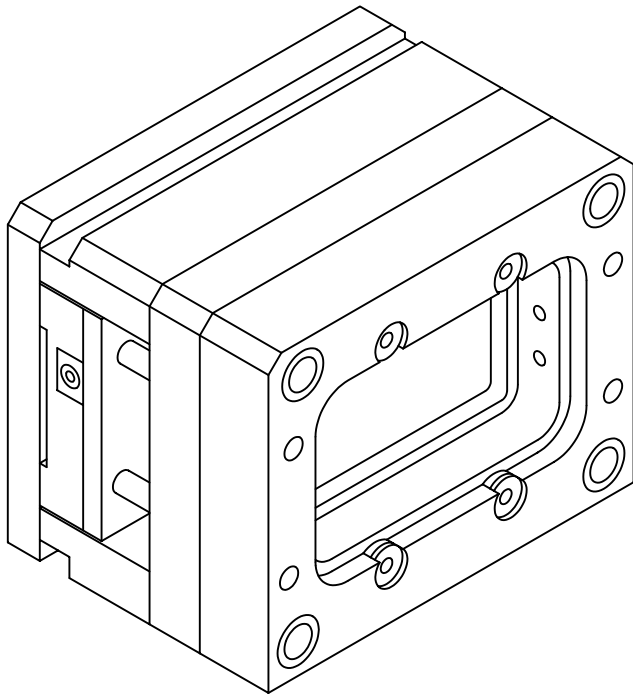
'B' PLATE IS PRE-MACHINED
FOR ROUND MATE INSERT

INSERT RETAINERS INCLUDED
WITH 'A' & 'B' PLATES

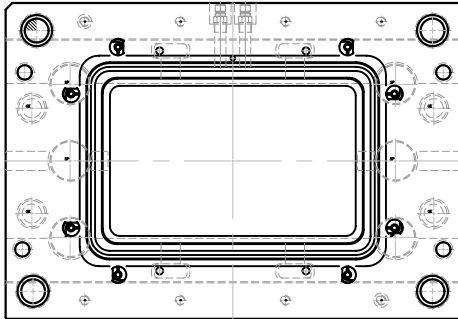
Why Dedicated Kit System?

- > Costs Less**
- > Saves Time**
- > Promotes Quick Design**
- > Can Be Precision Machined To Fit Standard Inserts**
- > "Base Machinable/Adaptable"**
- > Cavity Inserts Available From Stock**

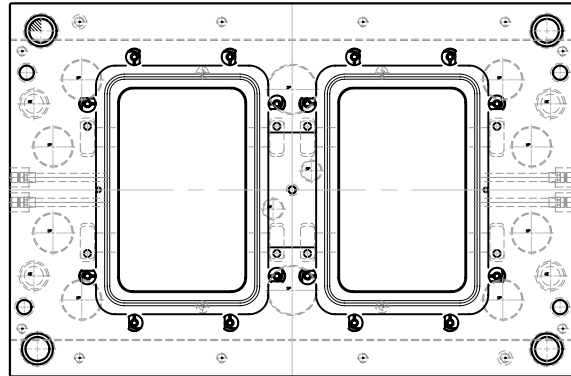
SYSTEM II



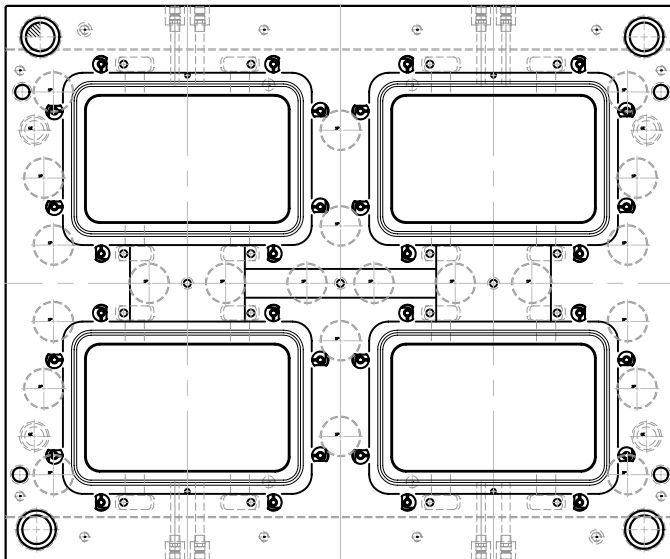
SYSTEM II



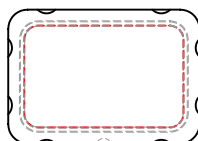
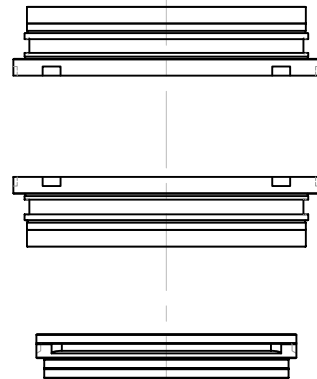
SINGLE POSITION MASTER FRAME



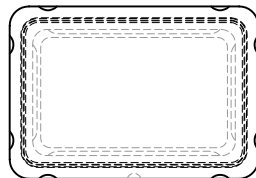
TWO POSITION MASTER FRAME



FOUR POSITION MASTER FRAME



8" X 11" INSERT



10" X 15" INSERT



12" X 18" INSERT

WHY SYSTEM II

Vertically Expandable

Meets Today's Changing Markets

No Need To Over Tool

Add Additional Cavities As Needed

**Master Frame Reusable For
Next Years Model**

Cost Comparison

to

Other Methods

**In the following example
Round Mate is**

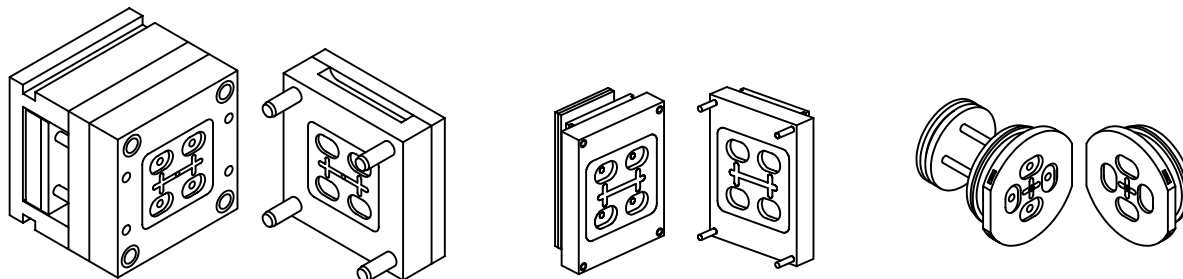
**28% Faster Delivery
28% Lower Cost**

Than dedicated tooling

**22% Faster Delivery
16% Lower Cost**

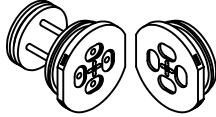
Than A Unit Die

COST COMPARISON

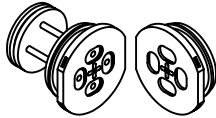


	STANDARD MOLD		6 X 7 UNIT DIE		8" ROUND MATE	
	Hours	Mat'ls	Hours	Mat'ls	Hours	Mat'ls
Design	60		50		35	
Mold Base		1,685		413		--
Chase	15	20	8		--	--
Support P.	6	40	3	40	3	70
Ej. Chase	6		2		2	
Water Lines	6		6		--	
Base Pockets	15		15		--	
Detail						
Cav. Blocks	12	75	12	75	5	1127
Detail						
EDM & Polish	150	300	150	300	150	300
Insert Water	8		8		--	
Sub Contract						
Heat Treat	1	50	1	75	1	75
Finish	12		12		12	
Total Hours	291	2,170	267	903	208	1,572
Shop Rate	x 50		x 50		x 50	
Materials	14,550		13,350		10,400	
	2,170		903		1,572	
Total Cost	\$16,720		\$14,253		\$11,972	

ROUND MATE® Systems

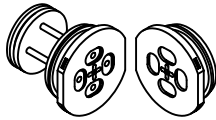


\$11,972



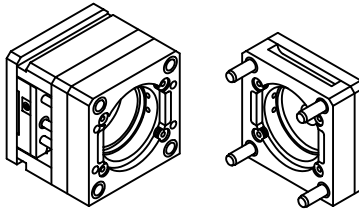
3 MOLDS

\$11,972



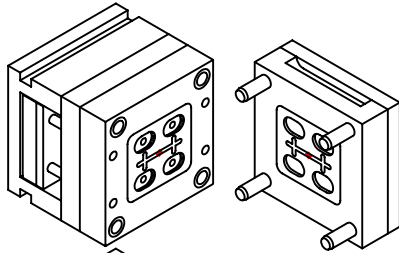
\$11,972

**8" MASTER
FRAME**

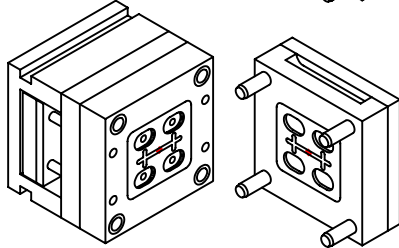


+ \$11,138
\$47,054

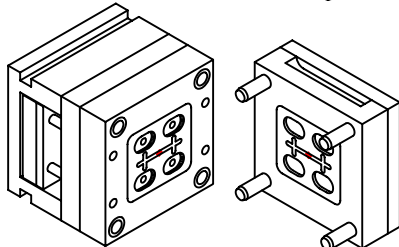
PAY BACK



\$16,720



\$16,720



+ \$16,720
\$50,160

**Savings are even greater
when looking at**

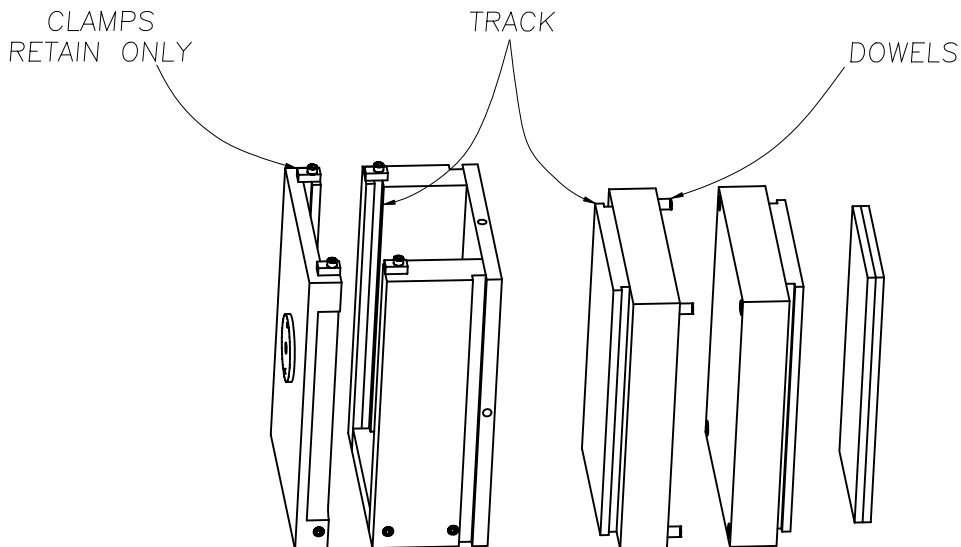
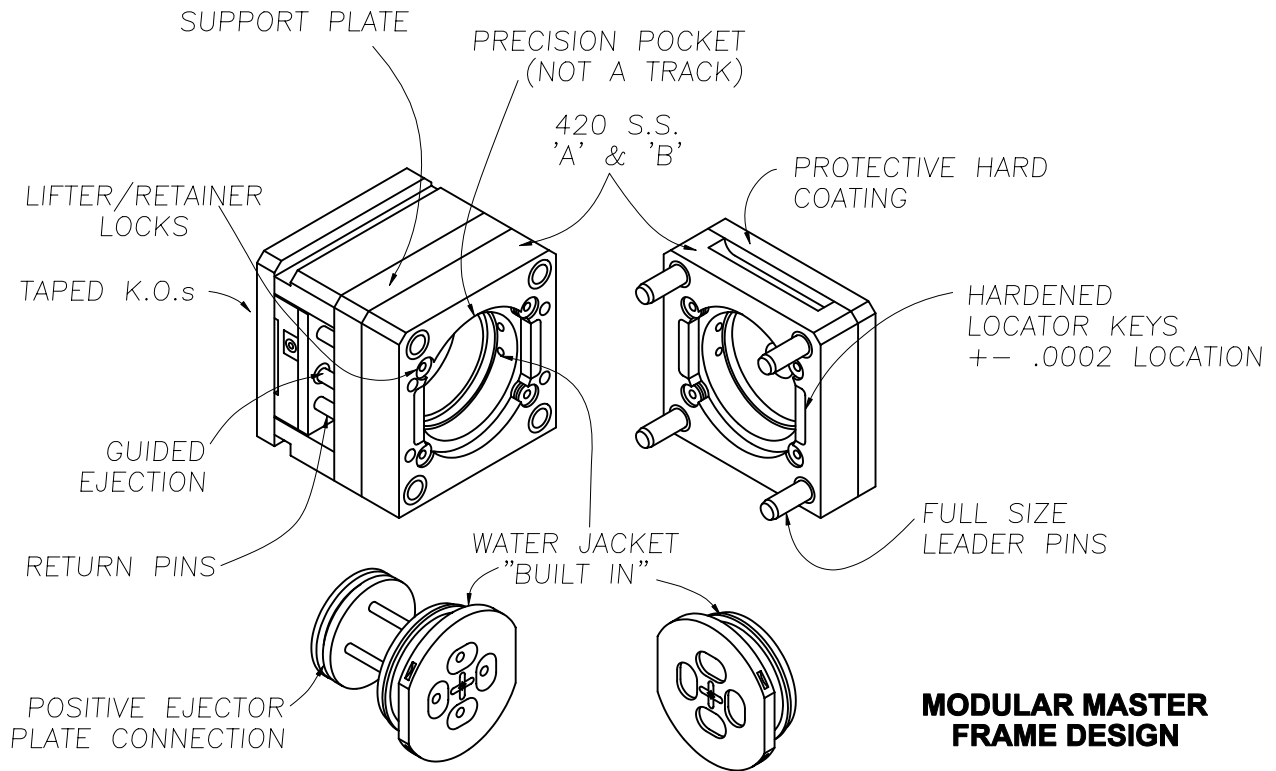
Hot Runner Gating

3 Plate Gating

Stripper Plate Ejection

Unscrewing

ROUND MATE® Systems



ADVANTAGES OVER SIDE LOAD SYSTEMS

- > No Ejector Pin Length Variation**
- > Simple Refitting of Heat Treatable Inserts**
 - > Hot Sprues and Manifolds are Easy**
 - > Precise "A & B" Alignment/Accuracy**
 - > Sleeve Ejection Substantial & Precise**
 - > Chase Work Includes:**

Guided Ejection	Precision 360 Pocket
Water Cooling	Hardened Gibs
Tapped K.O. Blocks	Leader Pins & Bushings
- > Insert Extraction From Master Frame**
- > Protective Hard Coating "Standard"**