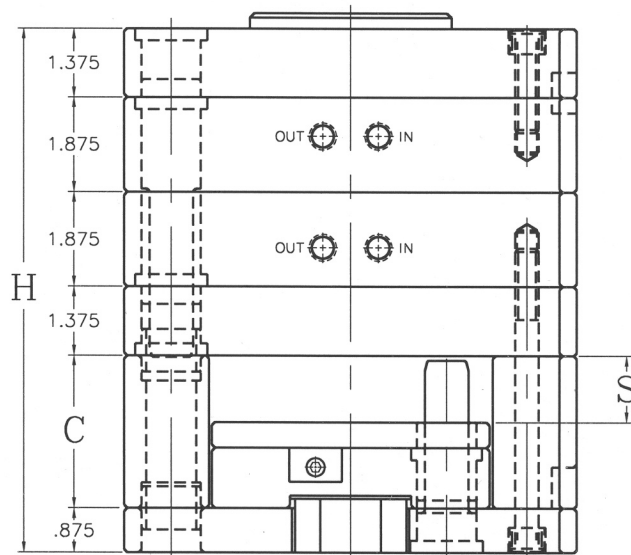
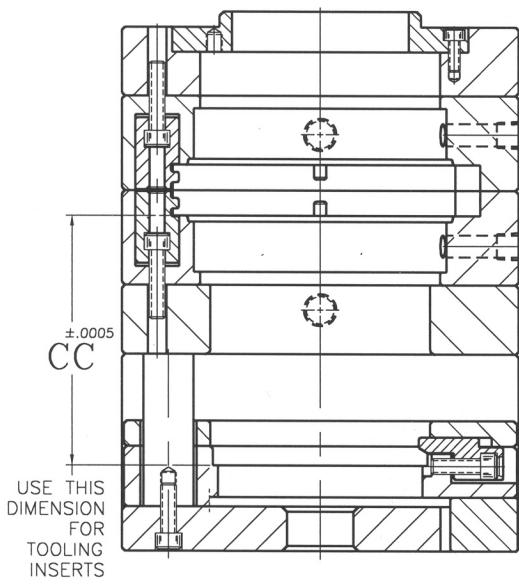
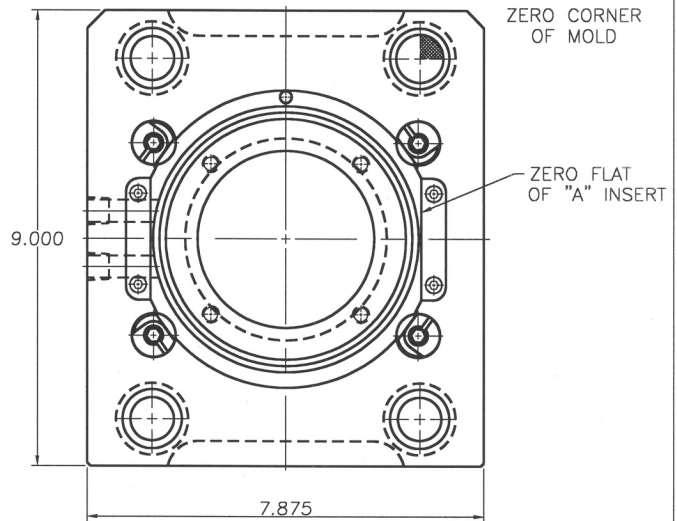
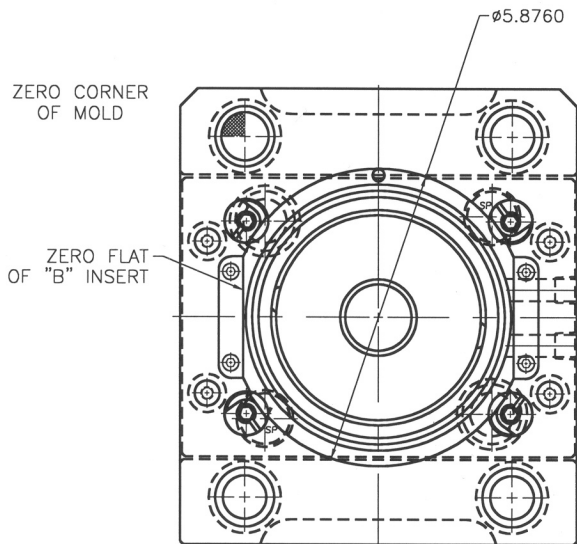


Round Mate Single Position

6" & 8" Master Frames & Inserts

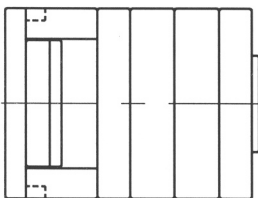


Revision: 2/2012



MASTER FRAME COMES INSTALLED WITH RMC-6020 AND RMC-6038 UNLESS OTHERWISE NOTED

STANDARD MASTER FRAME

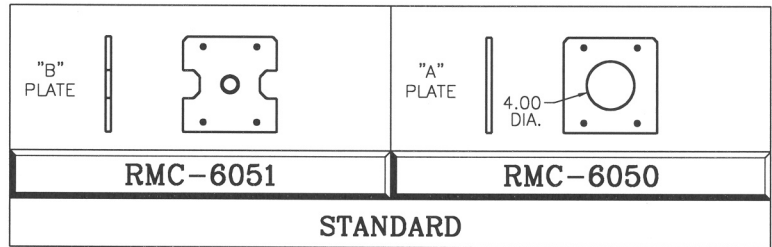
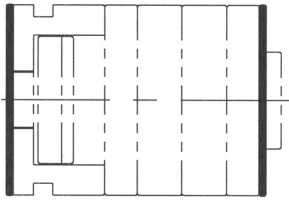


STYLE #	C	CC	H	S
RMF-0613	3	4.9375	10.375	1.312
RMF-0614	4	5.9375	11.375	2.312

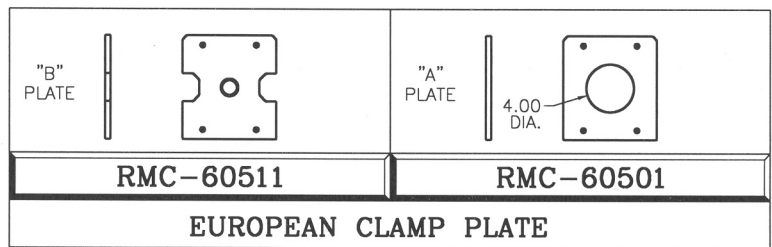
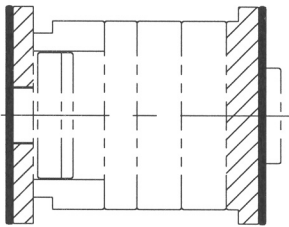
6" Standard Frame Components

ROUND MATE®

INSULATION BOARD

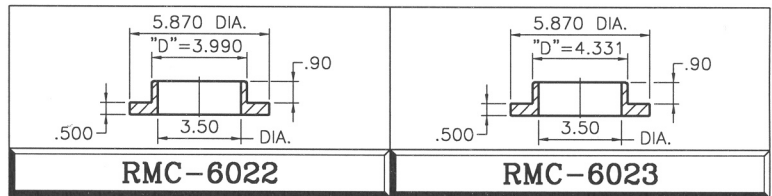
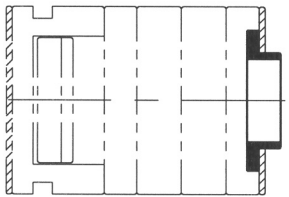


OPTIONAL



EXTENDED LOCATING RING

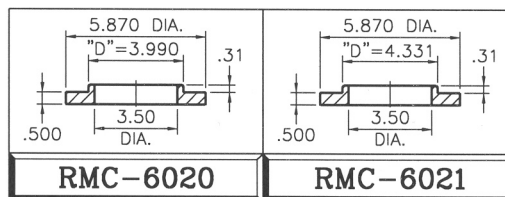
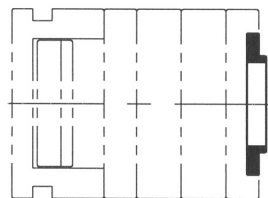
NEED ONLY IF INSULATOR BOARD IS USED



MOUNTING SCREWS INCLUDED

MAT'L 4140

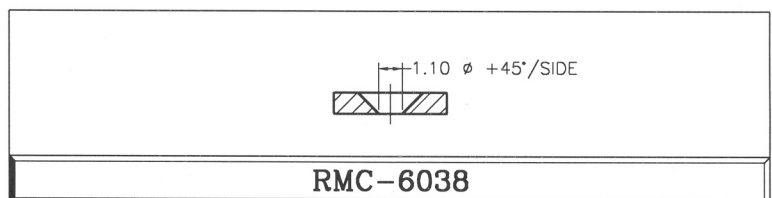
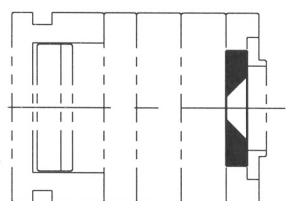
LOCATING RING



MOUNTING SCREWS INCLUDED

MAT'L 4140

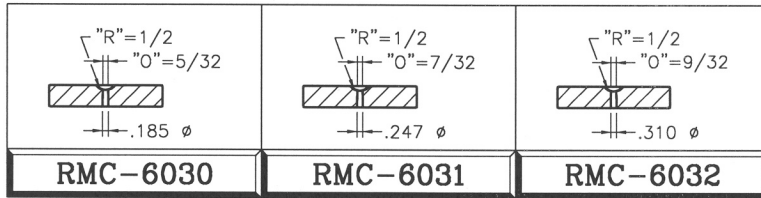
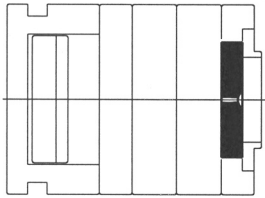
EXTENDED NOZZLE DISC



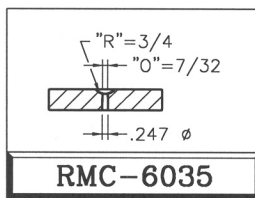
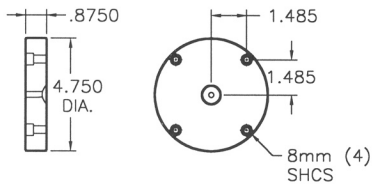
MOUNTING SCREWS INCLUDED

MAT'L 6150 H.T.

SPRUE BUSHING DISC

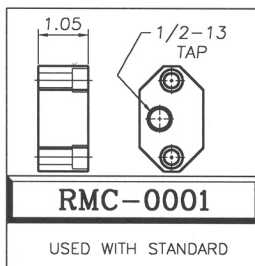
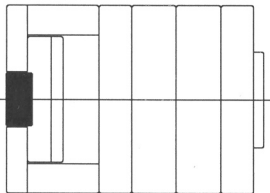


SPRUE BUSHING DISC AND EXTENDED NOZZLE DISC BOLT INTO MASTER FRAME WITH BOLT PATTERN SHOWN



MOUNTING SCREWS INCLUDED

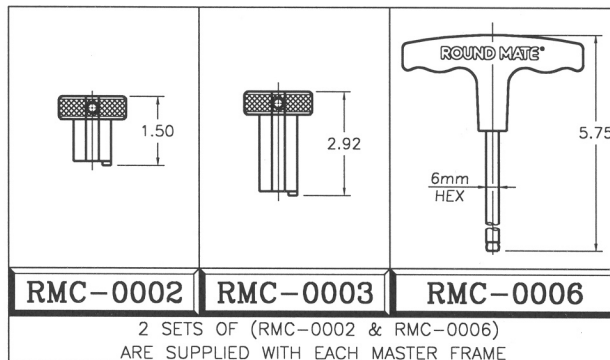
EJECTOR K.O. MOUNTING BLOCK



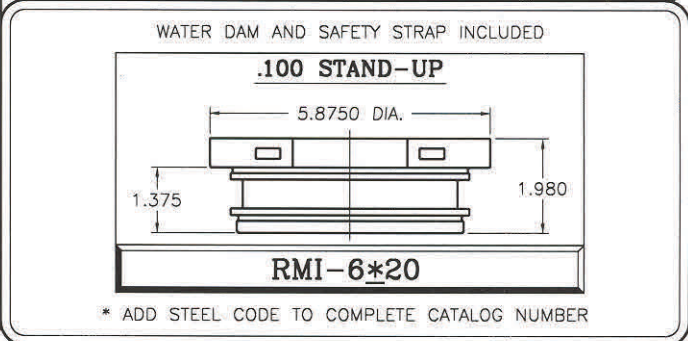
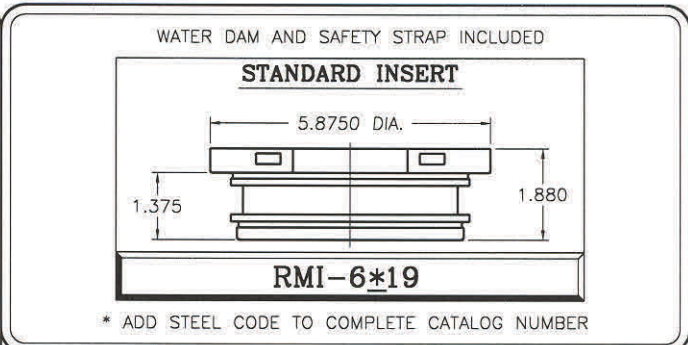
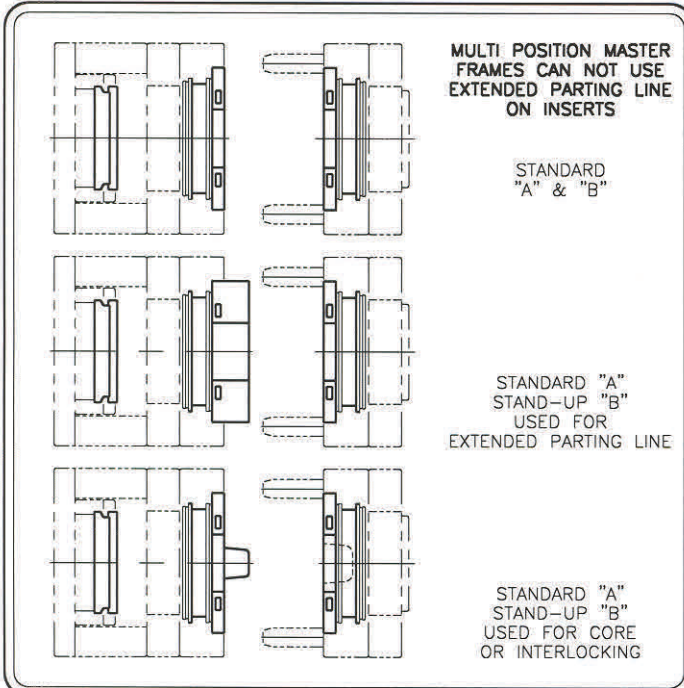
PACKAGE OF 2 MAT'L 4140

2 K.O. BLOCKS INCLUDED WITH MASTER FRAME

RETAINER/LIFTER - EJECTOR RETAINER WRENCH



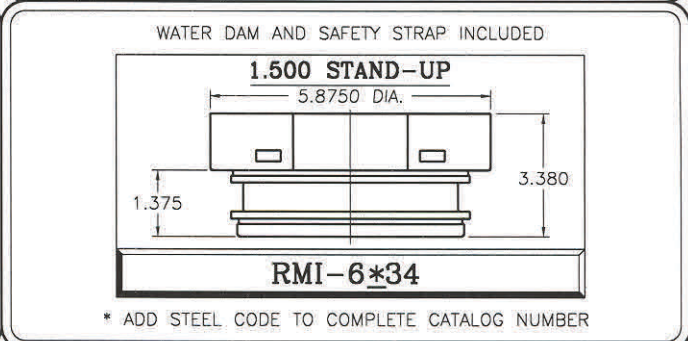
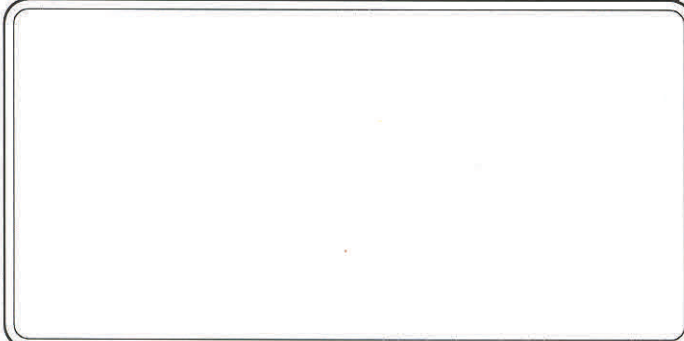
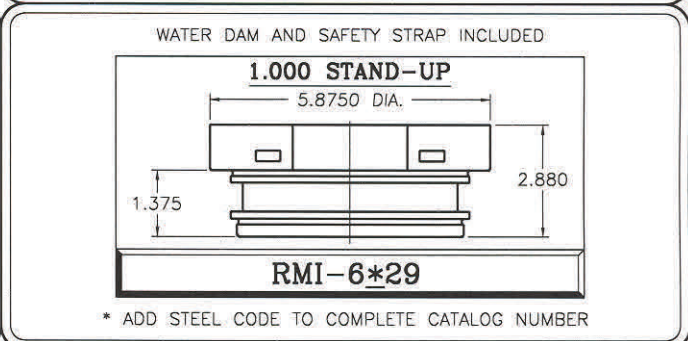
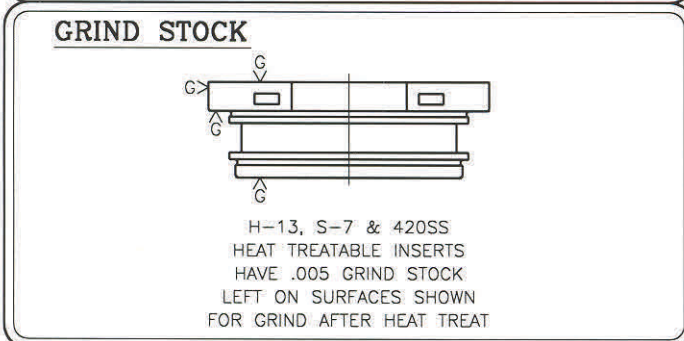
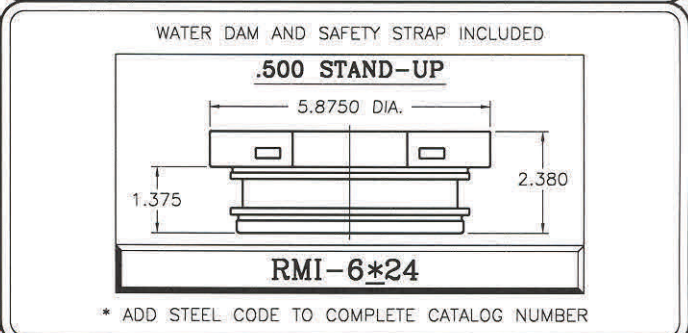
ROUND MATE®



AVAILABLE STEEL

* CODE	STEEL
3	P-20 PRE-HARD 32/34 Rc
4	S-7 ANNEALED
5	H-13 ANNEALED
6	420SS ANNEALED
8	420SS PRE-HARD 32/35 Rc

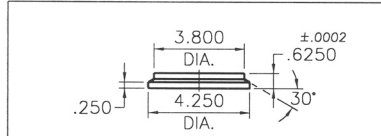
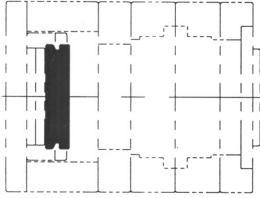
* USE CODE NUMBER ABOVE TO COMPLETE CATALOG NUMBER FOR INSERTS.



6" Standard Insert Components

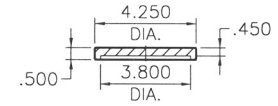
ROUND MATE®

EJECTOR PLATE ASSEMBLY



RMC-6003

EJECTOR PLATE

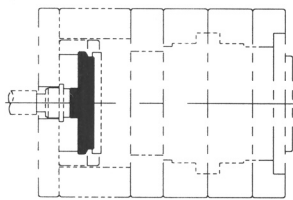


RMC-6002

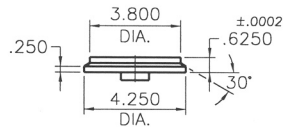
EJECTOR RETAINER PLATE

MAT'L 4140

QUICK CONNECT EJECTOR PLATE

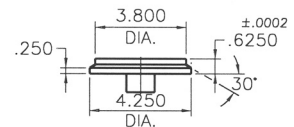


OPTIONAL



RMC-6006

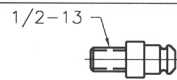
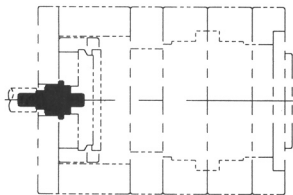
FOR USE WITH **SINGLE POSITION** MASTER FRAME



RMC-60061

MAT'L 4140

QUICK EJECTOR CONNECT

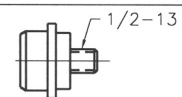


MALE
END

MOUNTS TO MOLDING
MACHINE K.O. ROD

RMC-0015

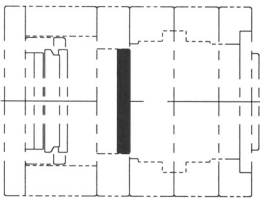
FEMALE
END



MOUNTS TO INSERT SET
EJECTOR PLATE

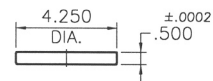
RMC-0016

CORE RETAINER PLATES



OPTIONAL

ATTACHES TO "B"
INSERT TO RETAIN
CORE PINS

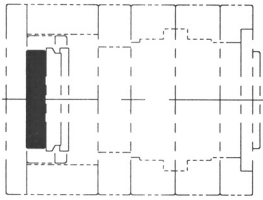


RMC-6005

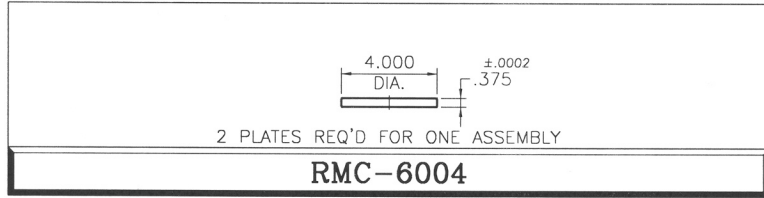
FOR USE WITH **SINGLE POSITION** MASTER FRAME

MAT'L 4140

SLEEVE EJECTION CORE RETAINER PLATES



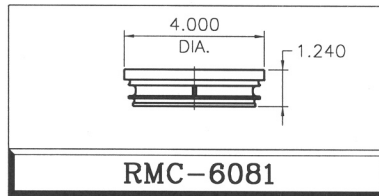
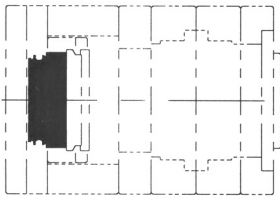
OPTIONAL



MAT'L 4140

WATER MANIFOLD ASSEMBLY

FOR USE WITH WATER OPTION MASTER FRAME

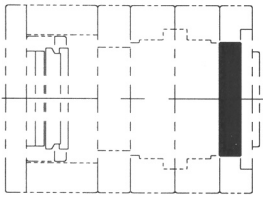


WATER MANIFOLD PLATE
MAT'L 420 SS

RMC-6004 IS USED WITH
RMC-6081 TO MAKE THE
WATER MANIFOLD ASSEMBLY

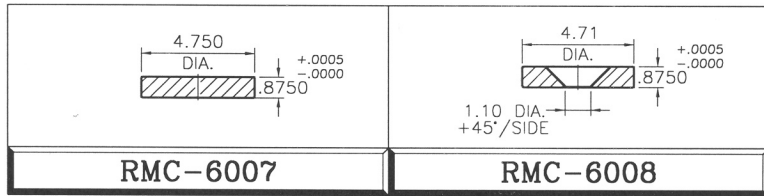
TOP CLAMP PLATE

ATTACHES TO "A"
INSERT FOR CUSTOM



OPTIONAL

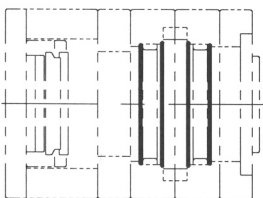
REMOVE SPRUE
BUSHING DISC/EXT.
NOZZLE DISC FROM
MASTER FRAME







FOR USE WITH **SINGLE POSITION** MASTER FRAME

MAT'L 4140

O-RINGS



<p>O-RING SET FOR 6" INSERT</p>  <p>BUNA-N</p> <p>RMC-6015</p> <p>2 SETS ARE INCLUDED WITH INSERT SET</p>	<p>SET INCLUDES 2 O-RINGS FOR ONE INSERT</p>	<p>O-RING SET FOR 6" INSERT</p>  <p>VITON - HI TEMP</p> <p>RMC-6017</p> <p>ARE AVAILABLE UPON REQUEST</p>	<p>SET INCLUDES 2 O-RINGS FOR ONE INSERT</p>
---	--	---	--

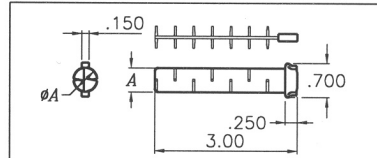
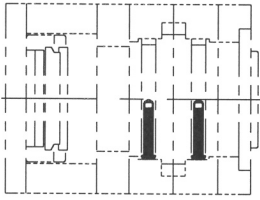
<p>O-RING SET FOR 6" INSERT</p>  <p>BUNA-N</p> <p>RMC-6016</p> <p>ARE AVAILABLE UPON REQUEST</p>	<p>PACKAGE OF 10 O-RING SETS</p>	<p>O-RING SET FOR 6" INSERT</p>  <p>VITON - HI TEMP</p> <p>RMC-6018</p> <p>ARE AVAILABLE UPON REQUEST</p>	<p>PACKAGE OF 4 O-RING SETS</p>
--	--	---	---

6" Standard Insert Components

ROUND MATE®

WATER BAFFLE (Packs of 10)

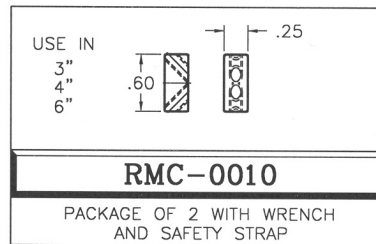
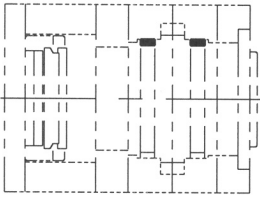
NYLON PLASTIC, NOT FOR HIGH TEMPERATURE APPLICATIONS



A DIM.	FOR USE WITH 3", 4" AND 6" ROUND MATE INSERTS
.312	RMC-0080
.500	RMC-0081

WATER DAM

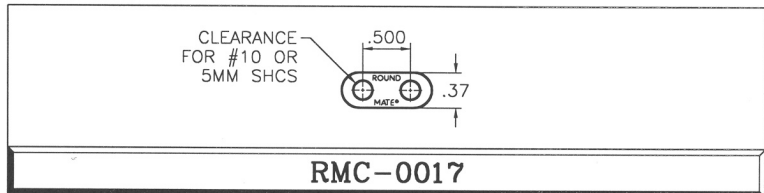
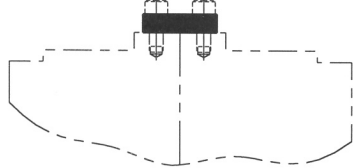
1 SUPPLIED WITH EACH INSERT



RMC-0010
PACKAGE OF 2 WITH WRENCH AND SAFETY STRAP
MAT'L 416SS

SAFETY STRAP

1 SUPPLIED WITH EACH INSERT

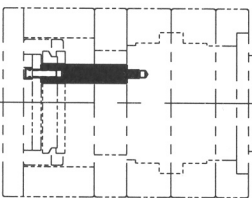


PACKAGE OF 10

MAT'L NYLON

SLEEVE EJECTION SUPPORT PILLAR

OPTIONAL



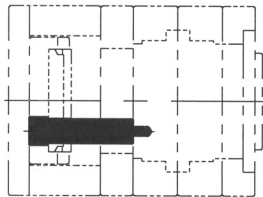
MOLD MAKER MAY TRIM SUPPORT PILLARS TO LENGTH FOR CUSTOM APPLICATIONS

SET SCREW INCLUDED

5/8 HEX	5/16-18
"L"=3.1270	"L"=4.6270
RMC-0022	RMC-0024
"L"=3.6270	"L"=5.1270
RMC-0023	RMC-0025
	"L"=5.6270
	RMC-0026

MAT'L 1144

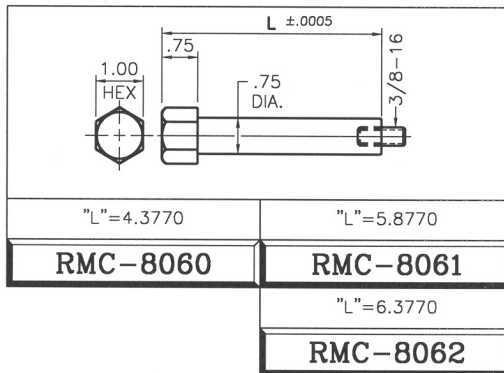
SUPPORT PILLAR



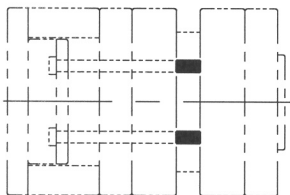
MOLD MAKER MAY TRIM
SUPPORT PILLARS TO
LENGTH FOR CUSTOM
APPLICATIONS

CUSTOM LENGTHS ARE
AVAILABLE, CALL FOR QUOTE

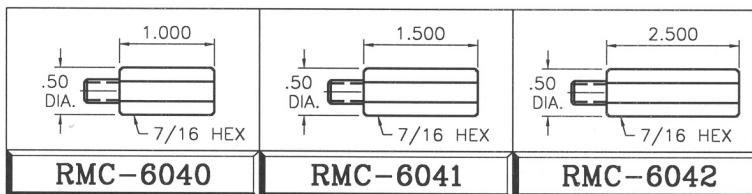
SET SCREW INCLUDED



RETURN PIN EXTENSIONS

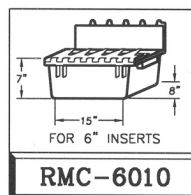
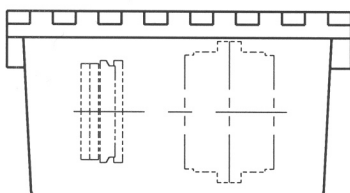


OPTIONAL

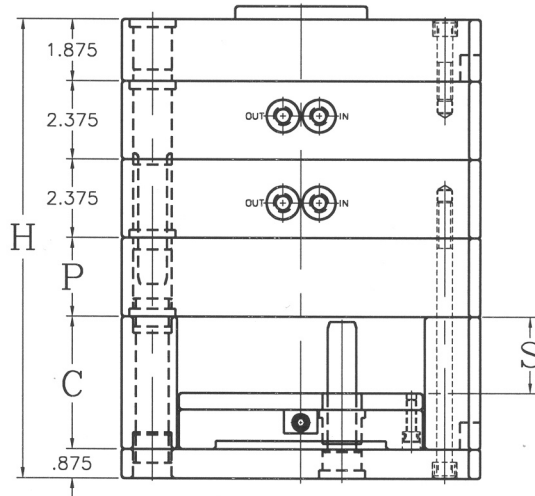
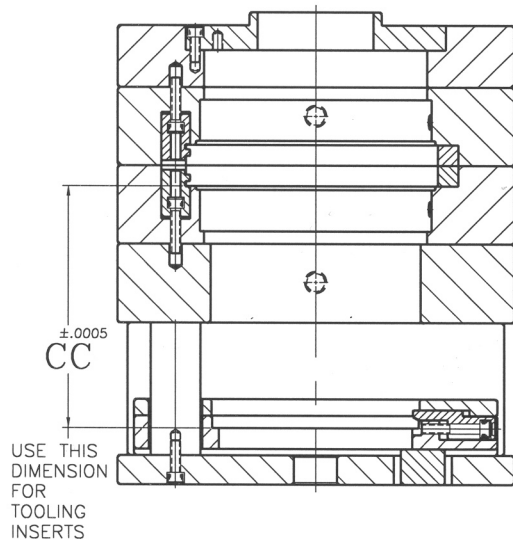
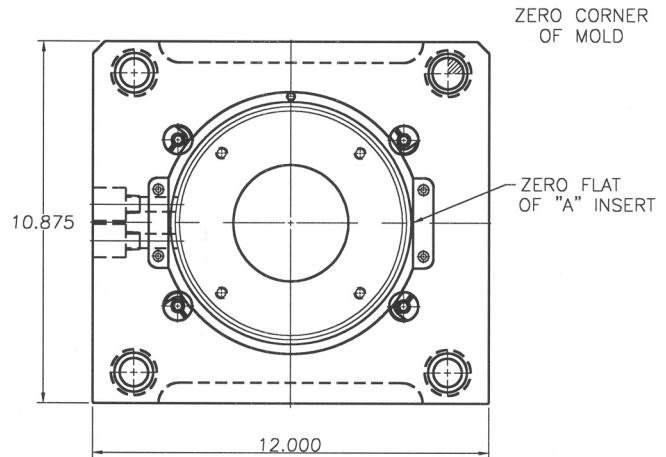
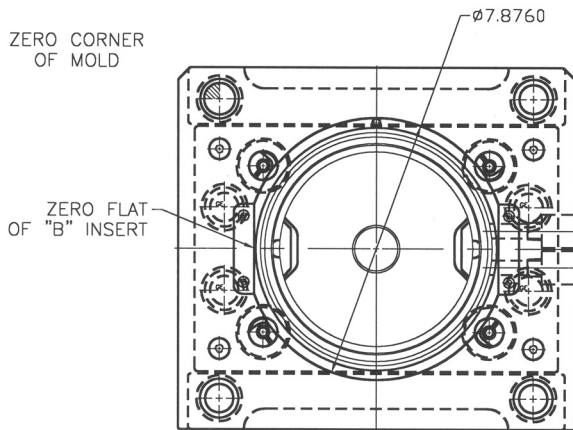


MAT'L 4142

FITTED STORAGE BOX

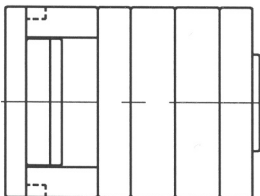


ROUND MATE®



MASTER FRAME COMES INSTALLED WITH RMC-8020 AND RMC-8038 UNLESS OTHERWISE NOTED

STANDARD MASTER FRAME



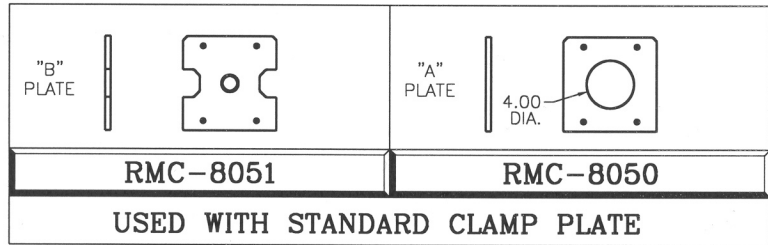
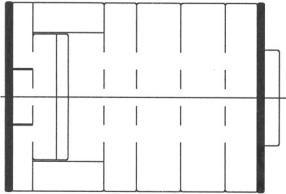
STYLE #	C	CC	H	P	S
RMF-0813	3	5.3125	11.875	1.375	1.312
RMF-0814	4	7.3125	13.875	2.375	2.312
RMF-0815	5	8.3125	14.875	2.375	3.312

8" Standard Frame Components

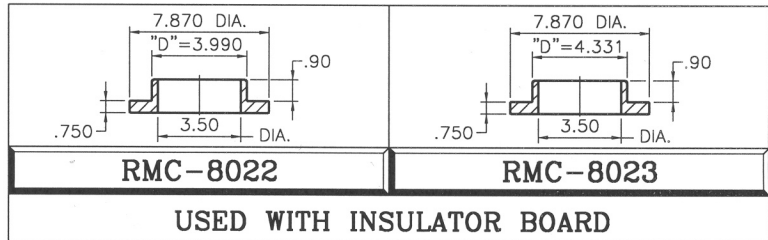
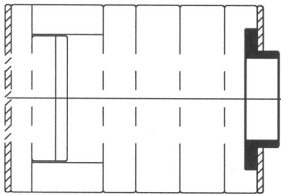
ROUND MATE®

INSULATOR BOARD

OPTIONAL



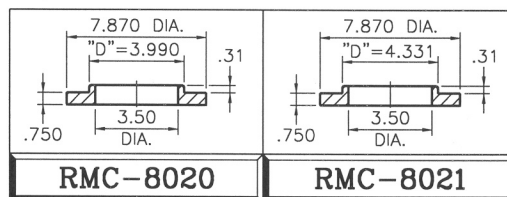
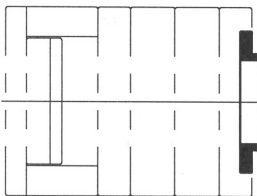
EXTENDED LOCATING RING



MOUNTING SCREWS INCLUDED

MAT'L 4140

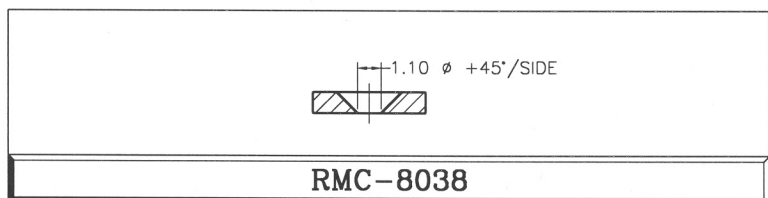
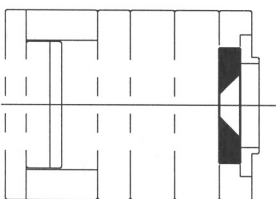
LOCATING RING



MOUNTING SCREWS INCLUDED

MAT'L 4140

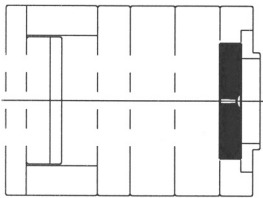
EXTENDED NOZZLE DISC



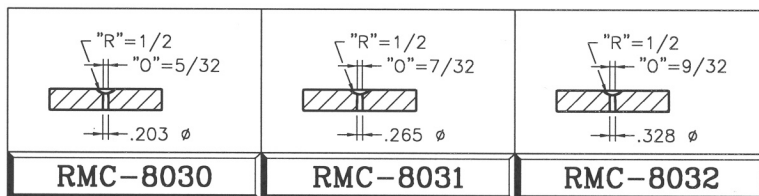
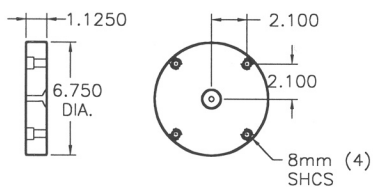
MOUNTING SCREWS INCLUDED

MAT'L 6150 H.T.

SPRUE BUSHING DISC



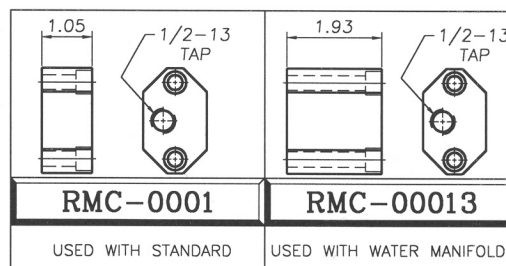
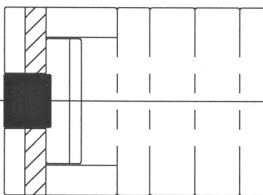
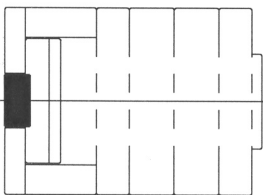
SPRUE BUSHING DISC AND EXTENDED NOZZLE DISC BOLT INTO MASTER FRAME WITH BOLT PATTERN SHOWN



MOUNTING SCREWS INCLUDED

MAT'L 6150 H.T.

EJECTOR K.O. MOUNTING BLOCK

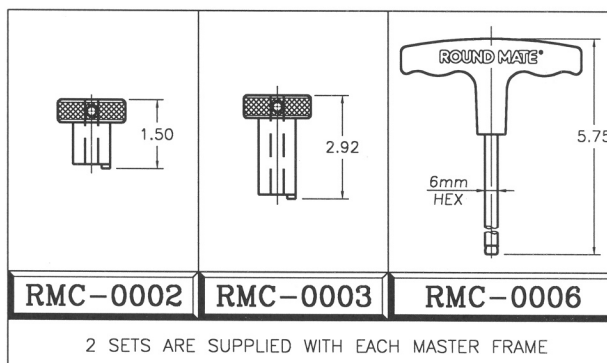


USED WITH STANDARD

USED WITH WATER MANIFOLD

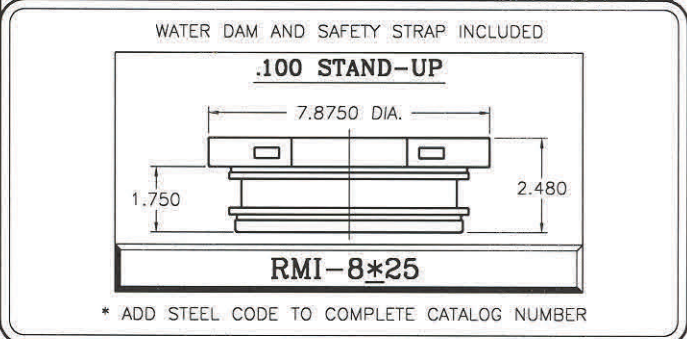
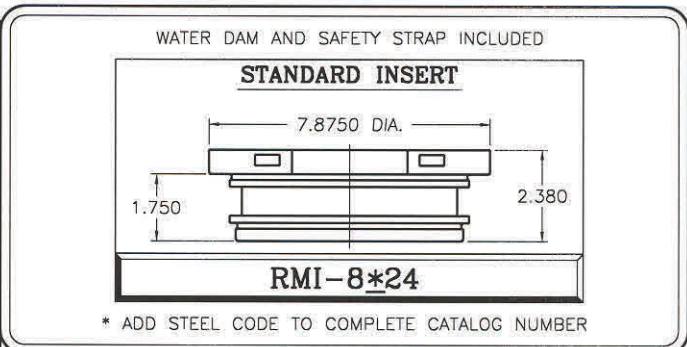
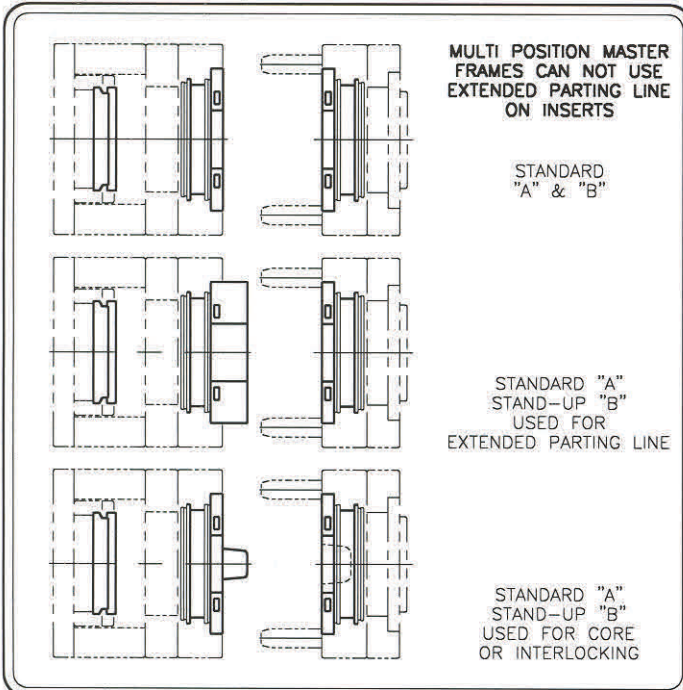
PACKAGE OF 2 2 K.O. BLOCKS INCLUDED WITH MASTER FRAME MAT'L 4140

RETAINER/LIFTER - EJECTOR RETAINER WRENCH



2 SETS ARE SUPPLIED WITH EACH MASTER FRAME

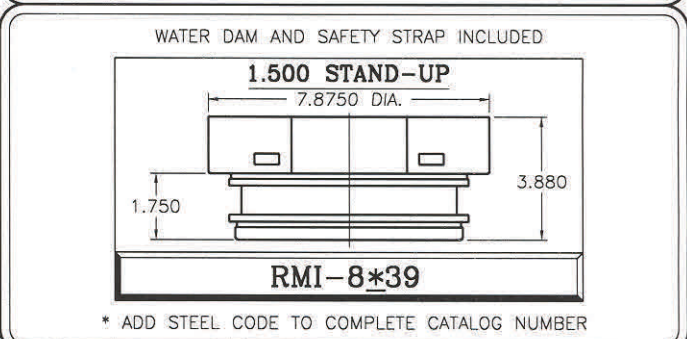
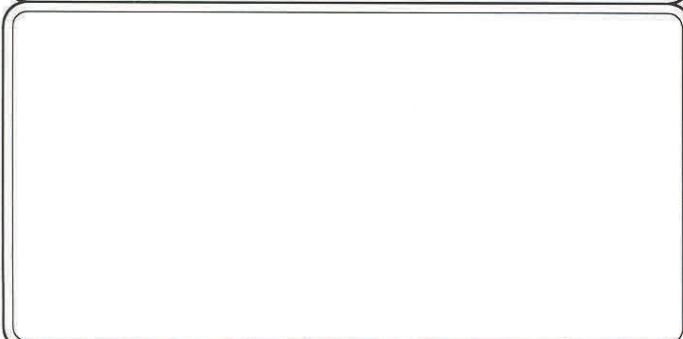
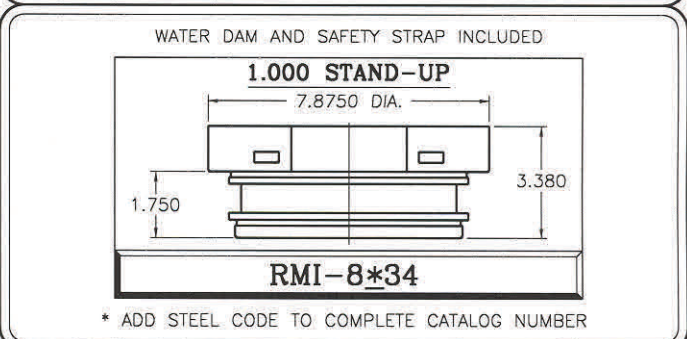
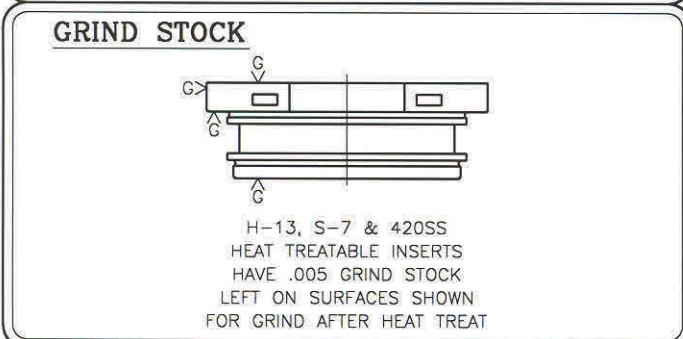
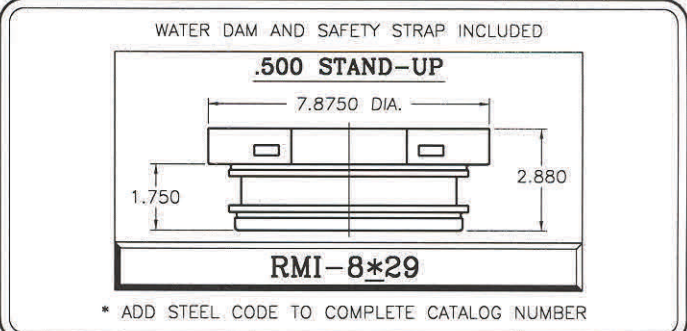
ROUND MATE®



AVAILABLE STEEL

* CODE	STEEL
3	P-20 PRE-HARD 32/34 Rc
4	S-7 ANNEALED
5	H-13 ANNEALED
6	420SS ANNEALED
8	420SS PRE-HARD 32/35 Rc

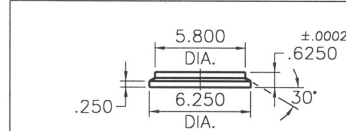
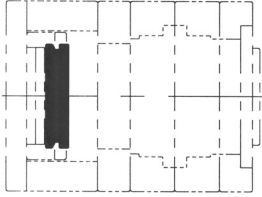
* USE CODE NUMBER ABOVE TO COMPLETE CATALOG NUMBER FOR INSERTS.



8" Standard Insert Components

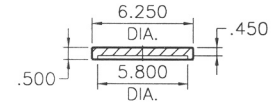
ROUND MATE®

EJECTOR PLATE ASSEMBLY



RMC-8003

EJECTOR PLATE

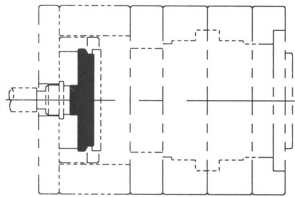


RMC-8002

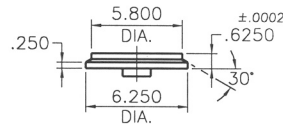
EJECTOR RETAINER PLATE

MAT'L 4140

QUICK CONNECT EJECTOR PLATE



OPTIONAL

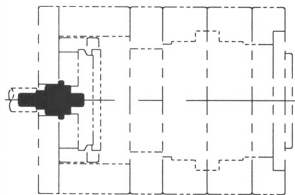


RMC-8006

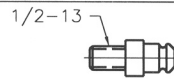
FOR USE WITH **SINGLE POSITION** MASTER FRAME

MAT'L 4140

QUICK EJECTOR CONNECT



OPTIONAL

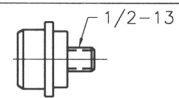


MALE
END

MOUNTS TO MOLDING
MACHINE K.O. ROD

RMC-0015

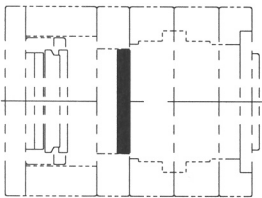
FEMALE
END



MOUNTS TO INSERT SET
EJECTOR PLATE

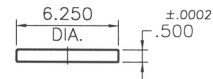
RMC-0016

CORE RETAINER PLATES



OPTIONAL

ATTACHES TO "B"
INSERT TO RETAIN
CORE PINS

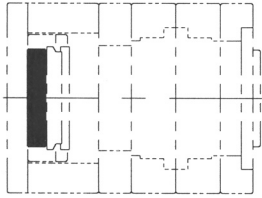


RMC-8005

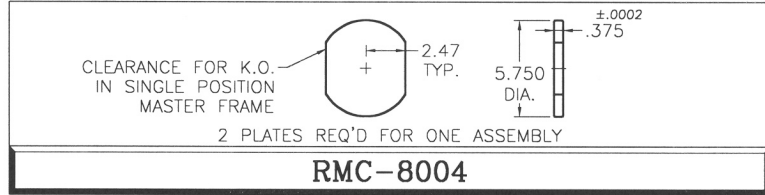
FOR USE WITH **SINGLE POSITION** MASTER FRAME

MAT'L 4140

SLEEVE EJECTION CORE RETAINER PLATES

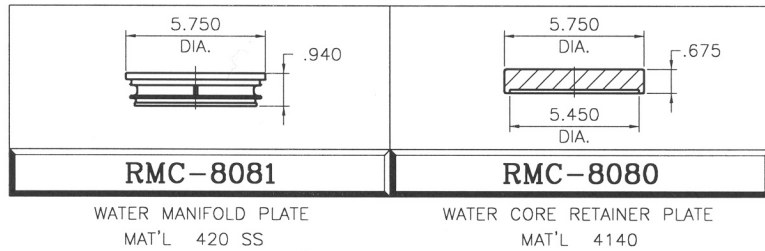
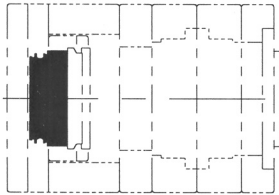


OPTIONAL



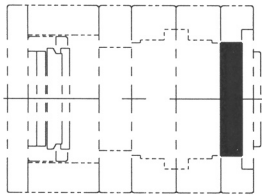
WATER MANIFOLD ASSEMBLY

FOR USE WITH WATER OPTION MASTER FRAME



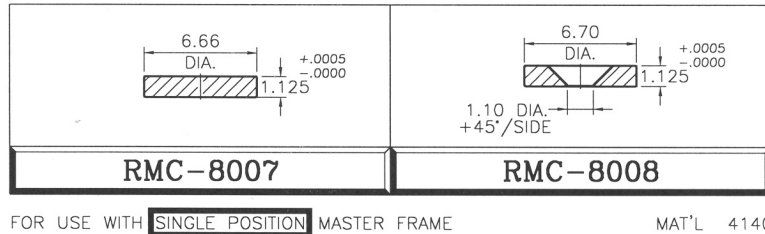
TOP CLAMP PLATE

ATTACHES TO "A" INSERT FOR CUSTOM

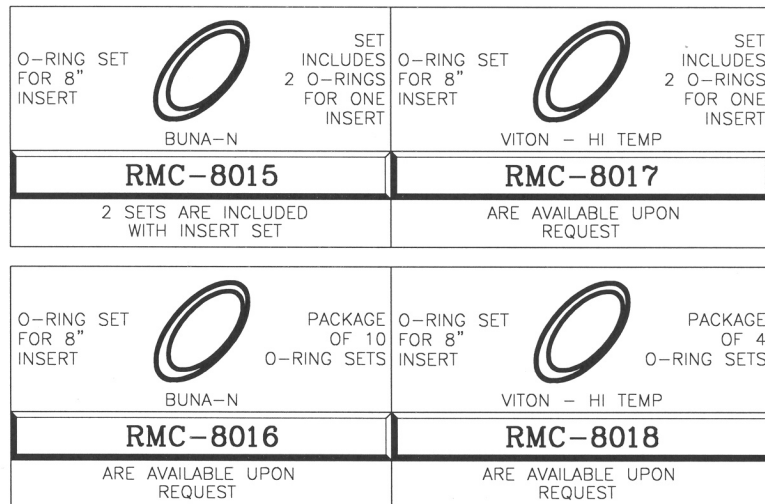
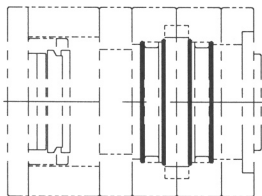


OPTIONAL

REMOVE SPRUE BUSHING DISC/EXT. NOZZLE DISC FROM MASTER FRAME



O-RINGS

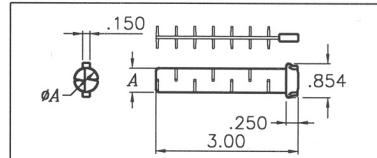
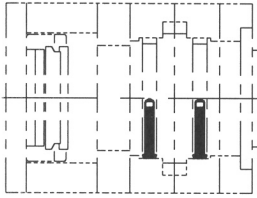


8" Standard Insert Components

ROUND MATE®

WATER BAFFLE (Packs of 10)

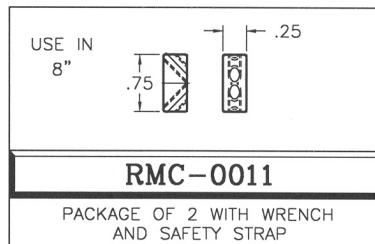
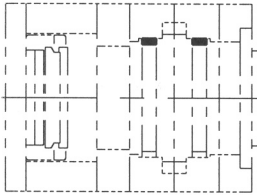
NYLON PLASTIC, NOT FOR HIGH TEMPERATURE APPLICATIONS



A DIM.	FOR USE WITH 8" ROUND MATE INSERT
.312	RMC-0085
.500	RMC-0086

WATER DAM

1 SUPPLIED WITH EACH INSERT



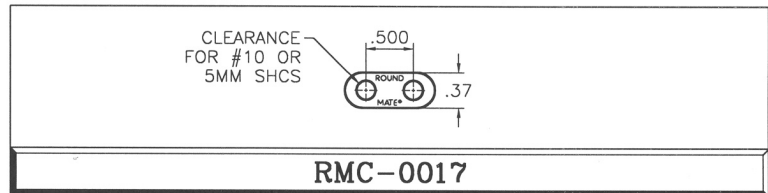
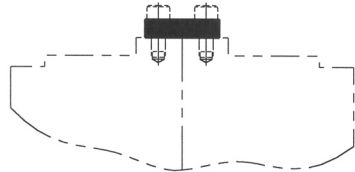
RMC-0011

PACKAGE OF 2 WITH WRENCH AND SAFETY STRAP

MAT'L 416SS

SAFETY STRAP

1 SUPPLIED WITH EACH INSERT



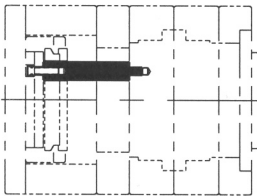
RMC-0017

PACKAGE OF 10

MAT'L NYLON

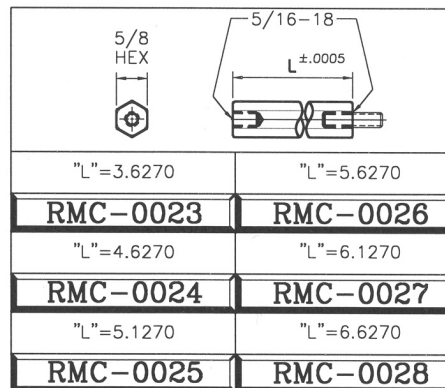
SLEEVE EJECTION SUPPORT PILLAR

OPTIONAL



MOLD MAKER MAY TRIM SUPPORT PILLARS TO LENGTH FOR CUSTOM APPLICATIONS

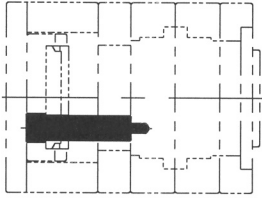
SET SCREW INCLUDED



"L"=3.6270	"L"=5.6270
RMC-0023	RMC-0026
"L"=4.6270	"L"=6.1270
RMC-0024	RMC-0027
"L"=5.1270	"L"=6.6270
RMC-0025	RMC-0028

MAT'L 1144

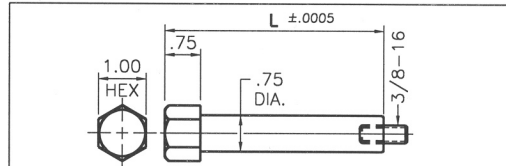
SUPPORT PILLAR



MOLD MAKER MAY TRIM
SUPPORT PILLARS TO
LENGTH FOR CUSTOM
APPLICATIONS

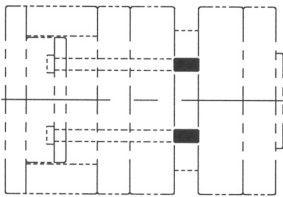
CUSTOM LENGTHS ARE
AVAILABLE, CALL FOR QUOTE

SET SCREW INCLUDED



"L"=5.8770	"L"=6.8770
RMC-8061	RMC-8063
"L"=6.3770	"L"=7.3770
RMC-8062	RMC-8064

RETURN PIN EXTENSIONS



OPTIONAL

RMC-8040	RMC-8041	RMC-8042

MAT'L 4142

FITTED STORAGE BOX

