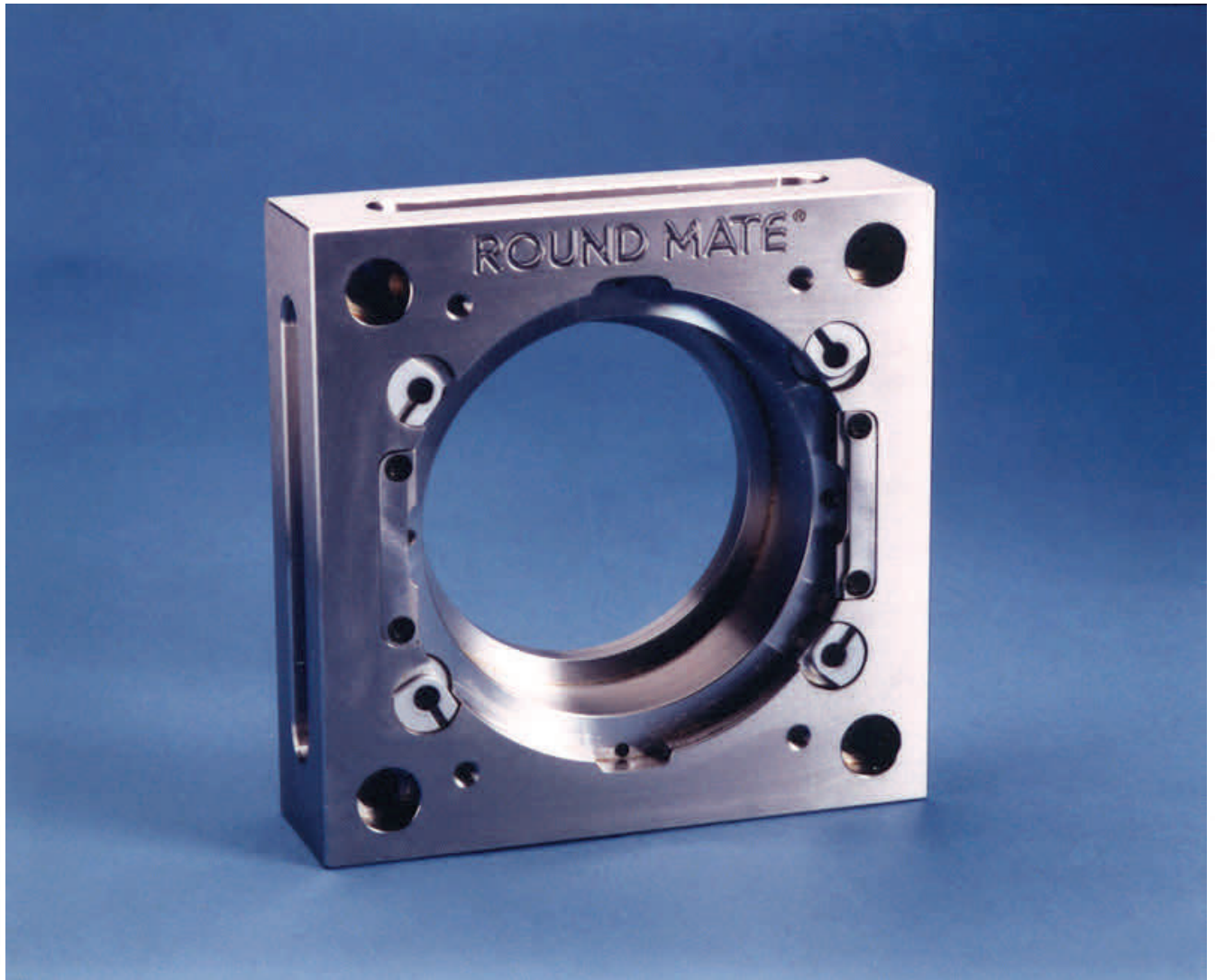


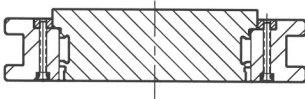
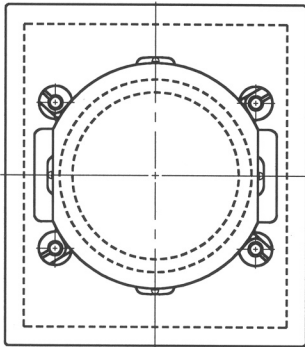
Fixtures and System Components



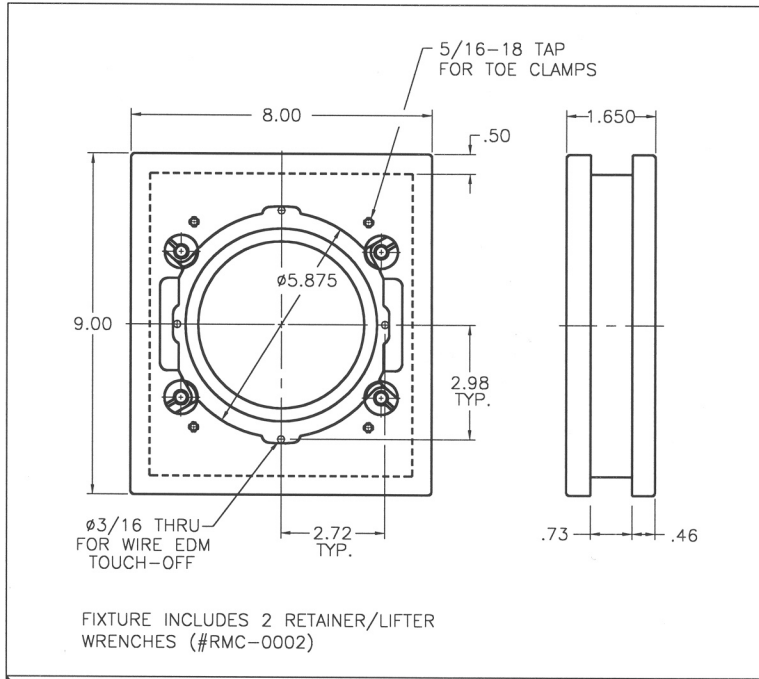
Revision: 2/2012

6" INSERT MACHINING FIXTURE

HEAT-TREATABLE INSERTS WITH GRIND STOCK WILL NOT FIT INTO MACHINING FIXTURE.



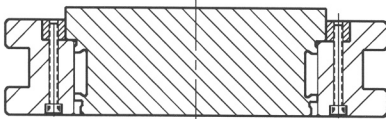
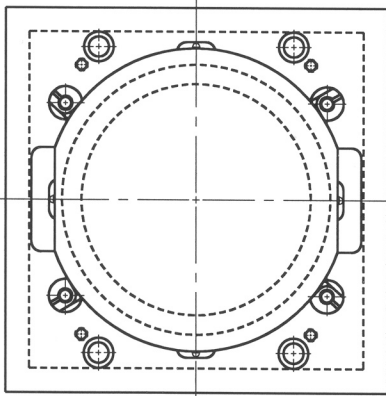
(SHOWN ASSEMBLED WITH INSERT)



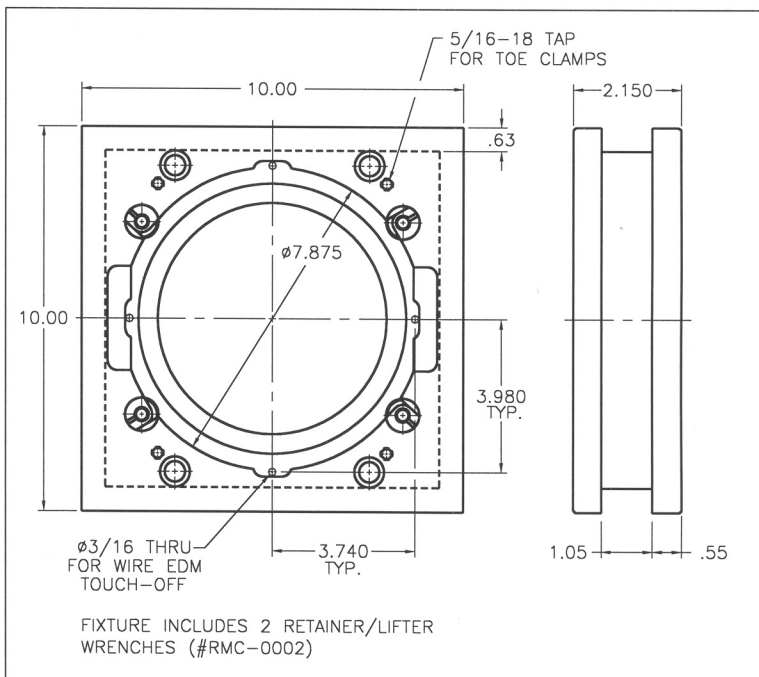
RMT-6100

8" INSERT MACHINING FIXTURE

HEAT-TREATABLE INSERTS WITH GRIND STOCK WILL NOT FIT INTO MACHINING FIXTURE.



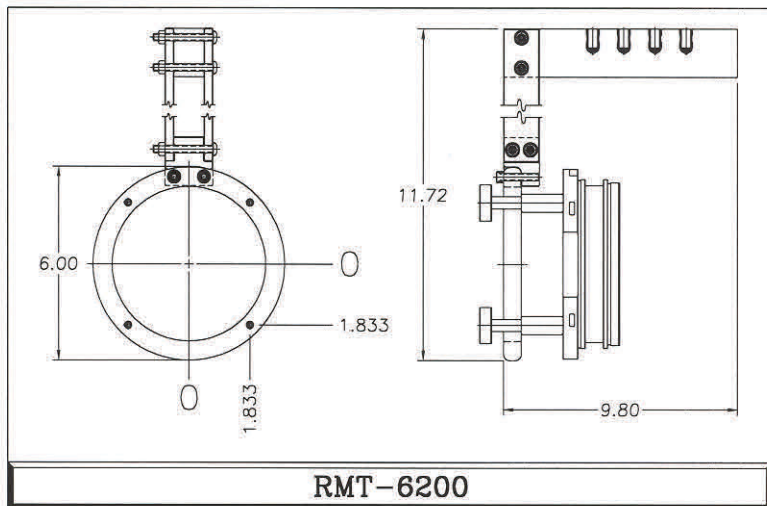
(SHOWN ASSEMBLED WITH INSERT)



RMT-8100

6" INSERT LOADING FIXTURE

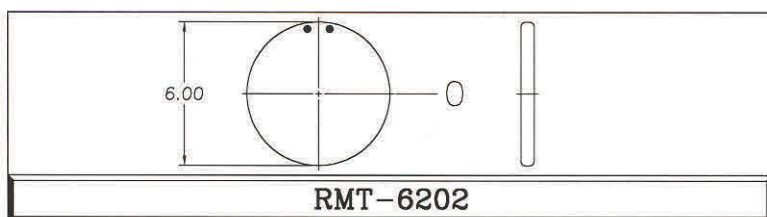
ALLOWS FOR EASY PLACEMENT AND REMOVAL OF COVER AND EJECTOR SIDE 6" ROUND MATE STANDARD INSERTS. COMPLETE SET INCLUDES STANDARD RING, LIFTING ARM AND SCREW FASTENERS.



NOTE:
1/4-20 TAPPED HOLES MUST BE PLACED IN FACE OF INSERT AT GIVEN LOCATIONS.

OPTIONAL 6" BLANK DISC

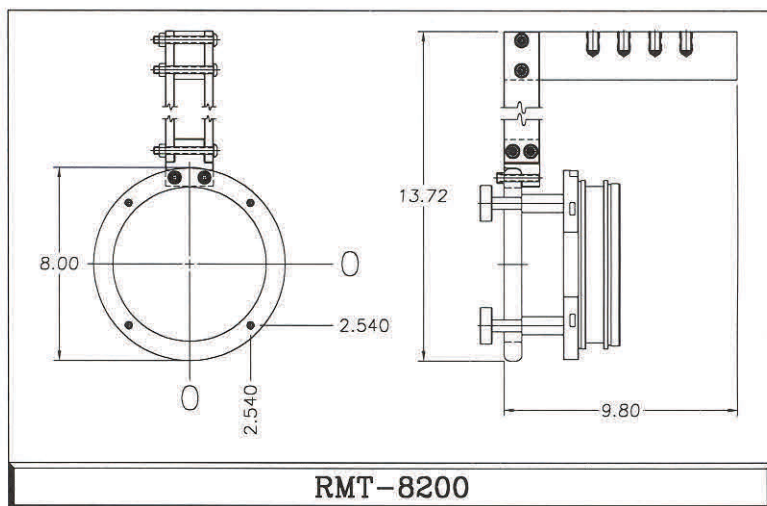
ALLOWS FOR EASY PLACEMENT AND REMOVAL OF COVER AND EJECTOR SIDE 6" ROUND MATE CUSTOM INSERTS.



NOTE:
TAPPED HOLES MAY BE PLACED ANYWHERE TO MATCH FACE OF CUSTOM INSERT.

8" INSERT LOADING FIXTURE

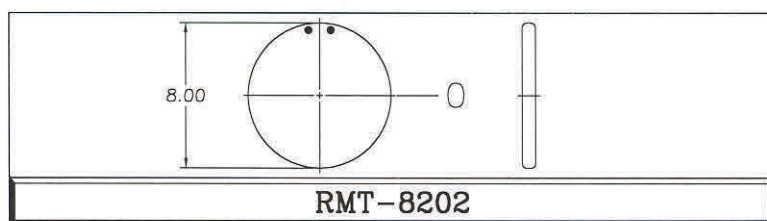
ALLOWS FOR EASY PLACEMENT AND REMOVAL OF COVER AND EJECTOR SIDE 8" ROUND MATE STANDARD INSERTS. COMPLETE SET INCLUDES STANDARD RING, LIFTING ARM AND SCREW FASTENERS.



NOTE:
1/4-20 TAPPED HOLES MUST BE PLACED IN FACE OF INSERT AT GIVEN LOCATIONS.

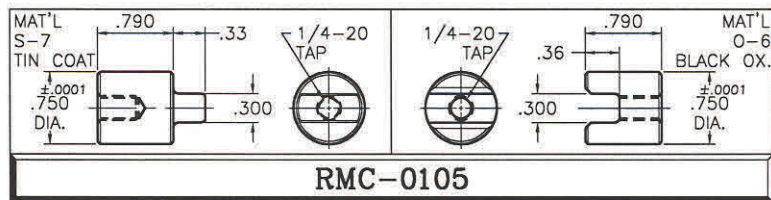
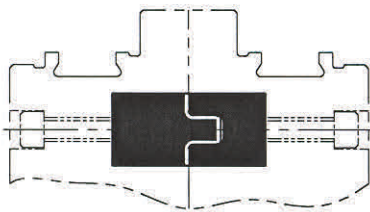
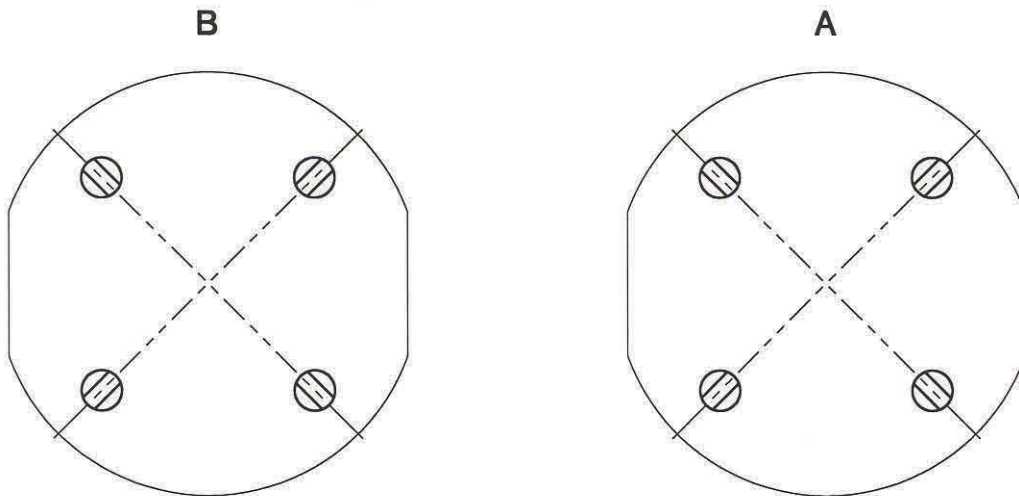
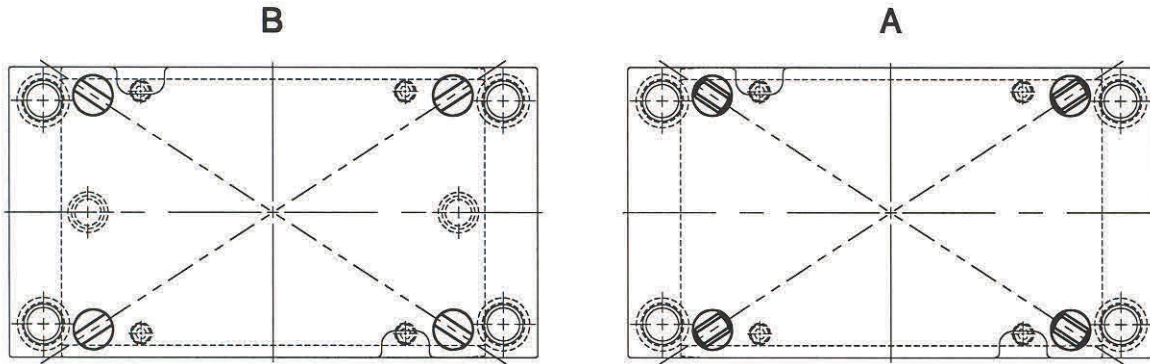
OPTIONAL 8" BLANK DISC

ALLOWS FOR EASY PLACEMENT AND REMOVAL OF COVER AND EJECTOR SIDE 8" ROUND MATE CUSTOM INSERTS.



NOTE:
TAPPED HOLES MAY BE PLACED ANYWHERE TO MATCH FACE OF CUSTOM INSERT.

ROUND INTERLOCKS



INTERLOCK ASSEMBLIES TO BE
 INSTALLED WITH INTERLOCK
 ALIGNED WITH CENTER OF MOLD
 ALLOWING FOR UNIFORM THERMAL
 EXPANSION WHILE STILL MAINTAINING
 DYNAMIC CAVITY INTERLOCKING